

DESCRIPTION

H36LVRTAT is a Non-IC AIR-TITE™ remodel fixture for use with H3 3" series trims. For installation from below the ceiling. Housing is AIR-TITE rated to prevent airflow between heated or air conditioned spaces and unconditioned attic areas. For use with 12V MR16 lamps.

Non-IC Housing is AIR-TITE™ but insulation must be kept 3" away from all sides of housing.

H36LVRTAT is a 3" aperture Non-IC AIR-TITE™ fixture for use with H3 series trims. For installation from below the ceiling. Housing is AIR-TITE rated to prevent airflow between heated or air conditioned spaces and unconditioned attic areas. Housing is rated for up to 50W, 12V MR16 lamps. Non-IC Housing is AIR-TITE™ but insulation must be kept 3" away from all sides of housing.

SPECIFICATION FEATURES

Housing

Formed of 20 gauge CRS with white powder coat finish.

Remodel Plaster Frame

"Easy clip" provided to secure plaster frame in ceiling while installation is being completed. Adjustable cam lock springs provide positive lock of housing to plaster frame to complete housing installation.

Junction Box

- UL Listed for through branch circuit wiring (maximum 4 No.12 ga., 90°C conductors).
- Four 1/2" trade size conduit knockouts with true pry-out slots.
- Three Slide-N-Side™ wire traps allow non-metallic sheathed cable

to be installed without tools and without removing knockouts.

Accepts a wide range of non-metallic sheathed cable.

- Allows wiring connections to be made outside the junction box
- Simply insert the cable directly into the trap after connections are made.

- Three push-in wire connectors are included and eliminate the need for separate wire nuts.

- Accommodates the following standard non-metallic sheathed cable sizes:

(US) #14/2, #14/3, #12/2, #12/3
(Canada) #14/2, #14/3, #12/2

- No-accessible ceiling installation requires nonmetallic "NM" sheathed cable connection.

Catalog #		Type
Project		
Comments		Date
Prepared by		

Socket

GU5.3 socket for 12V MR16 lamps.

Transformer

Integral dual-tap magnetic transformer steps 120V or 277V line voltage down to 12V nominal lamp operating voltage. Housing is rated for up to 50W MR16 lamps. Housing ships as 277V model with 120V transformer wire lead capped. For use in 120V systems, simply cap the 277V wire lead and use 120V lead (refer to wiring diagram)

Labels

- UL/cUL Listed 1598 Luminaire
- UL/cUL Damp Location Listed
- UL/cUL Listed for Feed Through
- Certified Under ASTM-E283 for air tight construction



H36LVRTAT H36LVRTAT277

**3" Non-Insulated Ceiling
AIR-TITE™ Remodel Recessed
Housing
12V MR16**

3" TRIMS

**FOR USE IN NON-
INSULATED
CEILINGS**

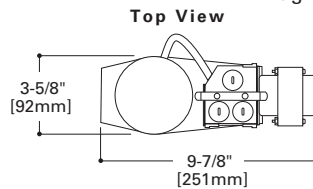
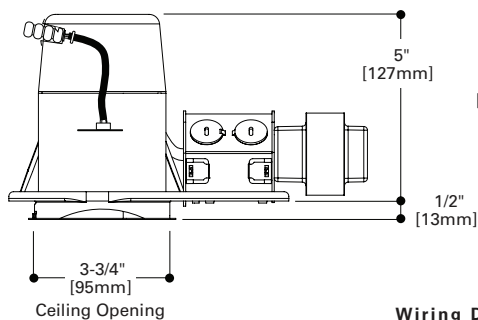
**CAN BE USED IN
INSULATED CEILINGS
BUT INSULATION MUST
BE KEPT 3" FROM ALL
SIDES OF THE HOUSING**



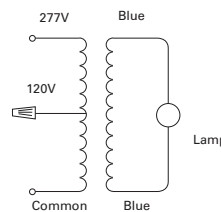
12V MR16

Transformer Data:

Type: Magnetic
Primary: 120 or 277VAC, 60 Hz
(H36LVRTAT277 Primary: 120V or 277V)
Secondary: 11.5 ±0.3V

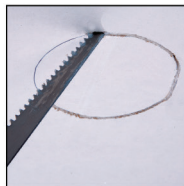


Wiring Diagram



Cut ceiling opening using template provided with fixture.

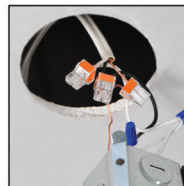
REMODEL HOUSING INSTALLATION



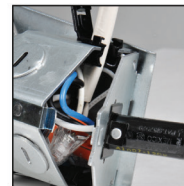
Cut hole in ceiling using template supplied.



Bring power to fixture using non metallic sheathed cable or flexible metal cable.



The Halo Slide-N-Side™ wire traps let you make all wiring connections outside the junction box.



Slide cable into Slide-N-Side™ wire trap and close junction box cover.



Insert plaster frame into ceiling opening.



Support clip keeps plaster frame in place during rest of installation.



Insert housing into position and align slots in housing wall with indicator label on inside of plaster frame opening. Then secure in position with cam locks.



Insert trim to complete installation.

ORDERING INFORMATION

SAMPLE NUMBER: H36LVRTAT-3001WHBB

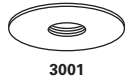
Order housing and trims separately.

Housing

Trims

H36LVTAT=3" AIR-TITE™
 Non-IC Small
 Aperture Low
 Voltage MR16
 Remodel Housing

H36LVRTAT277=3" AIR-TITE™
 Non-IC Small
 Aperture 120/277V
 Low Voltage MR16
 Remodel Housing



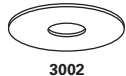
**3001 Adjustable Pinhole Baffle - 15° Tilt
 50W 12V MR16**
 3001WHBB=White with Black Baffle
 3001BKBB=Black with Black Baffle
 3001SNBB=Satin Nickel with Black Baffle
 3001TBZBB=Tuscan Bronze with Black Baffle
 OD: 4-1/4" [108mm]



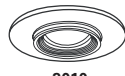
**3009 Adjustable Gimbal- 35° Tilt
 50W 12V MR16**
 3009WHBB=White with Black Baffle
 3009WHWB=White with White Baffle
 3009BKBB=Black with Black Baffle
 3009SNBB=Satin Nickel with Black Baffle
 3009TBZBB=Tuscan Bronze with Black Baffle
 OD: 4-1/4" [108mm]



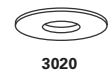
**3017 All-Glass Frost Curve Showerlight -
 Wet Location Listed
 50W 12V MR16**
 3017FGS=All-Glass Frost Curve with Clear
 Glass Center - Showerlight
 OD: 4-1/4" [108mm]



**3002 Adjustable Pinhole Reflector- 15° Tilt
 50W 12V MR16**
 3002WHC=White with Clear Reflector
 OD: 4-1/4" [108mm]



**3010 Super Adjustable- 0 - 80° Adjustment
 50W 12V MR16**
 3010WH=White
 3010SN=Satin Nickel
 3010TBZ=Tuscan Bronze
 OD: 4-1/4" [108mm]



**3020 Wall Wash
 50W 12V MR16**
 3020WW=White Downlight & Wall Wash
 with Integral Kick Reflector
 OD: 4-1/4" [108mm]



**3003 Adjustable Baffle- 35° Tilt
 50W 12V MR16**
 3003WHBB=White with Black Baffle
 3003WHWB=White with White Baffle
 3003BKBB=Black with Black Baffle
 3003SNB=Satin Nickel with Satin Nickel Baffle
 3003TBZ=Tuscan Bronze with Tuscan Bronze Baffle
 OD: 4-1/4" [108mm]



**3011 Square Adjustable - 15° Tilt
 50W 12V MR16**
 3011WHBB=White with Black Baffle
 3011WHWB=White with White Baffle
 3011BKBB=Black with Black Baffle
 3011SNBB=Satin Nickel with Black Baffle
 3011TBZBB=Tuscan Bronze with Black Baffle
 OD: 4-1/4" [108mm]



**3004 Adjustable Reflector- 35° Tilt
 50W 12V MR16**
 3004WHC=White with Clear Reflector
 3004SN=Satin Nickel with Satin Nickel Reflector
 3004TBZ=Tuscan Bronze with Tuscan Bronze Reflector
 3004WHH=White with Haze Reflector
 3004WHW=White with White Reflector
 OD: 4-1/4" [108mm]



**3012 Square Regressed Lens Adjustable
 Showerlight - 15° Tilt
 50W 12V MR16**
 3012WHBB=White with Black Baffle
 3012WHWB=White with White Baffle
 3012BKBB=Black with Black Baffle
 3012SNBB=Satin Nickel with Black Baffle
 3012TBZBB=Tuscan Bronze with Black Baffle
 OD: 4-1/4" [108mm]



**3006 Adjustable Slot Aperture- 35° Tilt
 50W 12V MR16**
 3006WHBB=White with Black Baffle
 3006BKBB=Black with Black Baffle
 3006SNBB=Satin Nickel with Black Baffle
 3006TBZBB=Tuscan Bronze with Black Baffle
 OD: 4-1/4" [108mm]



**3013 Square Adjustable Gimbal - 35° Tilt
 50W 12V MR16**
 3013WH=White
 3013BK=Black
 3013SN=Satin Nickel
 3013TBZ=Tuscan Bronze
 OD: 4-1/4" [108mm]



**3007 Regressed Lens Showerlight- 15° Tilt -
 Wet Location Listed
 50W 12V MR16**
 3007WHC=White with Clear Reflector
 3007PCC=Polished Chrome with Clear Reflector
 3007SN=Satin Nickel with Satin Nickel Reflector
 3007TBZ=Tuscan Bronze with Tuscan Bronze Reflector
 OD: 4-1/4" [108mm]



**3008 Showerlight - Wet Location Listed
 50W 12V MR16**
 3008FG=White Polymer and Glass Lens with
 Frosted Perimeter
 OD: 4-1/4" [108mm]