



MASTER LEDtube InstantFit HF T5



MAS LEDtube HF 1500mm HO 26W 865 T5 OE

The Philips MASTER LEDtube integrates a LED light source into a traditional fluorescent form factor. Its unique design creates a perfectly uniform visual appearance, which cannot be distinguished from traditional fluorescent. These T5 lighting tubes are the right choice for absolute performance and are designed to stand up to everyday conditions. Unparalleled savings thanks to low energy consumption and an exceptionally long lifetime make these T5 LED tubes the choice for every demanding application.

Product data

General Information		LLMF At End Of Nominal Lifetime (Nom)		70 %
Cap-Base	G5	Photobiological safety according to EN 62471		RG0
Nominal lifetime	60,000 hour(s)	Operating and Electrical		
Switching Cycle	50,000	Line Frequency	20K to 140K Hz	
Lighting Technology	LED	Input Frequency	20K to 140K Hz	
Flux measurement reference	Sphere	Power Consumption	26 W	
CE mark	Yes	Lamp Current (Max)	420 mA	
EU RoHS compliant	Yes	Lamp Current (Min)	150 mA	
Light Technical		Starting Time (Nom)	0.5 s	
Color Code	865 [CCT of 6500K]	Warm-up time to 60% light	0.5 s	
Beam Angle (Nom)	200 degree(s)	Power Factor (Fraction)	0.9	
Luminous Flux	3,900 lm	Voltage (Nom)	60-120 V	
Color Designation	Cool Daylight	LED alternative to fluorescent lamp power	49 W	
Correlated Color Temperature (Nom)	6500 K	Inrush current at mains	-	
Luminous Efficacy (rated) (Nom)	150 lm/W	Max. lamp no. on MCB B type 10A - Mains	-	
Color Consistency	<6	Max. lamp no. on MCB B type 10A – EM ballast without Comp. Cap.	-	
Color rendering index (CRI)	80			

MASTER LEDtube InstantFit HF T5

Max. lamp no. on MCB B type 10A – EM ballast with Comp. Cap.	-
Max. lamp no. on MCB B type 16A – Mains	-
Max. lamp no. on MCB B type 16A – EM ballast without Comp. Cap.	-
Max. lamp no. on MCB B type 16A – EM ballast with Comp. Cap.	-
Ballast Compatibility	HF

Temperature

Ambient temperature range	-20 °C to 45 °C
T-Case Maximum (Nom)	50 °C

Controls and Dimming

Dimmable	Yes - Check ballast compatibility
----------	-----------------------------------

Mechanical and Housing

Bulb Finish	Frosted
Bulb Material	Glass
Product Length	1,500 mm
Bulb Shape	T5

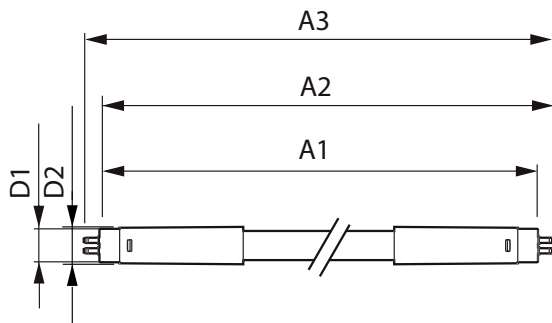
Approval and Application

Energy Efficiency Class	D
Energy Saving Product	Yes
Approval Marks	RoHS compliance TUV CE marking KEMA Keur certificate
Energy Consumption kWh/1000 h	26 kWh
EPREL Registration Number	1384145

Product Data

Order product name	MAS LEDtube HF 1500mm HO 26W 865 T5 OE
Full product name	MAS LEDtube HF 1500mm HO 26W 865 T5 OE
Full product code	871869974961300
Order code	929002352502
Material Nr. (12NC)	929002352502
Numerator - Quantity Per Pack	1
EAN/UPC - Product/Case	8718699749613
Numerator - Packs per outer box	10
EAN/UPC - Case	8718699749620

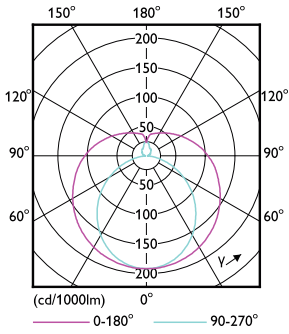
Dimensional drawing



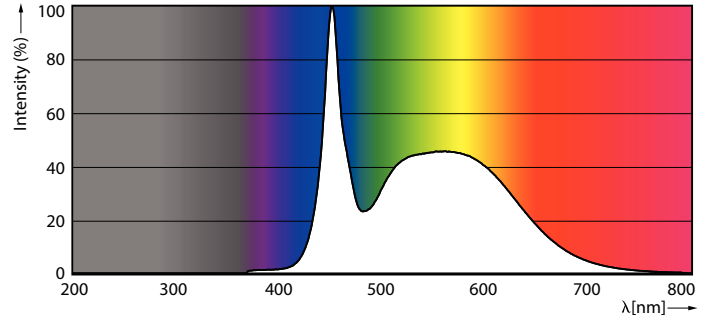
Product	D1	D2	A1	A2	A3
MAS LEDtube HF 1500mm HO 26W 865 T5 OE	15.5 mm	19 mm	1,449 mm	1,456 mm	1,463 mm

MASTER LEDtube InstantFit HF T5

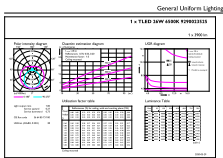
Photometric data



Light Distribution Diagram - MAS LEDtube HF 1500mm HO 26W 865 T5 OE

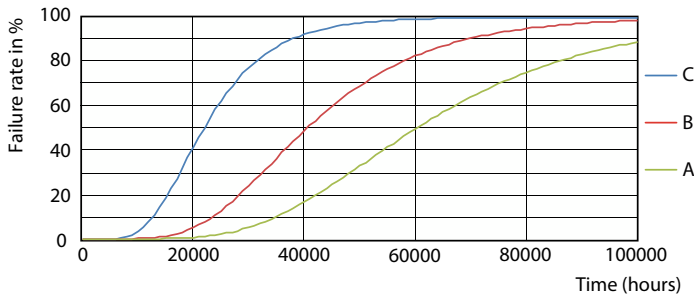


Spectral Power Distribution Colour - MAS LEDtube HF 1500mm HO 26W 865 T5 OE

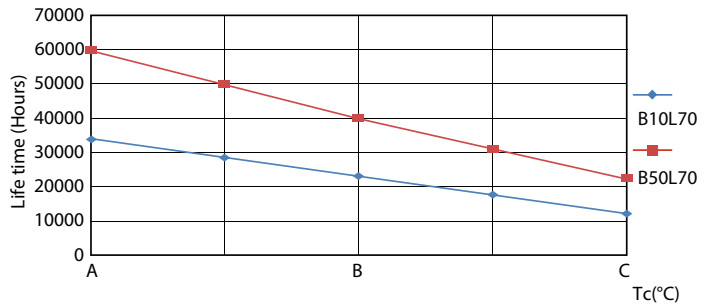


General uniform lighting - MAS LEDtube HF 1500mm HO 26W 865 T5 OE

Lifetime



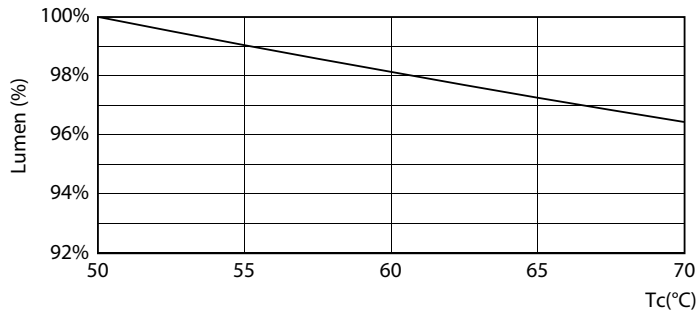
Life Expectancy Diagram - MAS LEDtube HF 1500mm HO 26W 865 T5 OE



Life Expectancy Diagram - MAS LEDtube HF 1500mm HO 26W 865 T5 OE

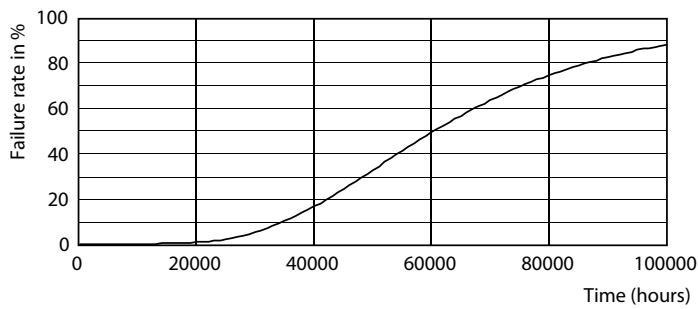
MASTER LEDtube InstantFit HF T5

Lifetime



Lumen Maintenance Diagram - MAS LEDtube HF 1500mm HO 26W 865 T5 OE

Lumen Maintenance Diagram - MAS LEDtube HF 1500mm HO 26W 865 T5 OE



Life Expectancy Diagram - MAS LEDtube HF 1500mm HO 26W 865 T5 OE

