



T5

25T5HO/COR/46-840/MF35/G 25/1

Philips T5 LED tubes offer an affordable, energy saving retrofit solution. The T5 lamps have been engineered to withstand the test of time with a 50,000-hour lifetime and a limited 5-year warranty to back it up. The lighting performance effectively replaces conventional fluorescent T5 HO or T5 HE lamps. Available in either InstantFit (Type A or Type C) or MainsFit (Type B / Ballast bypass), Philips T5 TLEDs provide a variety of options for any application.

Product data

General Information	
Cap-Base	G5 [G5]
Nominal lifetime	50,000 hour(s)
Switching Cycle	50,000
Lighting Technology	LED
EU RoHS compliant	Yes
Light Technical	
Color Code	840 [CCT of 4000K]
Beam Angle (Nom)	200 degree(s)
Luminous Flux	3,500 lm
Color Designation	Cool White (CW)
Correlated Color Temperature (Nom)	4000 K
Luminous Efficacy (rated) (Nom)	140.00 lm/W
Color Consistency	<6
Color rendering index (CRI)	80
LLMF At End Of Nominal Lifetime (Nom)	70 %
Operating and Electrical	
Line Frequency	50 to 60 Hz
Input Frequency	50 to 60 Hz

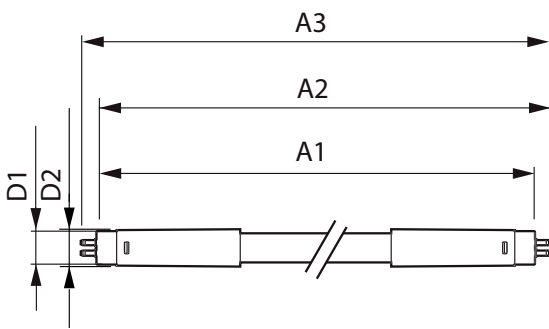
Power Consumption	25 W
Lamp Current (Max)	210 mA
Lamp Current (Min)	95 mA
Wattage Equivalent	54 W
Starting Time (Nom)	0.45 s
Warm-up time to 60% light	0.5 s
Power Factor (Fraction)	0.9
Voltage (Nom)	120-277 V
UL Type	Type B - bypass the ballast
Temperature	
Ambient temperature range	-20 °C to 45 °C
T-Case Maximum (Nom)	75 °C
Controls and Dimming	
Dimmable	No
Mechanical and Housing	
Bulb Finish	Frosted
Bulb Material	Glass
Product Length	1,200 mm

T5

Bulb Shape	T5
Approval and Application	
Energy Saving Product	Yes
Approval Marks	RoHS compliance UL certificate DLC compliance
Energy Consumption kWh/1000 h	- kWh
Product Data	
Order product name	25T5HO/COR/46-840/MF35/G 25/1

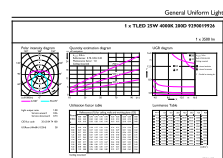
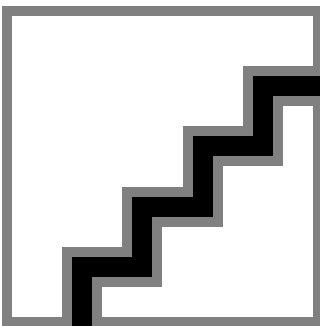
Full product name	25T5HO/COR/46-840/MF35/G 25/1
Order code	929001992604
Material Nr. (12NC)	929001992604
Numerator - Quantity Per Pack	1
EAN/UPC - Product/Case	046677542061
Numerator - Packs per outer box	25
EAN/UPC - Case	50046677542066

Dimensional drawing



Product	D1	D2	A1	A2	A3
25T5HO/COR/46-840/MF35/G 25/1	15.3 mm	18.6 mm	1,147.8 mm	1,154.9 mm	1,162 mm

Photometric data

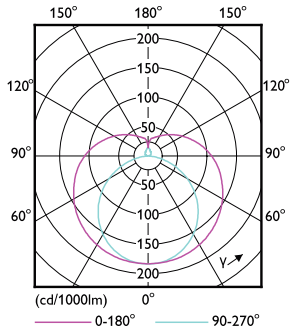


OSRAM Powerline U1 | Philips Lighting BV | Page 10

Spectral Power Distribution Colour - 25T5HO/COR/46-840/MF35/G 25/1

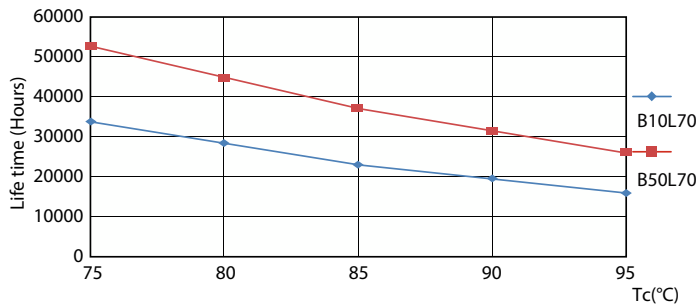
Accent Lighting Spots - 25T5HO/COR/46-840/MF35/G 25/1

Photometric data

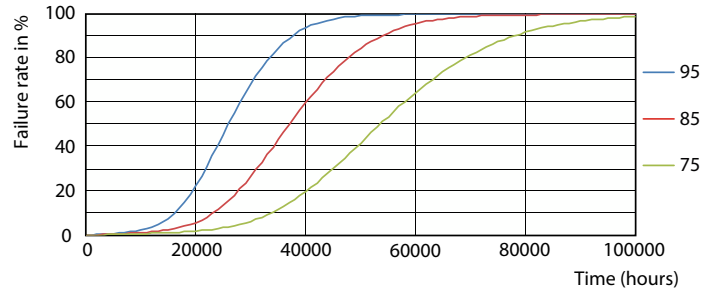


Light Distribution Diagram - 25T5HO/COR/46-840/MF35/G 25/1

Lifetime



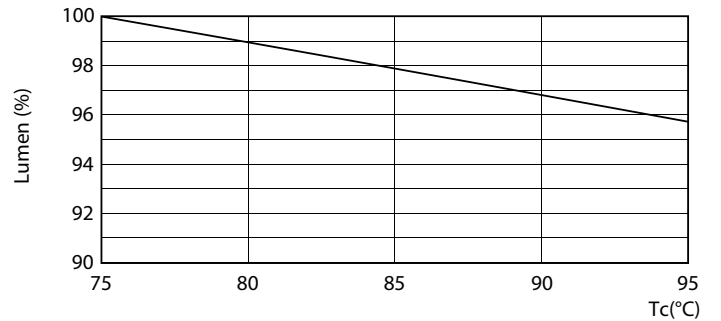
Life Expectancy Diagram - 25T5HO/COR/46-840/MF35/G 25/1



Life Expectancy Diagram - 25T5HO/COR/46-840/MF35/G 25/1



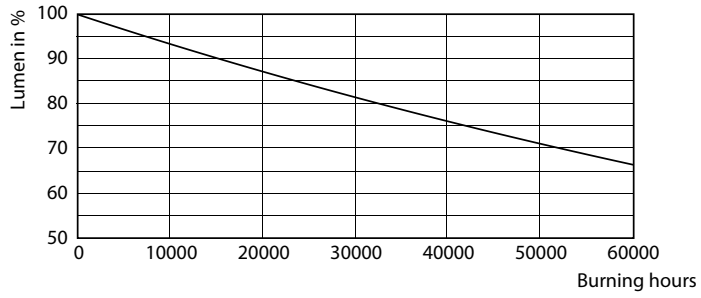
Life Expectancy Diagram - 25T5HO/COR/46-840/MF35/G 25/1



Lumen Maintenance Diagram - 25T5HO/COR/46-840/MF35/G 25/1

T5

Lifetime



Lumen Maintenance Diagram - 25T5HO/COR/46-840/MF35/G 25/1

