



# T5

## 25T5HO/COR/46-835/MF33/G 25/1

Philips T5 LED tubes offer an affordable, energy saving retrofit solution. The T5 lamps have been engineered to withstand the test of time with a 50,000-hour lifetime and a limited 5-year warranty to back it up. The lighting performance effectively replaces conventional fluorescent T5 HO or T5 HE lamps. Available in either InstantFit (Type A or Type C) or MainsFit (Type B / Ballast bypass), Philips T5 TLEDs provide a variety of options for any application.

### Product data

General Information	
Cap-Base	G5 [G5]
Nominal lifetime	50,000 hour(s)
Switching Cycle	50,000
Lighting Technology	LED
EU RoHS compliant	Yes
Light Technical	
Color Code	835 [CCT of 3500K]
Beam Angle (Nom)	200 degree(s)
Luminous Flux	3,300 lm
Color Designation	White (WH)
Correlated Color Temperature (Nom)	3500 K
Luminous Efficacy (rated) (Nom)	132.00 lm/W
Color Consistency	<6
Color rendering index (CRI)	80
LLMF At End Of Nominal Lifetime (Nom)	70 %
Operating and Electrical	
Line Frequency	50 to 60 Hz
Input Frequency	50 to 60 Hz

Power Consumption	25 W
Lamp Current (Max)	210 mA
Lamp Current (Min)	95 mA
Wattage Equivalent	54 W
Starting Time (Nom)	0.45 s
Warm-up time to 60% light	0.5 s
Power Factor (Fraction)	0.9
Voltage (Nom)	120-277 V
UL Type	Type B - bypass the ballast
Temperature	
Ambient temperature range	-20 °C to 45 °C
T-Case Maximum (Nom)	75 °C
Controls and Dimming	
Dimmable	No
Mechanical and Housing	
Bulb Finish	Frosted
Bulb Material	Glass
Product Length	1,200 mm

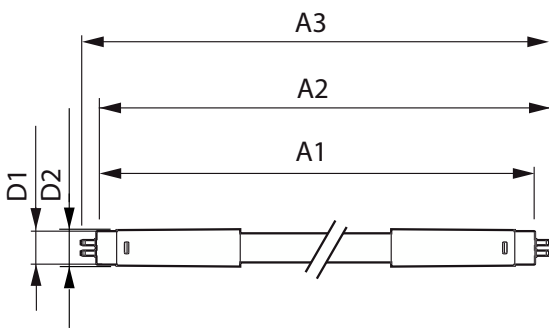
# T5

<b>Bulb Shape</b>	Tube, double-ended
<b>Approval and Application</b>	
<b>Energy Saving Product</b>	Yes
<b>Approval Marks</b>	RoHS compliance UL certificate DLC compliance
<b>Energy Consumption kWh/1000 h</b>	- kWh

<b>Product Data</b>	
<b>Order product name</b>	25T5HO/COR/46-835/MF33/G 25/1

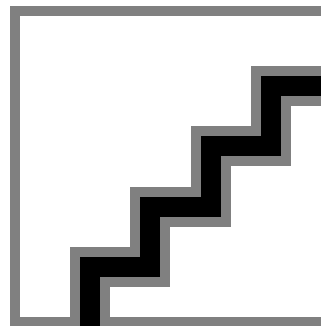
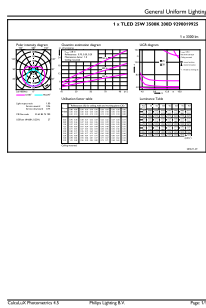
<b>Full product name</b>	25T5HO/COR/46-835/MF33/G 25/1
<b>Order code</b>	929001992504
<b>Material Nr. (12NC)</b>	929001992504
<b>Numerator - Quantity Per Pack</b>	1
<b>EAN/UPC - Product/Case</b>	046677542054
<b>Numerator - Packs per outer box</b>	25
<b>EAN/UPC - Case</b>	50046677542059

## Dimensional drawing



Product	D1	D2	A1	A2	A3
25T5HO/COR/46-835/MF33/G 25/1	15.3 mm	18.6 mm	1,147.8 mm	1,154.9 mm	1,162 mm

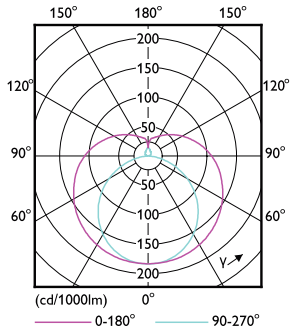
## Photometric data



Accent Lighting Spots - 25T5HO/COR/46-835/MF33/G 25/1

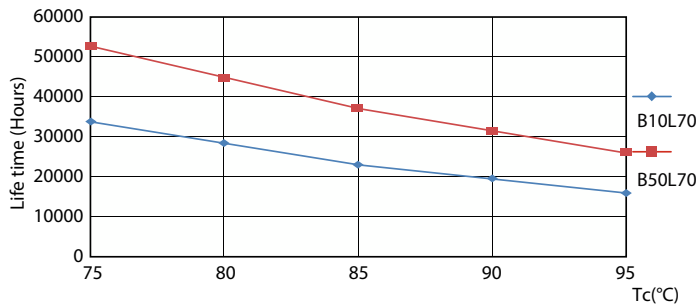
Spectral Power Distribution Colour - 25T5HO/COR/46-835/MF33/G 25/1

Photometric data

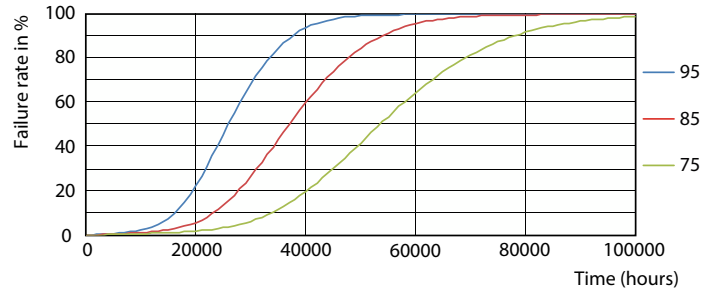


Light Distribution Diagram - 25T5HO/COR/46-835/MF33/G 25/1

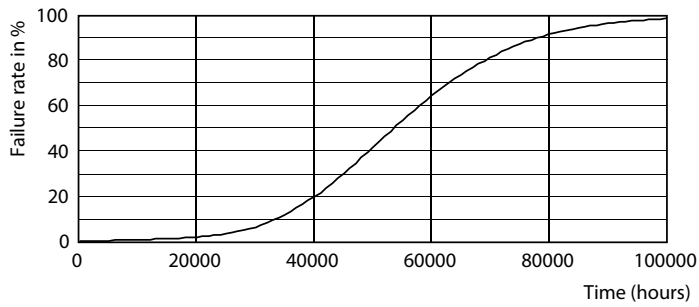
Lifetime



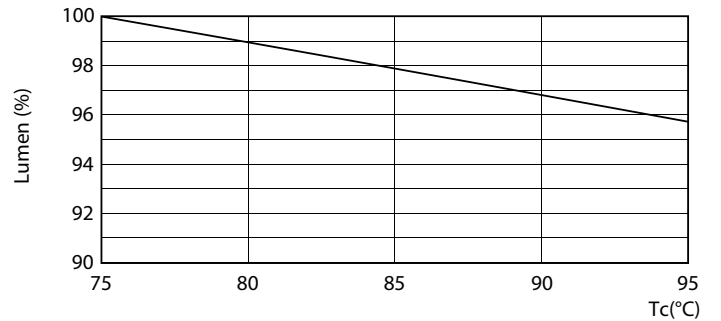
Life Expectancy Diagram - 25T5HO/COR/46-835/MF33/G 25/1



Life Expectancy Diagram - 25T5HO/COR/46-835/MF33/G 25/1



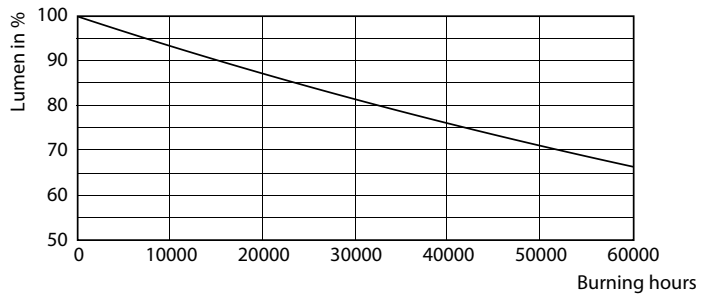
Life Expectancy Diagram - 25T5HO/COR/46-835/MF33/G 25/1



Lumen Maintenance Diagram - 25T5HO/COR/46-835/MF33/G 25/1

# T5

## Lifetime



Lumen Maintenance Diagram - 25T5HO/COR/46-835/MF33/G 25/1

