



T5

25T5HO/COR/46-835/MF33/G 25/1

Philips T5 LED tubes offer an affordable, energy saving retrofit solution. The T5 lamps have been engineered to withstand the test of time with a 50,000-hour lifetime and a limited 5-year warranty to back it up. The lighting performance effectively replaces conventional fluorescent T5 HO or T5 HE lamps. Available in either InstantFit (Type A or Type C) or MainsFit (Type B / Ballast bypass), Philips T5 TLEDs provide a variety of options for any application.

Product data

General Information		Power Consumption	
Cap-Base	G5 [G5]	Power Consumption	25 W
Nominal lifetime	50,000 hour(s)	Lamp Current (Max)	210 mA
Switching Cycle	50,000	Lamp Current (Min)	95 mA
Lighting Technology	LED	Wattage Equivalent	54 W
EU RoHS compliant	Yes	Starting Time (Nom)	0.45 s
		Warm-up time to 60% light	0.5 s
		Power Factor (Fraction)	0.9
Light Technical		Voltage (Nom)	120-277 V
Color Code	835 [CCT of 3500K]	UL Type	Type B - bypass the ballast
Beam Angle (Nom)	200 degree(s)		
Luminous Flux	3,300 lm	Temperature	
Color Designation	White (WH)	Ambient temperature range	-4 °F to 113 °F
Correlated Color Temperature (Nom)	3500 K	T-Case Maximum (Nom)	167 °F
Luminous Efficacy (rated) (Nom)	132.00 lm/W		
Color Consistency	<6	Controls and Dimming	
Color rendering index (CRI)	80	Dimmable	No
LLMF At End Of Nominal Lifetime (Nom)	70 %		
Operating and Electrical		Mechanical and Housing	
Line Frequency	50 to 60 Hz	Bulb Finish	Frosted
Input Frequency	50 to 60 Hz	Bulb Material	Glass
		Product Length	47-1/4 inch

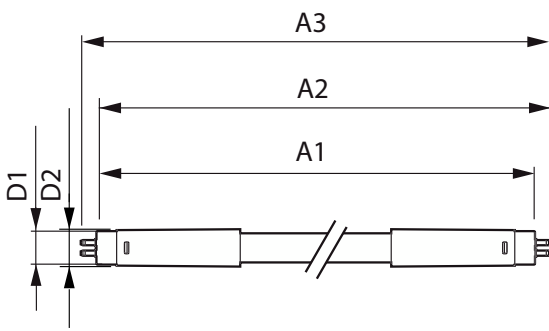
T5

Bulb Shape	Tube, double-ended
Approval and Application	
Energy Saving Product	Yes
Approval Marks	RoHS compliance UL certificate DLC compliance
Energy Consumption kWh/1000 h	- kWh

Product Data	
Order product name	25T5HO/COR/46-835/MF33/G 25/1

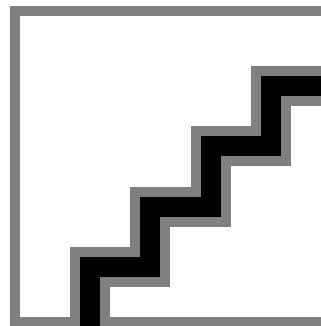
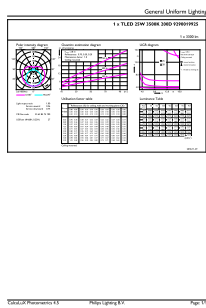
Full product name	25T5HO/COR/46-835/MF33/G 25/1
Order code	542050
Material Nr. (12NC)	929001992504
Numerator - Quantity Per Pack	1
EAN/UPC - Product/Case	046677542054
Numerator - Packs per outer box	25
EAN/UPC - Case	50046677542059

Dimensional drawing



Product	D1	D2	A1	A2	A3
25T5HO/COR/46-835/MF33/G 25/1	5/8 inch	3/4 inch	45-3/16 inch	45-1/2 inch	45-3/4 inch

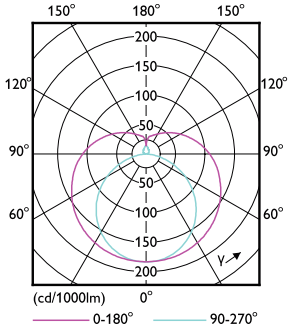
Photometric data



Accent Lighting Spots - 25T5HO/COR/46-835/MF33/G 25/1

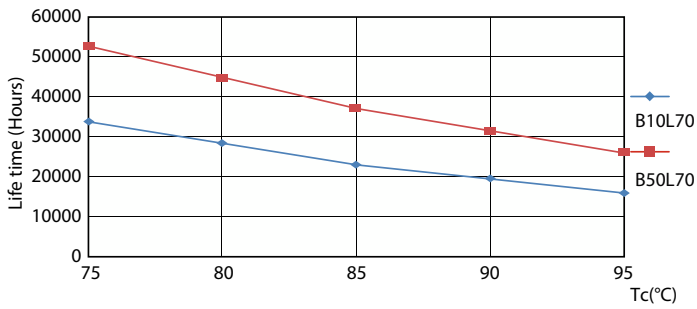
Spectral Power Distribution Colour - 25T5HO/COR/46-835/MF33/G 25/1

Photometric data

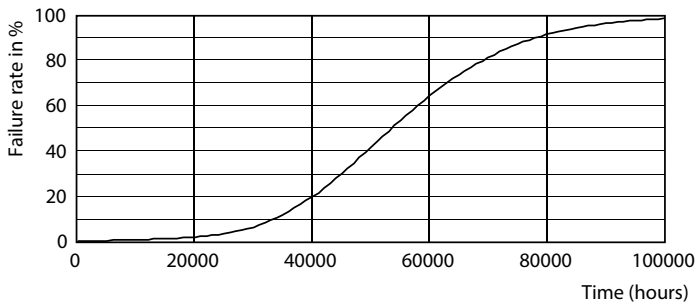


Light Distribution Diagram - 25T5HO/COR/46-835/MF33/G 25/1

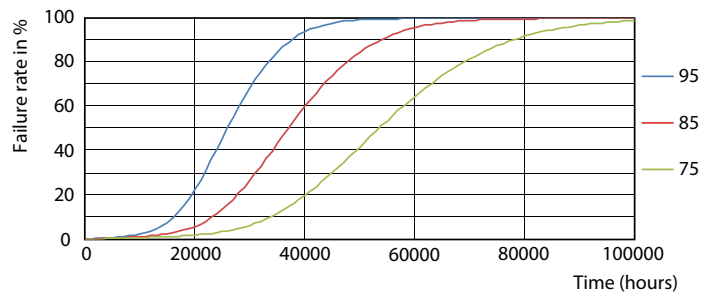
Lifetime



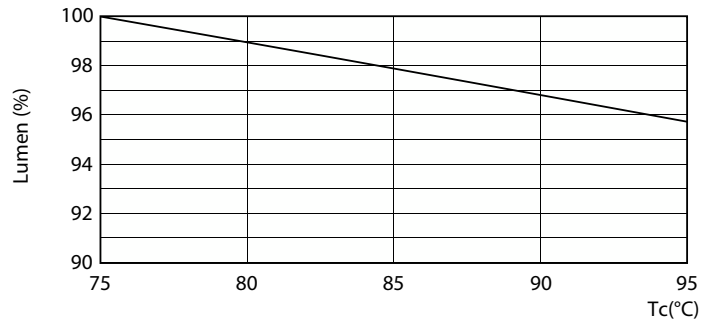
Life Expectancy Diagram - 25T5HO/COR/46-835/MF33/G 25/1



Life Expectancy Diagram - 25T5HO/COR/46-835/MF33/G 25/1



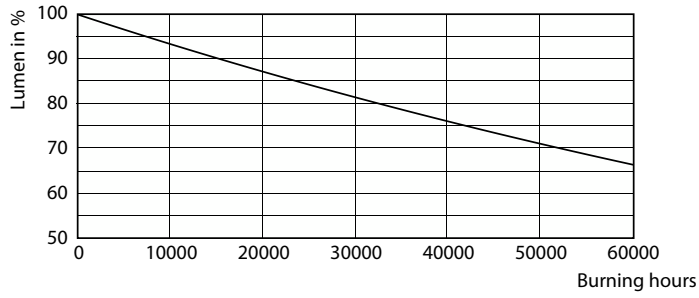
Life Expectancy Diagram - 25T5HO/COR/46-835/MF33/G 25/1



Lumen Maintenance Diagram - 25T5HO/COR/46-835/MF33/G 25/1

T5

Lifetime



Lumen Maintenance Diagram - 25T5HO/COR/46-835/MF33/G 25/1

