



CorePro MainsFit (UL Type-B) T8

15.5T8-6U/COR/24-835/MF20/G 10/1

The CorePro MainsFit (UL Type B) lamps are designed to be the perfect retrofit solution to move from traditional fluorescent lamps to energy saving LEDs. This ballast bypass lamp has everything needed built into the lamp with proven energy savings, long life (up to 50k hours), surge suppression and industry leading safety features. All lamps in the CorePro MainsFit family are double-ended to help simplify the installation. In addition, all lamps meet the Philips standards for light quality so that end users will be in a comfortable environment regardless of the CorePro MainsFit lamp type.

Product data

| General Information | |
|---------------------|----------------|
| Cap-Base | 2G13 |
| Nominal lifetime | 50,000 hour(s) |
| Switching Cycle | 50,000 |
| Lighting Technology | LED |
| EU RoHS compliant | Yes |

| Light Technical | |
|------------------------------------|--------------------|
| Color Code | 835 [CCT of 3500K] |
| Beam Angle (Nom) | 180 degree(s) |
| Luminous Flux | 2,000 lm |
| Color Designation | White (WH) |
| Correlated Color Temperature (Nom) | 3500 K |
| Luminous Efficacy (rated) (Nom) | 129.00 lm/W |
| Color Consistency | <6 |
| Color rendering index (CRI) | 82 |

| LLMF At End Of Nominal Lifetime (Nom) 70 % | |
|--|--|
|--|--|

| Operating and Electrical | |
|---------------------------|-------------|
| Line Frequency | 50 to 60 Hz |
| Input Frequency | 50 to 60 Hz |
| Power Consumption | 15.5 W |
| Lamp Current (Max) | 140 mA |
| Lamp Current (Min) | 63 mA |
| Wattage Equivalent | 32 W |
| Starting Time (Nom) | 0.9 s |
| Warm-up time to 60% light | 0.9 s |
| Power Factor (Fraction) | 0.9 |
| Voltage (Nom) | 120-277 V |
| UL Type | UL Type B |

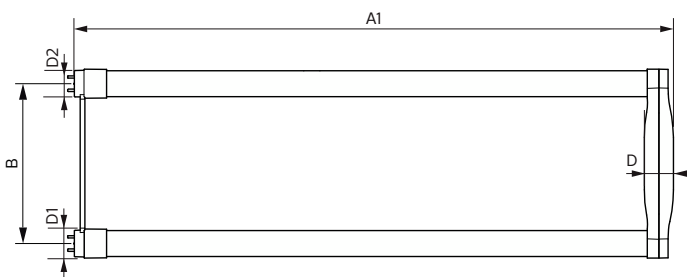
| Temperature | |
|---------------------------|-----------------|
| Ambient temperature range | -20 °C to 45 °C |

CorePro MainsFit (UL Type-B) T8

| | |
|---------------------------------|---|
| T-Case Maximum (Nom) | 51 °C |
| Controls and Dimming | |
| Dimmable | No |
| Mechanical and Housing | |
| Bulb Finish | Frosted |
| Bulb Material | Glass |
| Product Length | 600 mm |
| Bulb Shape | T8 |
| Approval and Application | |
| Energy Saving Product | Yes |
| Approval Marks | UL certificate RoHS compliance DLC compliance |
| Energy Consumption kWh/1000 h | - kWh |

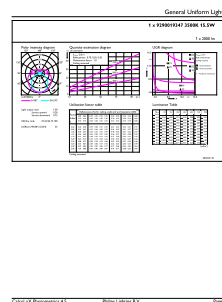
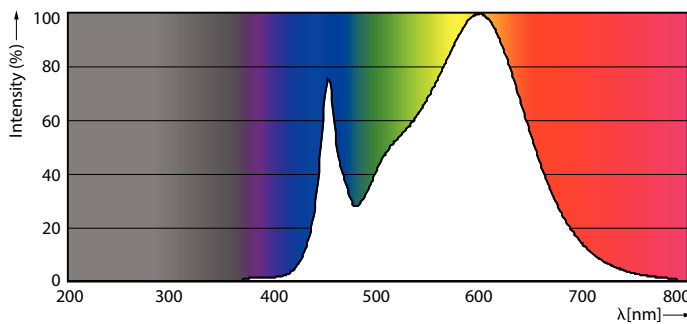
| | |
|-------------------------------------|----------------------------------|
| Energy Certifications | DLC Standard |
| Application Conditions | |
| can it be used in closed luminaires | Yes |
| Product Data | |
| Order product name | 15.5T8-6U/COR/24-835/MF20/G 10/1 |
| Full product name | 15.5T8-6U/COR/24-835/MF20/G 10/1 |
| Order code | 929001934704 |
| Material Nr. (12NC) | 929001934704 |
| Numerator - Quantity Per Pack | 1 |
| EAN/UPC - Product/Case | 046677535544 |
| Numerator - Packs per outer box | 10 |
| EAN/UPC - Case | 50046677535549 |

Dimensional drawing



| Product | D1 | D2 | B | A1 | D |
|----------------------------------|---------|---------|--------|--------|---------|
| 15.5T8-6U/COR/24-835/MF20/G 10/1 | 25.7 mm | 28.1 mm | 152 mm | 570 mm | 27.9 mm |

Photometric data

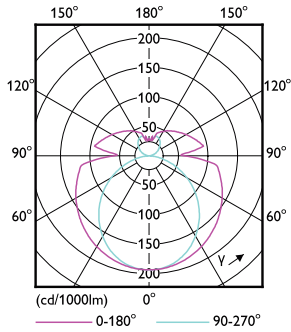


Spectral Power Distribution Colour - 15.5T8-6U/COR/24-835/MF20/G 10/1

General uniform lighting - 15.5T8-6U/COR/24-835/MF20/G 10/1

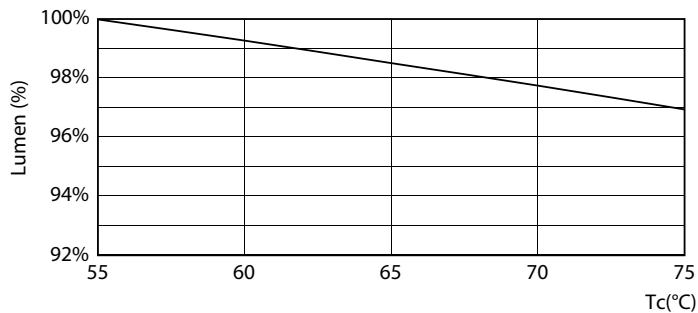
CorePro MainsFit (UL Type-B) T8

Photometric data

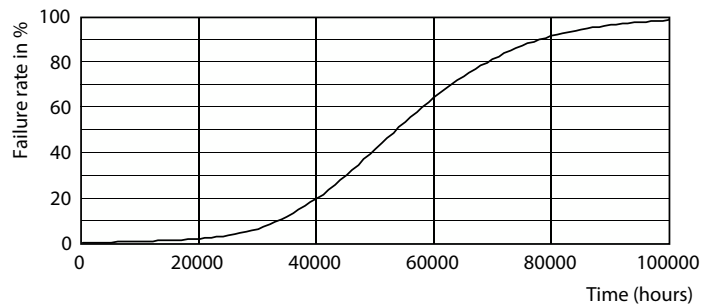


Light Distribution Diagram - 15.5T8-6U/COR/24-835/MF20/G 10/1

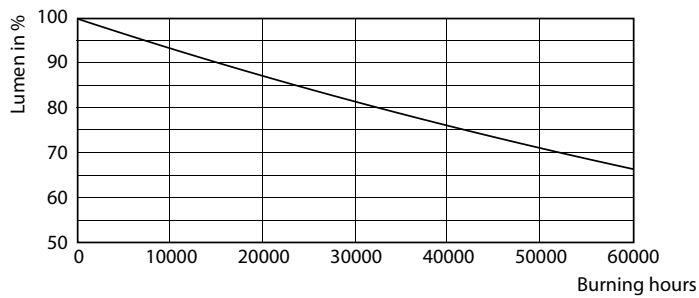
Lifetime



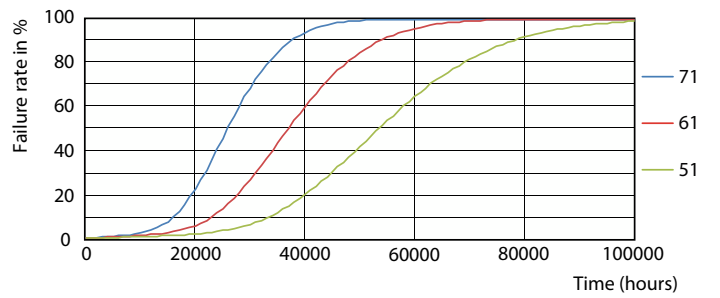
Lumen Maintenance Diagram - 15.5T8-6U/COR/24-835/MF20/G 10/1



Life Expectancy Diagram - 15.5T8-6U/COR/24-835/MF20/G 10/1



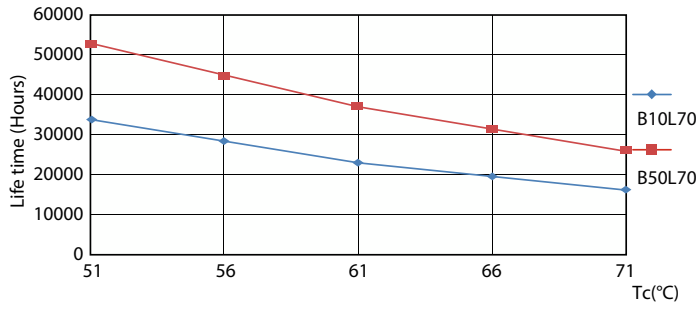
Lumen Maintenance Diagram - 15.5T8-6U/COR/24-835/MF20/G 10/1



Life Expectancy Diagram - 15.5T8-6U/COR/24-835/MF20/G 10/1

CorePro MainsFit (UL Type-B) T8

Lifetime



Life Expectancy Diagram - 15.5T8-6U/COR/24-835/MF20/G 10/1

