



CorePro MainsFit (UL Type-B) T8

15.5T8-6U/COR/24-830/MF20/G 10/1

The CorePro MainsFit (UL Type B) lamps are designed to be the perfect retrofit solution to move from traditional fluorescent lamps to energy saving LEDs. This ballast bypass lamp has everything needed built into the lamp with proven energy savings, long life (up to 50k hours), surge suppression and industry leading safety features. All lamps in the CorePro MainsFit family are double-ended to help simplify the installation. In addition, all lamps meet the Philips standards for light quality so that end users will be in a comfortable environment regardless of the CorePro MainsFit lamp type.

Product data

General Information	
Cap-Base	2G13
Nominal lifetime	50,000 hour(s)
Switching Cycle	50,000
Lighting Technology	LED
EU RoHS compliant	Yes

Light Technical	
Color Code	830 [CCT of 3000K]
Beam Angle (Nom)	180 degree(s)
Luminous Flux	2,000 lm
Color Designation	White (WH)
Correlated Color Temperature (Nom)	3000 K
Luminous Efficacy (rated) (Nom)	129.00 lm/W
Color Consistency	<6
Color rendering index (CRI)	82

LLMF At End Of Nominal Lifetime (Nom) 70 %	
--	--

Operating and Electrical	
Line Frequency	50 to 60 Hz
Input Frequency	50 to 60 Hz
Power Consumption	15.5 W
Lamp Current (Max)	140 mA
Lamp Current (Min)	63 mA
Wattage Equivalent	32 W
Starting Time (Nom)	0.9 s
Warm-up time to 60% light	0.9 s
Power Factor (Fraction)	0.9
Voltage (Nom)	120-277 V
UL Type	UL Type B

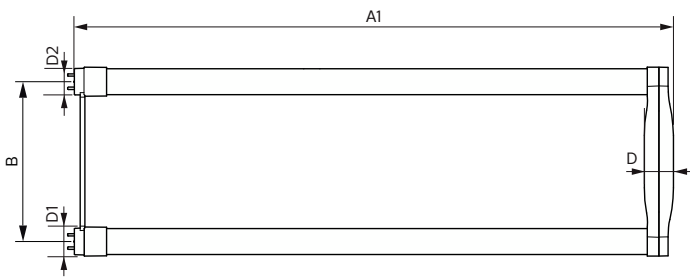
Temperature	
Ambient temperature range	-20 °C to 45 °C

CorePro MainsFit (UL Type-B) T8

T-Case Maximum (Nom)	51 °C
Controls and Dimming	
Dimmable	No
Mechanical and Housing	
Bulb Finish	Frosted
Bulb Material	Glass
Product Length	600 mm
Bulb Shape	T8
Approval and Application	
Energy Saving Product	Yes
Approval Marks	UL certificate RoHS compliance DLC compliance
Energy Consumption kWh/1000 h	- kWh

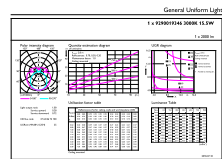
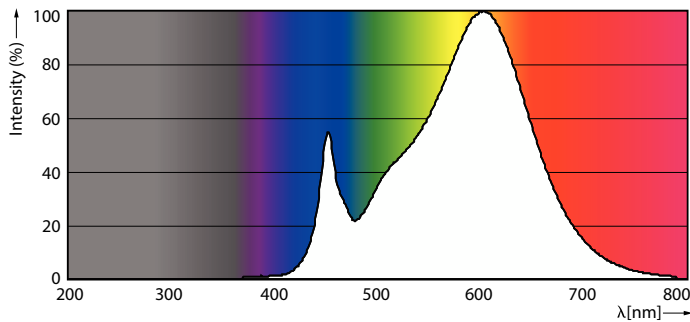
Energy Certifications	DLC Standard
Application Conditions	
can it be used in closed luminaires	Yes
Product Data	
Order product name	15.5T8-6U/COR/24-830/MF20/G 10/1
Full product name	15.5T8-6U/COR/24-830/MF20/G 10/1
Order code	929001934604
Material Nr. (12NC)	929001934604
Numerator - Quantity Per Pack	1
EAN/UPC - Product/Case	046677535537
Numerator - Packs per outer box	10
EAN/UPC - Case	50046677535532

Dimensional drawing



Product	D1	D2	B	A1	D
15.5T8-6U/COR/24-830/MF20/G 10/1	25.7 mm	28.1 mm	152 mm	570 mm	27.9 mm

Photometric data

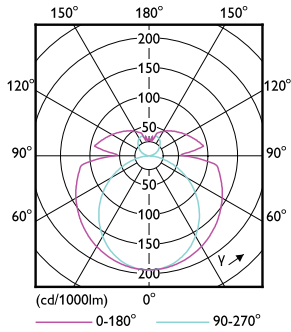


Spectral Power Distribution Colour - 15.5T8-6U/COR/24-830/MF20/G 10/1

General uniform lighting - 15.5T8-6U/COR/24-830/MF20/G 10/1

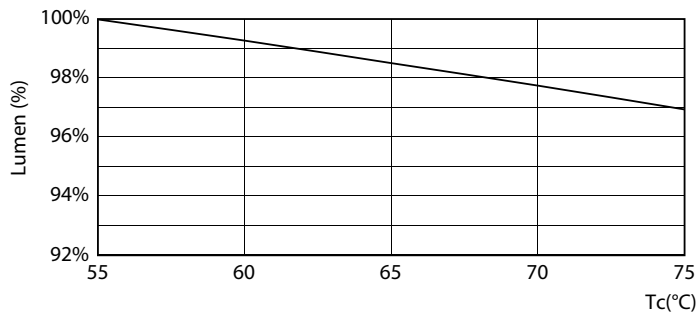
CorePro MainsFit (UL Type-B) T8

Photometric data

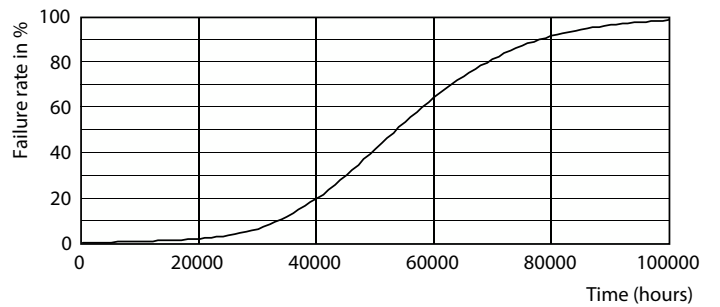


Light Distribution Diagram - 15.5T8-6U/COR/24-830/MF20/G 10/1

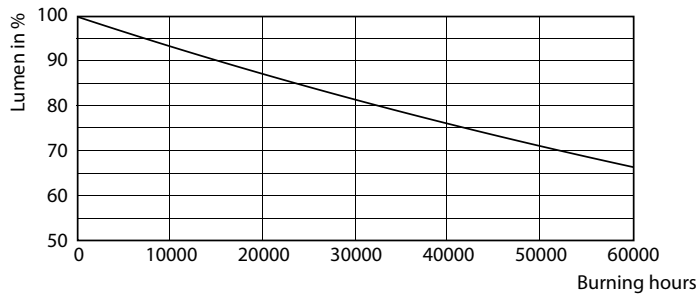
Lifetime



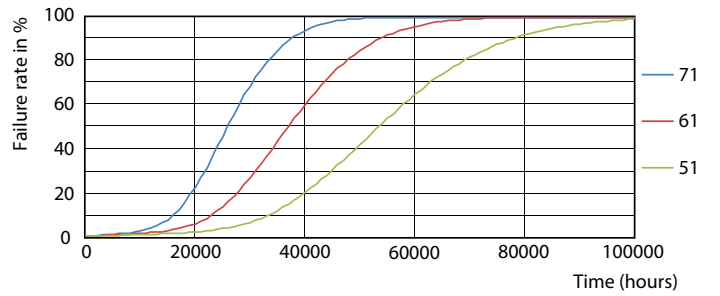
Lumen Maintenance Diagram - 15.5T8-6U/COR/24-830/MF20/G 10/1



Life Expectancy Diagram - 15.5T8-6U/COR/24-830/MF20/G 10/1



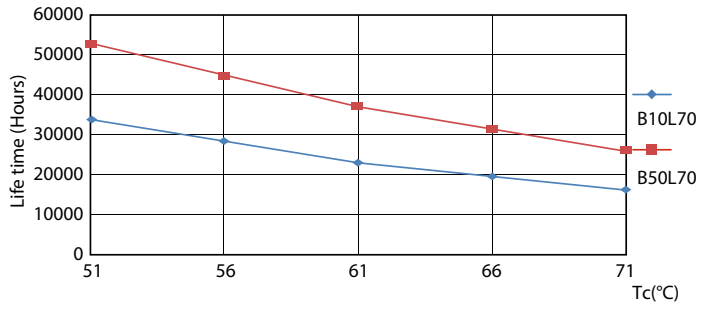
Lumen Maintenance Diagram - 15.5T8-6U/COR/24-830/MF20/G 10/1



Life Expectancy Diagram - 15.5T8-6U/COR/24-830/MF20/G 10/1

CorePro MainsFit (UL Type-B) T8

Lifetime



Life Expectancy Diagram - 15.5T8-6U/COR/24-830/MF20/G 10/1

