



# CorePro LED PLL



## CorePro LED PLL HF 24W 840 4P 2G11

Philips CorePro LED PLL is the ideal uplamping solution for downlights & luminaires in a wide range of general lighting applications. It integrates a LED light source into a traditional fluorescent form factor to offer superb energy savings over a lifetime that's twice as long as fluorescent alternatives.

### Product data

General Information	
Cap-Base	2G11
Nominal lifetime	30,000 hour(s)
Switching Cycle	50,000
Lighting Technology	LED
Flux measurement reference	Sphere
CE mark	Yes
EU RoHS compliant	Yes

Light Technical	
Color Code	840 [CCT of 4000K]
Beam Angle (Nom)	160 degree(s)
Luminous Flux	3,400 lm
Color Designation	Cool White (CW)
Correlated Color Temperature (Nom)	4000 K
Luminous Efficacy (rated) (Nom)	141.00 lm/W
Color Consistency	<6
Color rendering index (CRI)	83
LLMF At End Of Nominal Lifetime (Nom)	70 %
Photobiological safety according to EN 62471	RGO

Operating and Electrical	
Line Frequency	20000-70000 Hz

Input Frequency	20000-70000 Hz
Power Consumption	24 W
Lamp Current (Max)	600 mA
Lamp Current (Min)	400 mA
Starting Time (Nom)	0.5 s
Warm-up time to 60% light	0.5 s
Power Factor (Fraction)	0.9
Voltage (Nom)	53-77 V
LED alternative to fluorescent lamp power	55 W
Inrush current at mains	-
Max. lamp no. on MCB B type 10A - Mains	-
Max. lamp no. on MCB B type 10A – EM ballast without Comp. Cap.	-
Max. lamp no. on MCB B type 10A – EM ballast with Comp. Cap.	-
Max. lamp no. on MCB B type 16A - Mains	-
Max. lamp no. on MCB B type 16A – EM ballast without Comp. Cap.	-
Max. lamp no. on MCB B type 16A – EM ballast with Comp. Cap.	-
Ballast Compatibility	HF

# CorePro LED PLL

## Temperature

Ambient temperature range	-20 °C to 45 °C
T-Case Maximum (Nom)	70 °C

## Controls and Dimming

Dimmable	No
----------	----

## Mechanical and Housing

Product Length	540 mm
Bulb Shape	PL-L

## Approval and Application

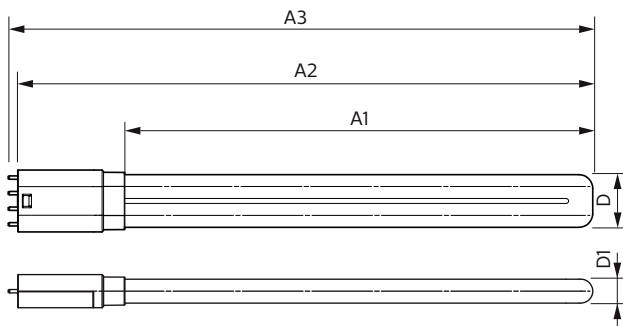
Energy Efficiency Class	E
Energy Saving Product	Yes
Approval Marks	TUV CE marking RoHS compliance KEMA Keur certificate
Energy Consumption kWh/1000 h	24 kWh

EPREL Registration Number	387356
---------------------------	--------

## Product Data

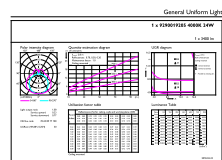
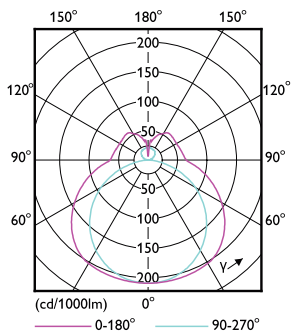
Order product name	CorePro LED PLL HF 24W 840 4P 2G11
Full product name	CorePro LED PLL HF 24W 840 4P 2G11
Full product code	871869682841000
Order code	929001920502
Material Nr. (12NC)	929001920502
Numerator - Quantity Per Pack	1
EAN/UPC - Product/Case	8718696828410
Numerator - Packs per outer box	10
EAN/UPC - Case	8718696828427

## Dimensional drawing



Product	D	D1	A1	A2	A3
CorePro LED PLL HF 24W 840 4P 2G11	37.6 mm	17 mm	453 mm	528.5 mm	535.1 mm

## Photometric data

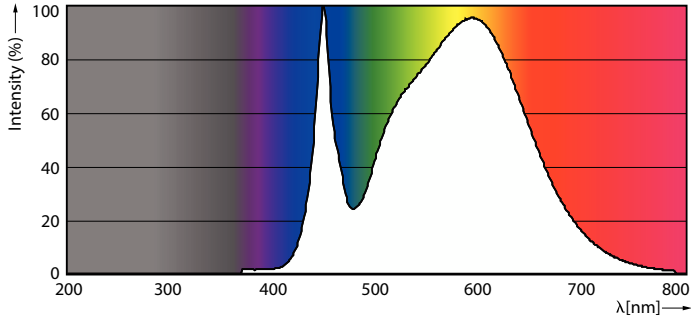


Light Distribution Diagram - CorePro LED PLL HF 24W 840 4P 2G11

General uniform lighting - CorePro LED PLL HF 24W 840 4P 2G11

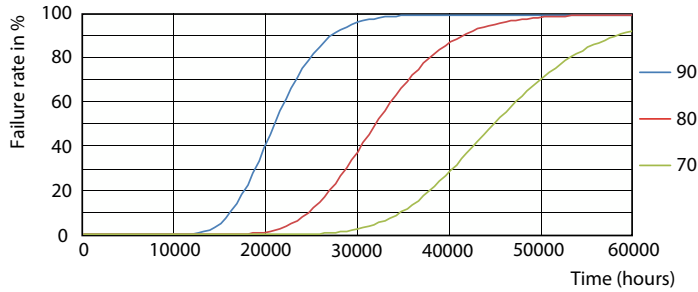
# CorePro LED PLL

## Photometric data

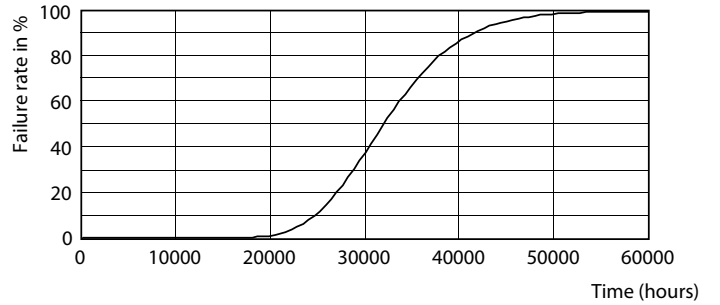


Spectral Power Distribution Colour - CorePro LED PLL HF 24W 840 4P 2G11

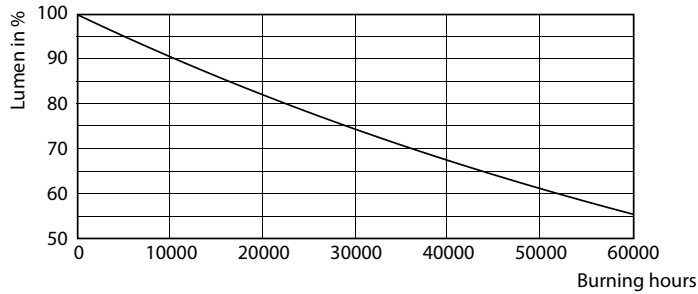
## Lifetime



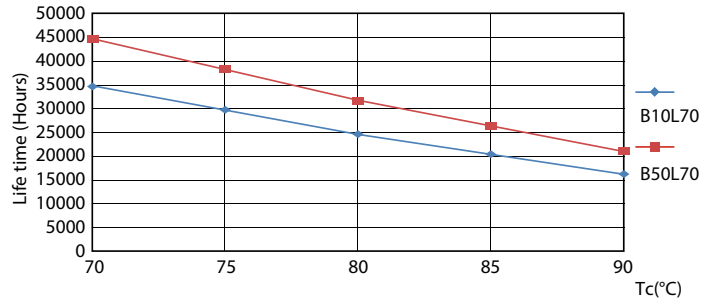
Life Expectancy Diagram - CorePro LED PLL HF 24W 840 4P 2G11



Life Expectancy Diagram - CorePro LED PLL HF 24W 840 4P 2G11



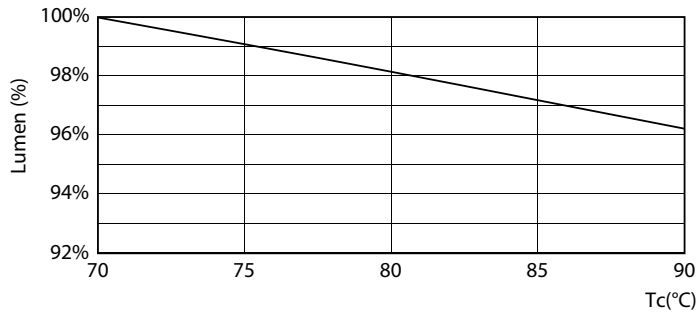
Lumen Maintenance Diagram - CorePro LED PLL HF 24W 840 4P 2G11



Life Expectancy Diagram - CorePro LED PLL HF 24W 840 4P 2G11

# CorePro LED PLL

## Lifetime



Lumen Maintenance Diagram - CorePro LED PLL HF 24W 840 4P 2G11

