



# MASTER LEDtube Mains T5



## MAS LEDtube 1500mm HO 26W 830 T5

The new Philips Master LEDtube Mains T5 brings simplicity to your lighting project. You don't need to pay attention to the driver technology anymore. Thanks to a unique design, Philips MASTER LEDtube Mains T5 installs in luminaires operating on mains power connection. So simple to operate! . Perfectly safe, reliable & easy to install Philips MASTER LEDtube Mains T5 is the ideal alternative to standard fluorescent tubes to maximize value over lifetime with high energy saving and lower maintenance costs.

### Product data

General Information		LLMF At End Of Nominal Lifetime (Nom)		70 %
Cap-Base	G5	Flickering value (PstLM) - Flickering value as per EN 61000-3-3	1	
Nominal lifetime	50,000 hour(s)	Stroboscopic effect visibility measure (SVM)	0.4	
Switching Cycle	200,000	Photobiological safety according to EN 62471	RG0	
Lighting Technology	LED	Operating and Electrical		
Flux measurement reference	Sphere	Line Frequency	50 to 60 Hz	
CE mark	Yes	Input Frequency	50 to 60 Hz	
EU RoHS compliant	Yes	Power Consumption	26 W	
Light Technical		Lamp Current (Nom)	125 mA	
Color Code	830 [CCT of 3000K]	Starting Time (Nom)	0.5 s	
Beam Angle (Nom)	200 degree(s)	Warm-up time to 60% light	0.5 s	
Luminous Flux	3,600 lm	Power Factor (Fraction)	0.92	
Color Designation	White (WH)	Voltage (Nom)	220-240 V	
Correlated Color Temperature (Nom)	3000 K	LED alternative to fluorescent lamp power	49 W	
Luminous Efficacy (rated) (Nom)	138 lm/W	Inrush current at mains	20	
Color Consistency	<6	Max. lamp no. on MCB B type 10A - Mains	31	
Color rendering index (CRI)	80			

# MASTER LEDtube Mains T5

Max. lamp no. on MCB B type 10A – EM ballast without Comp. Cap.	-
Max. lamp no. on MCB B type 10A – EM ballast with Comp. Cap.	-
Max. lamp no. on MCB B type 16A – Mains	50
Max. lamp no. on MCB B type 16A – EM ballast without Comp. Cap.	-
Max. lamp no. on MCB B type 16A – EM ballast with Comp. Cap.	-
Ballast Compatibility	Mains

## Temperature

Ambient temperature range	-20 to +45 °C
T-Case Maximum (Nom)	65 °C

## Controls and Dimming

Dimmable	No
----------	----

## Mechanical and Housing

Bulb Finish	Frosted
Bulb Material	Glass
Product Length	1,500 mm
Bulb Shape	T5

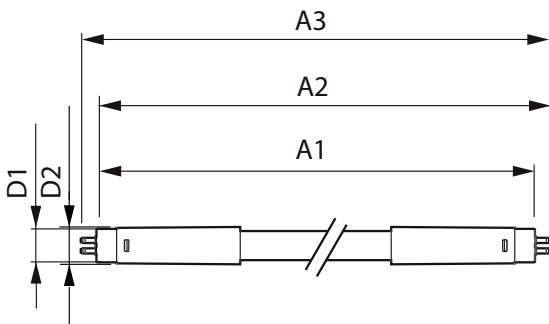
## Approval and Application

Energy Efficiency Class	D
Energy Saving Product	Yes
Approval Marks	RoHS compliance TUV CE marking KEMA Keur certificate
Energy Consumption kWh/1000 h	26 kWh
EPREL Registration Number	1476412

## Product Data

Order product name	MAS LEDtube 1500mm HO 26W 830 T5
Full product name	MAS LEDtube 1500mm HO 26W 830 T5
Full product code	871869681929600
Order code	929001908802
Material Nr. (12NC)	929001908802
Numerator - Quantity Per Pack	1
EAN/UPC - Product/Case	8718696819296
Numerator - Packs per outer box	10
EAN/UPC - Case	8718696819302

## Dimensional drawing



Product	D1	D2	A1	A2	A3
MAS LEDtube 1500mm HO 26W 830 T5	15.5 mm	17.1 mm	1,449 mm	1,456 mm	1,463 mm



# MASTER LEDtube Mains T5

## Lifetime



Lumen Maintenance Diagram - MAS LEDtube 1500mm HO 26W 830 T5

Lumen Maintenance Diagram - MAS LEDtube 1500mm HO 26W 830 T5



Life Expectancy Diagram - MAS LEDtube 1500mm HO 26W 830 T5

