



PL-C/T

12PL-C/T/COR/32V-840/IF15/P/4P/DIM 10/1

Philips PLED 4-pin & 2-pin lamps are an affordable LED solution to replace compact fluorescent lamps. The product provides a natural lighting effect for use in many lighting applications, and provides instant energy savings, making them an environmentally-friendly solution. Available as replacements for 13W, 26W and 32W compact fluorescent lamps.

Product data

| General Information | | Lamp Current (Max) | |
|---------------------------------------|--------------------|---------------------------|-----------------|
| Cap-Base | GX24q | Lamp Current (Max) | 500 mA |
| Nominal lifetime | 50,000 hour(s) | Lamp Current (Min) | 150 mA |
| Switching Cycle | 50,000 | Wattage Equivalent | 32 W |
| Lighting Technology | LED | Starting Time (Nom) | 0.5 s |
| EU RoHS compliant | Yes | Warm-up time to 60% light | 0.5 s |
| | | Power Factor (Fraction) | 0.9 |
| | | Voltage (Nom) | 25-55 V |
| | | UL Type | UL Type A |
| Light Technical | | Temperature | |
| Color Code | 840 [CCT of 4000K] | Ambient temperature range | -20 °C to 45 °C |
| Beam Angle (Nom) | 120 degree(s) | T-Case Maximum (Nom) | 25 °C |
| Luminous Flux | 1,500 lm | | |
| Color Designation | Cool White (CW) | Controls and Dimming | |
| Correlated Color Temperature (Nom) | 4000 K | Dimmable | Yes |
| Luminous Efficacy (rated) (Nom) | 125.00 lm/W | | |
| Color Consistency | <6 | Mechanical and Housing | |
| Color rendering index (CRI) | 82 | Bulb Finish | Frosted |
| LLMF At End Of Nominal Lifetime (Nom) | 70 % | Bulb Material | Plastic |
| | | Product Length | 100 mm |
| | | Bulb Shape | PL-C;PL-T |
| Operating and Electrical | | | |
| Line Frequency | 20000-100000 Hz | | |
| Input Frequency | 20000-100000 Hz | | |
| Power Consumption | 12 W | | |

PL-C/T

Approval and Application

| | |
|-------------------------------|---|
| Energy Saving Product | Yes |
| Approval Marks | RoHS compliance UL certificate KEMA Keur certificate DLC compliance |
| Energy Consumption kWh/1000 h | - kWh |
| Energy Certifications | DLC Standard |

Application Conditions

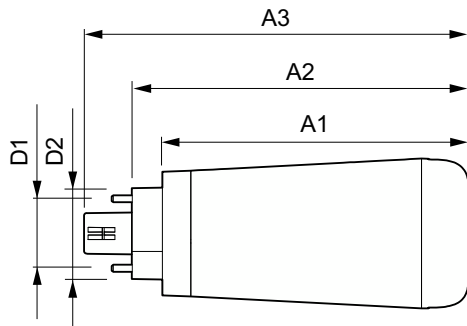
| | |
|-------------------------------------|-----|
| can it be used in closed luminaires | Yes |
|-------------------------------------|-----|

Product Data

| | |
|--------------------|---|
| Order product name | 12PL-C/T/COR/32V-840/IF15/P/4P/DIM 10/1 |
|--------------------|---|

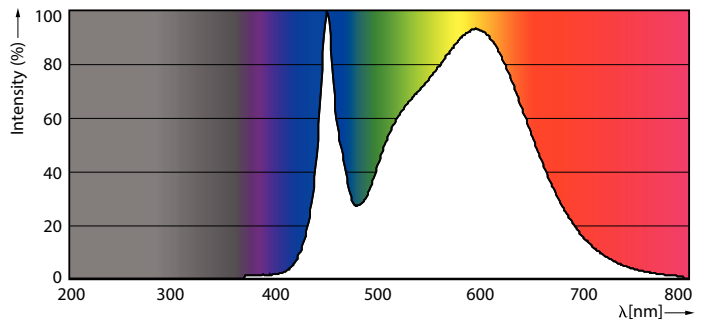
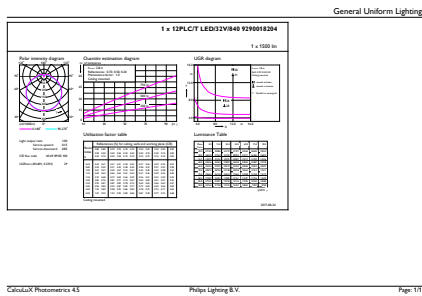
| | |
|---------------------------------|---|
| Full product name | 12PL-C/T/COR/32V-840/IF15/P/4P/DIM 10/1 |
| Order code | 929001820404 |
| Material Nr. (12NC) | 929001820404 |
| Numerator - Quantity Per Pack | 1 |
| EAN/UPC - Product/Case | 046677476137 |
| Numerator - Packs per outer box | 10 |
| EAN/UPC - Case | 50046677476132 |

Dimensional drawing



| Product | D1 | D2 | A1 | A2 | A3 |
|---|---------|-------|---------|----------|----------|
| 12PL-C/T/COR/32V-840/IF15/P/4P/DIM 10/1 | 24.3 mm | 29 mm | 99.9 mm | 109.9 mm | 125.5 mm |

Photometric data

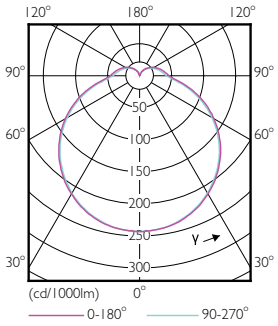


General uniform lighting - 12PL-C/T/COR/32V-840/IF15/P/4P/DIM 10/1

Spectral Power Distribution Colour - 12PL-C/T/COR/32V-840/IF15/P/4P/DIM 10/1

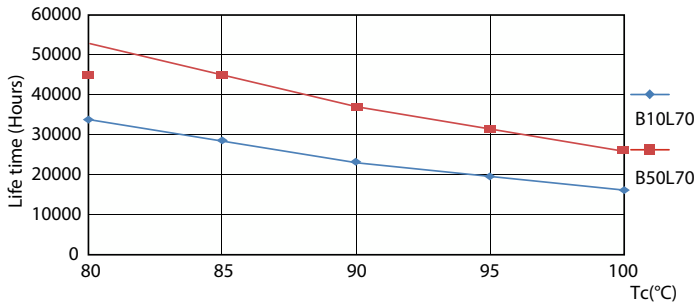
PL-C/T

Photometric data

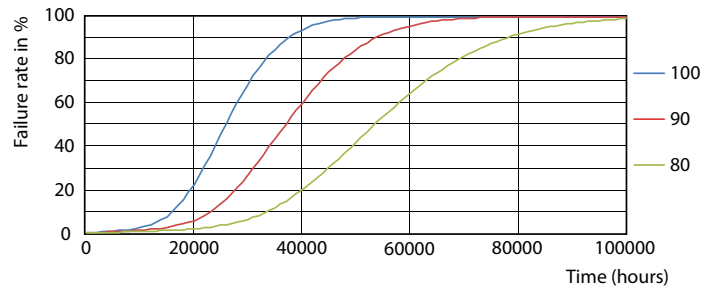


Light Distribution Diagram - 12PL-C/T/COR/32V-840/IF15/P/4P/DIM 10/1

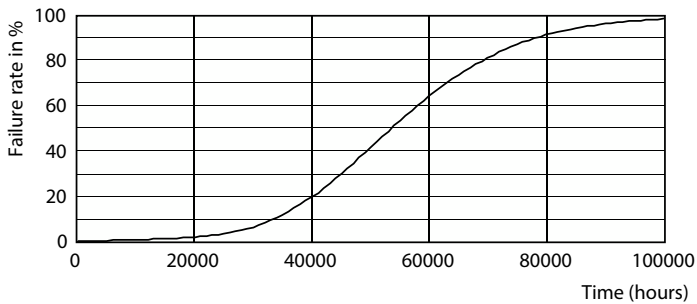
Lifetime



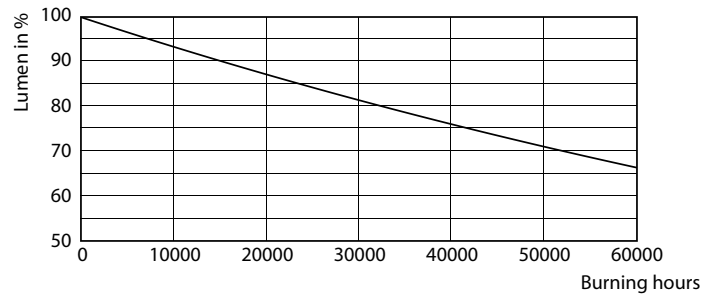
Life Expectancy Diagram - 12PL-C/T/COR/32V-840/IF15/P/4P/DIM 10/1



Life Expectancy Diagram - 12PL-C/T/COR/32V-840/IF15/P/4P/DIM 10/1



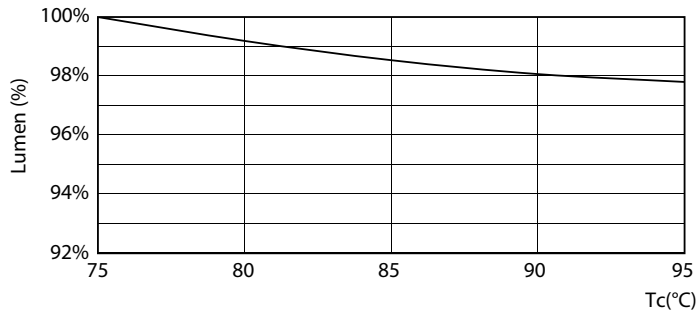
Life Expectancy Diagram - 12PL-C/T/COR/32V-840/IF15/P/4P/DIM 10/1



Lumen Maintenance Diagram - 12PL-C/T/COR/32V-840/IF15/P/4P/DIM 10/1

PL-C/T

Lifetime



Lumen Maintenance Diagram - 12PL-C/T/COR/32V-840/IF15/P/4P/DIM
10/1

