



# PL-C/T

## 12PL-C/T/COR/32V-835/IF14/P/4P/DIM 10/1

Philips PLED 4-pin & 2-pin lamps are an affordable LED solution to replace compact fluorescent lamps. The product provides a natural lighting effect for use in many lighting applications, and provides instant energy savings, making them an environmentally-friendly solution. Available as replacements for 13W, 26W and 32W compact fluorescent lamps.

### Product data

General Information		Lamp Current (Max)	
Cap-Base	GX24q	Lamp Current (Max)	500 mA
Nominal lifetime	50,000 hour(s)	Lamp Current (Min)	150 mA
Switching Cycle	50,000	Wattage Equivalent	32 W
Lighting Technology	LED	Starting Time (Nom)	0.5 s
EU RoHS compliant	Yes	Warm-up time to 60% light	0.5 s
		Power Factor (Fraction)	0.9
		Voltage (Nom)	25-55 V
		UL Type	UL Type A
Light Technical		Temperature	
Color Code	835 [CCT of 3500K]	Ambient temperature range	-20 °C to 45 °C
Beam Angle (Nom)	120 degree(s)	T-Case Maximum (Nom)	25 °C
Luminous Flux	1,450 lm		
Color Designation	White (WH)	Controls and Dimming	
Correlated Color Temperature (Nom)	3500 K	Dimmable	Yes
Luminous Efficacy (rated) (Nom)	120.00 lm/W		
Color Consistency	<6	Mechanical and Housing	
Color rendering index (CRI)	82	Bulb Finish	Frosted
LLMF At End Of Nominal Lifetime (Nom)	70 %	Bulb Material	Plastic
		Product Length	100 mm
		Bulb Shape	PL-C;PL-T
Operating and Electrical			
Line Frequency	20000-100000 Hz		
Input Frequency	20000-100000 Hz		
Power Consumption	12 W		

# PL-C/T

## Approval and Application

Energy Saving Product	Yes
Approval Marks	RoHS compliance UL certificate KEMA Keur certificate DLC compliance
Energy Consumption kWh/1000 h	- kWh
Energy Certifications	DLC Standard

## Application Conditions

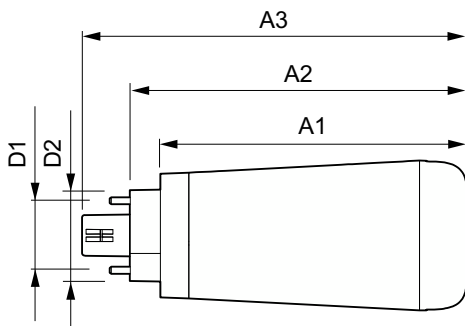
can it be used in closed luminaires	Yes
-------------------------------------	-----

## Product Data

Order product name	12PL-C/T/COR/32V-835/IF14/P/4P/DIM 10/1
--------------------	---

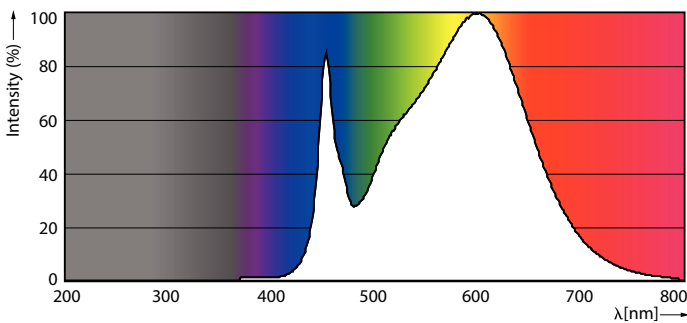
Full product name	12PL-C/T/COR/32V-835/IF14/P/4P/DIM 10/1
Order code	929001820304
Material Nr. (12NC)	929001820304
Numerator - Quantity Per Pack	1
EAN/UPC - Product/Case	046677476120
Numerator - Packs per outer box	10
EAN/UPC - Case	50046677476125

## Dimensional drawing

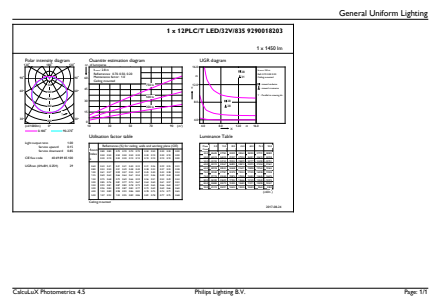


Product	D1	D2	A1	A2	A3
12PL-C/T/COR/32V-835/IF14/P/4P/DIM 10/1	24.3 mm	29 mm	99.9 mm	109.9 mm	125.5 mm

## Photometric data

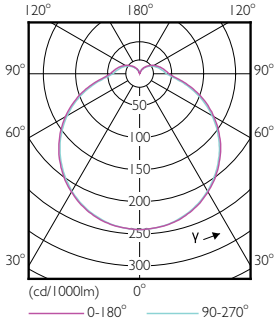


Spectral Power Distribution Colour - 12PL-C/T/COR/32V-835/IF14/P/4P/DIM 10/1



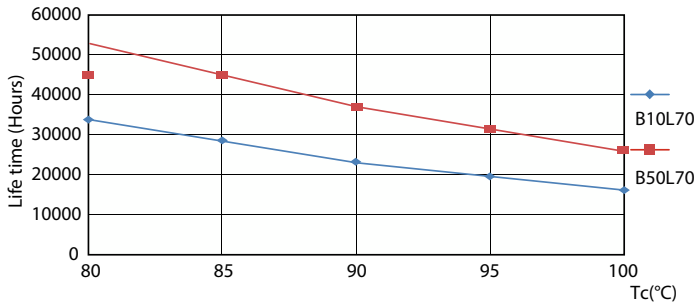
General uniform lighting - 12PL-C/T/COR/32V-835/IF14/P/4P/DIM 10/1

Photometric data

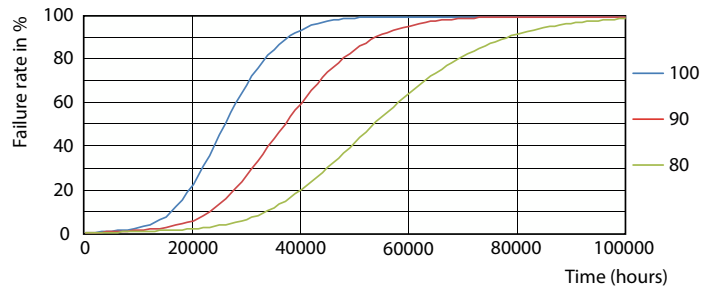


Light Distribution Diagram - 12PL-C/T/COR/32V-835/IF14/P/4P/DIM 10/1

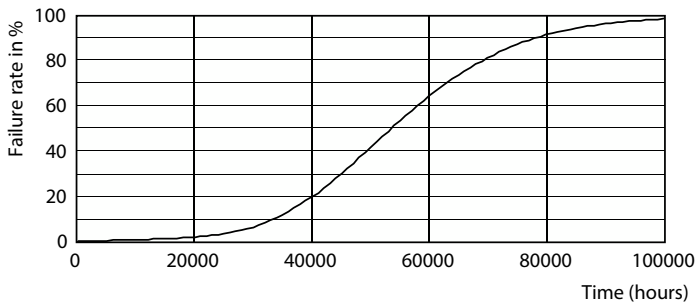
Lifetime



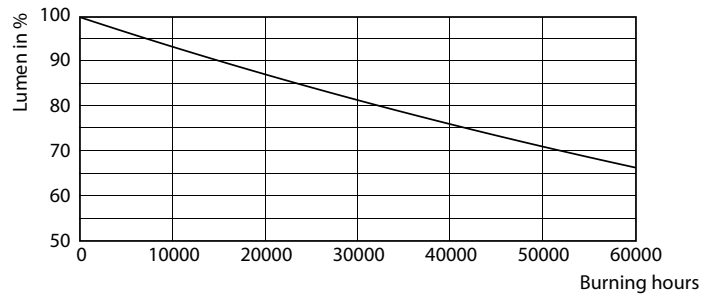
Life Expectancy Diagram - 12PL-C/T/COR/32V-835/IF14/P/4P/DIM 10/1



Life Expectancy Diagram - 12PL-C/T/COR/32V-835/IF14/P/4P/DIM 10/1



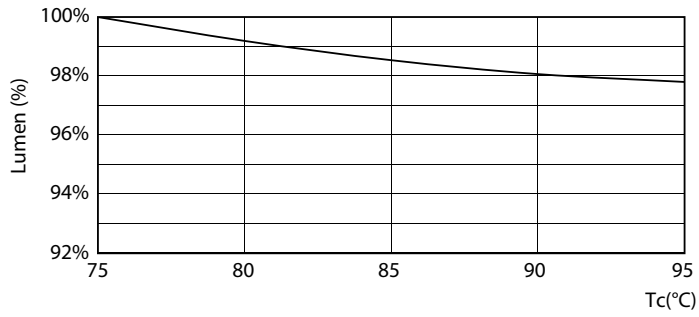
Life Expectancy Diagram - 12PL-C/T/COR/32V-835/IF14/P/4P/DIM 10/1



Lumen Maintenance Diagram - 12PL-C/T/COR/32V-835/IF14/P/4P/DIM 10/1

# PL-C/T

## Lifetime



Lumen Maintenance Diagram - 12PL-C/T/COR/32V-835/IF14/P/4P/DIM 10/1

