



TrueForce LED Public (Urban/Road – HPS/MH)

35ED23.5/LED/727/ND 120-277V G2 4/1

Philips TrueForce LED Public Urban lamps provide an easy LED solution with a fast payback to replace High Intensity Discharge (HID) lamps. These lamps bring the energy efficiency and long lifetime benefits of LED to HID replacement, with a low initial investment delivering instant savings. With the right light distribution, compact lamp size and light weight, customers can easily retrofit TrueForce LED lamps into their existing system, thereby improving the light quality without having to change the fixtures or sacrifice the light effect. NAM Mogul E39 NEMA socket (3-pin ANSI receptacle) version offers connected lighting capability by adding connector node. Each individual light point can be controlled and monitored remotely to enhance flexibility, energy saving and operation efficiency.

Product data

General Information		Correlated Color Temperature (Nom)	
Cap-Base	E39 [Single Contact Mogul Screw]	Correlated Color Temperature (Nom)	2700 K
Nominal lifetime	50,000 hour(s)	Luminous Efficacy (rated) (Nom)	125.00 lm/W
Switching Cycle	50,000	Color Consistency	ANSI 2700K
Lighting Technology	LED	Color rendering index (CRI)	70
EU RoHS compliant	Yes	LLMF At End Of Nominal Lifetime (Nom)	70 %
Light Technical		Operating and Electrical	
Color Code	727 [CCT of 2700K]	Line Frequency	50 to 60 Hz
Beam Angle (Nom)	360 degree(s)	Input Frequency	50 to 60 Hz
Luminous Flux	4,800 lm	Power Consumption	35 W
Color Designation	Warm White (WW)	Lamp Current (Nom)	300 A
		Starting Time (Nom)	0.5 s

TrueForce LED Public (Urban/Road – HPS/MH)

Warm-up time to 60% light	0.5 s
Power Factor (Fraction)	0.9
Voltage (Nom)	120-277 V

Temperature

T-Case Maximum (Nom)	158 °F
----------------------	--------

Controls and Dimming

Dimmable	No
----------	----

Mechanical and Housing

Bulb Finish	Clear
Bulb Material	Plastic
Bulb Shape	Others

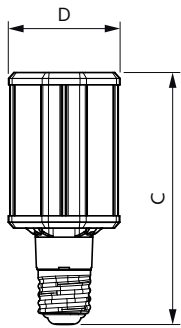
Approval and Application

Energy Consumption kWh/1000 h	- kWh
-------------------------------	-------

Product Data

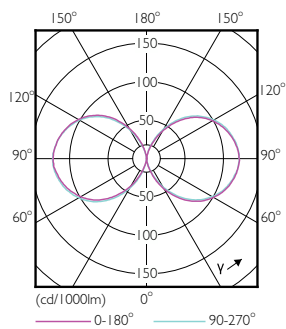
Order product name	35ED23.5/LED/727/ND 120-277V G2 4/1
Full product name	35ED23.5/LED/727/ND 120-277V G2 4/1
Order code	473629
Material Nr. (12NC)	929001396704
Numerator - Quantity Per Pack	1
EAN/UPC - Product/Case	046677473624
Numerator - Packs per outer box	4
EAN/UPC - Case	50046677473629

Dimensional drawing

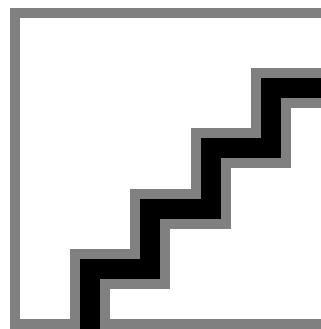


Product	D	C
35ED23.5/LED/727/ND 120-277V G2 4/1	3-5/16 inch	7-1/2 inch

Photometric data



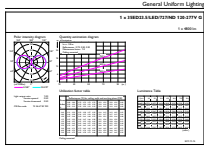
Light Distribution Diagram - 35ED23.5/LED/727/ND 120-277V G2 4/1



Spectral Power Distribution Colour - 35ED23.5/LED/727/ND 120-277V G2 4/1

TrueForce LED Public (Urban/Road – HPS/MH)

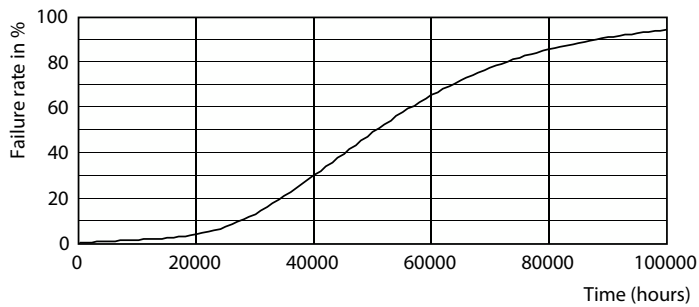
Photometric data



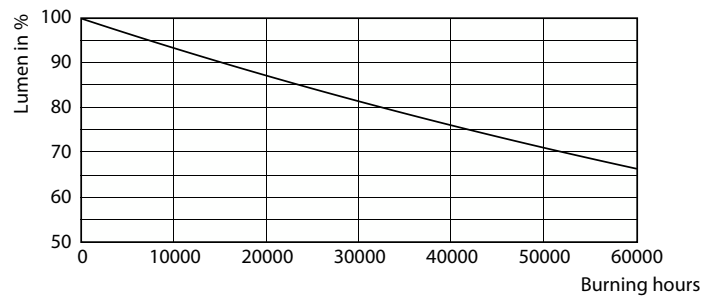
General of Parameters 4.1 Photo Lighting 8.1 Page 17

General uniform lighting - 35ED23.5/LED/727/ND 120-277V G2 4/1

Lifetime



Life Expectancy Diagram - 35ED23.5/LED/727/ND 120-277V G2 4/1



Lumen Maintenance Diagram - 35ED23.5/LED/727/ND 120-277V G2 4/1

