



# MASTER LEDtube InstantFit HF T8



## MAS LEDtube HF 1200mm HO 14W830 T8

Philips MASTER LEDtube InstantFit T8 integrates a LED light source into a traditional fluorescent form factor. Its unique design creates a perfectly uniform visual appearance which cannot be distinguished from traditional fluorescent. Philips MASTER LEDtube InstantFit T8 is the ideal solution for customers who have higher light requirements and want to maximize value over lifetime. Full energy savings & longer lifetime result in attractive payback times and TCO benefits.

### Warnings and Safety

- NOTES: The overall energy efficiency and light distribution of any installation that uses these lamps are determined by the design of the installation.

### Product data

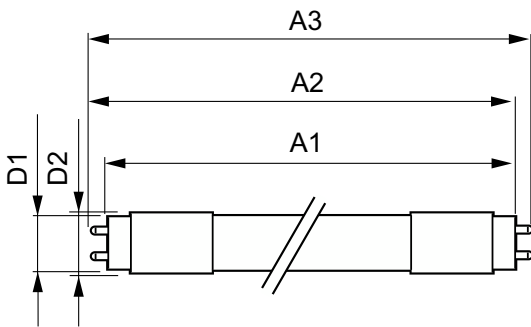
General Information		Operating and Electrical	
Cap-Base	G13 ROT (Rotating) [Medium Bi-Pin Fluorescent]	Correlated Color Temperature (Nom)	3000 K
Nominal lifetime	60,000 hour(s)	Luminous Efficacy (rated) (Nom)	142.00 lm/W
Switching Cycle	50,000	Color Consistency	<6
Lighting Technology	LED	Color rendering index (CRI)	83
Flux measurement reference	Sphere	LLMF At End Of Nominal Lifetime (Nom)	70 %
CE mark	Yes	Line Frequency	20000-75000 Hz
EU RoHS compliant	Yes	Input Frequency	20000-75000 Hz
Color Code	830 [CCT of 3000K]	Power Consumption	14 W
Beam Angle (Nom)	160 degree(s)	Lamp Current (Max)	750 mA
Luminous Flux	2,000 lm	Lamp Current (Min)	300 mA
Color Designation	White (WH)	Starting Time (Nom)	0.5 s
		Warm-up time to 60% light	0.5 s
		Power Factor (Fraction)	0.9

# MASTER LEDtube InstantFit HF T8

Voltage (Nom)	30-80 V
<b>Temperature</b>	
Ambient temperature range	-20 °C to 45 °C
T-Case Maximum (Nom)	55 °C
<b>Controls and Dimming</b>	
Dimmable	No
<b>Mechanical and Housing</b>	
Bulb Material	Plastic
Product Length	1,200 mm
Bulb Shape	T8
<b>Approval and Application</b>	
Energy Efficiency Class	E
Energy Saving Product	Yes

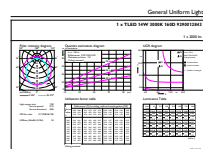
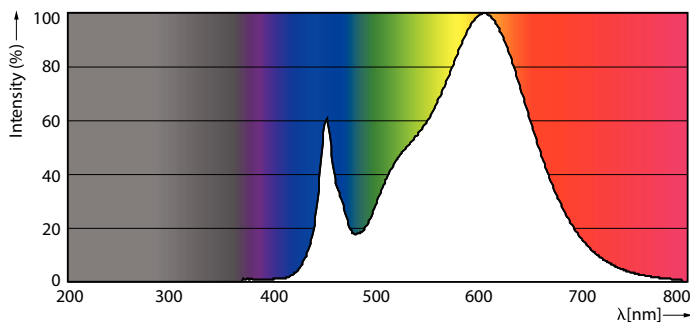
Approval Marks	RoHS compliance TUV CE marking KEMA Keur certificate
Energy Consumption kWh/1000 h	14 kWh
EPREL Registration Number	387369
<b>Product Data</b>	
Order product name	MAS LEDtube HF 1200mm HO 14W830 T8
Full product name	MAS LEDtube HF 1200mm HO 14W830 T8
Full product code	871869668752900
Order code	929001284302
Material Nr. (12NC)	929001284302
Numerator - Quantity Per Pack	1
EAN/UPC - Product/Case	8718696687529
Numerator - Packs per outer box	10
EAN/UPC - Case	8718696687536

## Dimensional drawing



Product	D1	D2	A1	A2	A3
MAS LEDtube HF 1200mm HO 14W830 T8	25.6 mm	28 mm	1,198.1 mm	1,205.2 mm	1,212.3 mm

## Photometric data



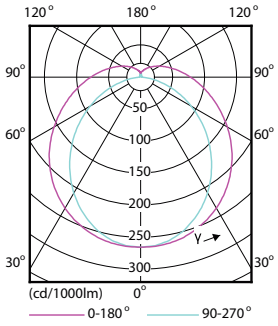
General uniform lighting - MAS LEDtube HF 1200mm HO 14W830 T8

Spectral Power Distribution Colour - MAS LEDtube HF 1200mm HO 14W830 T8

General uniform lighting - MAS LEDtube HF 1200mm HO 14W830 T8

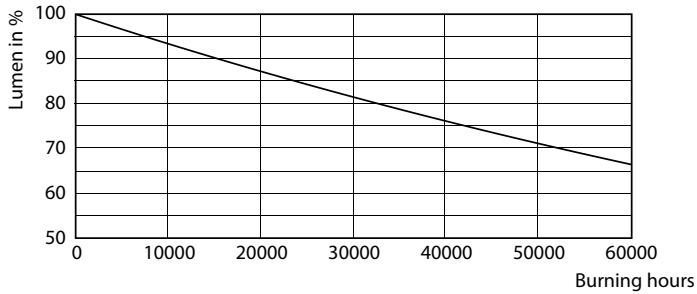
# MASTER LEDtube InstantFit HF T8

## Photometric data

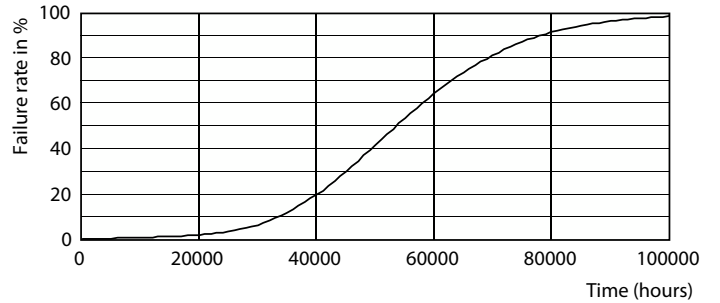


Light Distribution Diagram - MAS LEDtube HF 1200mm HO 14W830 T8

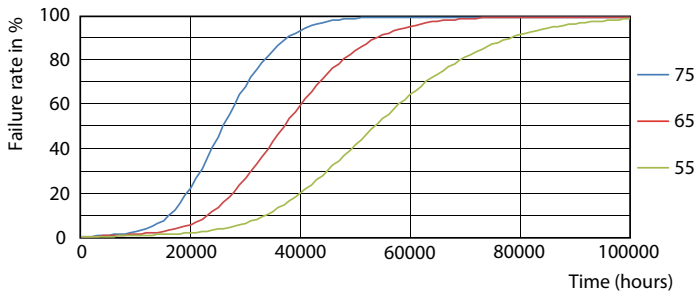
## Lifetime



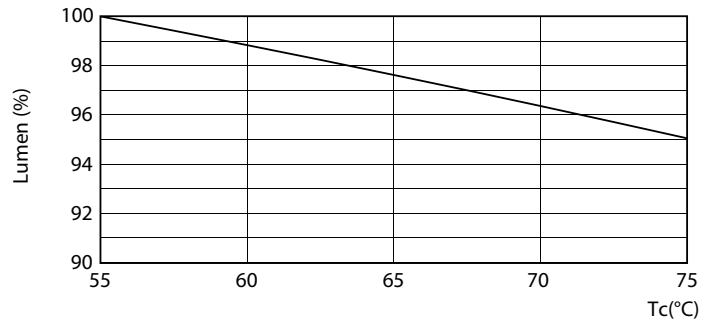
Lumen Maintenance Diagram - MAS LEDtube HF 1200mm HO 14W830 T8



Life Expectancy Diagram - MAS LEDtube HF 1200mm HO 14W830 T8



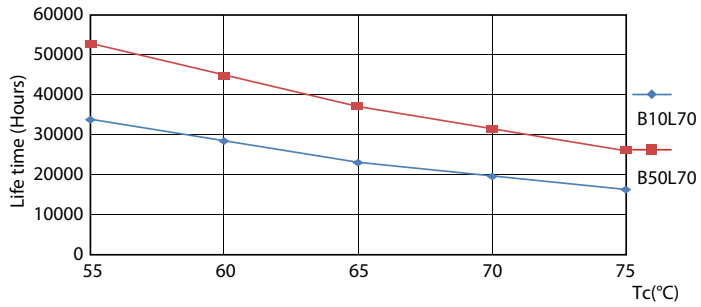
Life Expectancy Diagram - MAS LEDtube HF 1200mm HO 14W830 T8



Lumen Maintenance Diagram - MAS LEDtube HF 1200mm HO 14W830 T8

# MASTER LEDtube InstantFit HF T8

## Lifetime



Life Expectancy Diagram - MAS LEDtube HF 1200mm HO 14W830 T8

