



# 建築照明的 DMX 控制與佈線配件

## ZXP399 DMX 控制及配件

ZXP399 DMX 控制與佈線配件須搭配本公司的建築立面照明燈具使用 (UniFlood C, M and G, UniStrip G4, UniEdge, UniDot G2, UniString 和 UniBar)。DMX 控制包括主控制器、獨立控制器、副控制器、DMX 放大器和 DMX 尋址裝置。主控制器：工業電腦，可控制高達 6000 DMX 的四周照明度。獨立控制器：適合中間等級達 700 DMX 四周照明度的應用場合。佈線配件包括導線電纜和跳線電纜，搭配 IP67 標準的公 / 母接頭和端帽。尋址裝置：可在數分鐘內將 DMX 位址全程寫入現場運轉機組的手持式裝置。DMX 放大器：外型輕巧，IP65 標準的低電源中繼器，可將 DMX 信號放大到 100 公尺遠的地方。

### 應用

- 橋樑、古蹟和建築立面
- 造景燈
- 公園和廣場

### Versions



ZXP399 Endcap F



sub-controller 16P DMX



ZXP399 Endcap M



standalone controller

# ZXP399 DMX 控制及配件

## Versions



DMX Amplifier

Main controller DMX

ZXP399 Y Connector

Addressing Kit



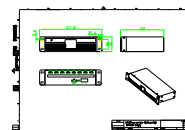
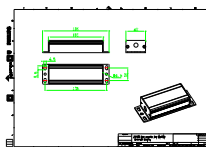
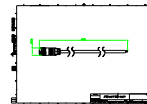
DMX Amplifier

DMX Amplifier

ZXP399 Jumper DMX connector

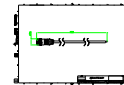
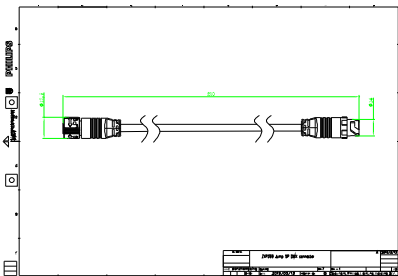
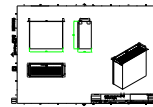
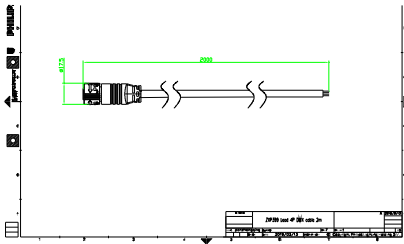
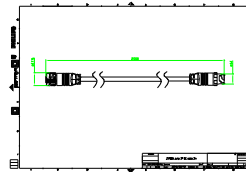
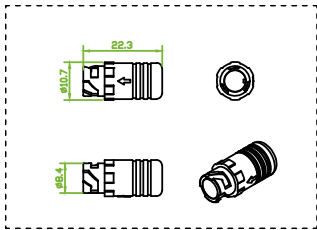
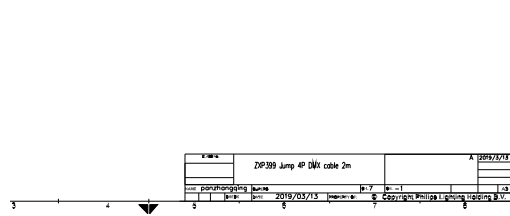
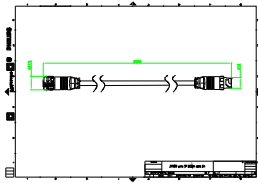
DMX Amplifier

## 二维绘图



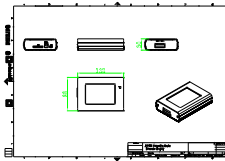
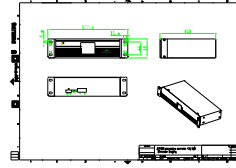
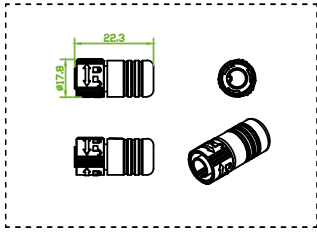
# ZXP399 DMX 控制及配件

## 二维绘图



# ZXP399 DMX 控制及配件

## 二维绘图



## 产品详细

DMX sub-controller



DMX sub-controller



DMX stand-alone controller



DMX sub-controller



DMX sub-controller



DMX sub-controller



# ZXP399 DMX 控制及配件

## 产品详细

DMX sub-controller



DMX stand-alone controller



DMX main controller



DMX addressing kit



DMX addressing kit



DMX sub-controller



DMX addressing kit



DMX stand-alone controller



DMX stand-alone controller



DMX main controller



DMX main controller



DMX main controller



## ZXP399 DMX 控制及配件

### 产品详细

DMX stand-alone controller

