



# Installation Guide

## — Philips Master LED SON-T lamp

Please take the time to read this installation guide. The guide contains important information and notes regarding the installation and operation.

### IMPORTANT!

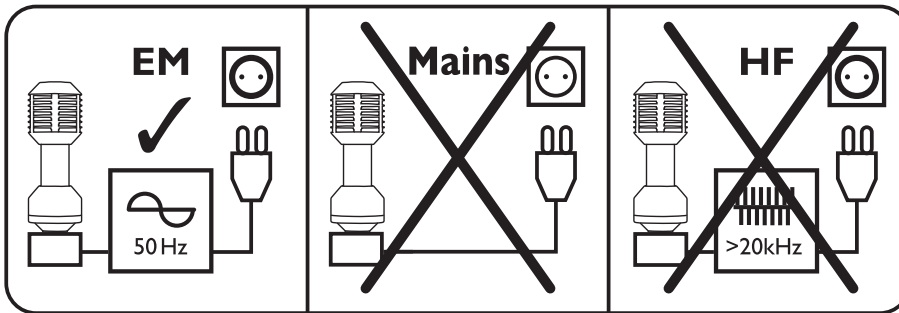
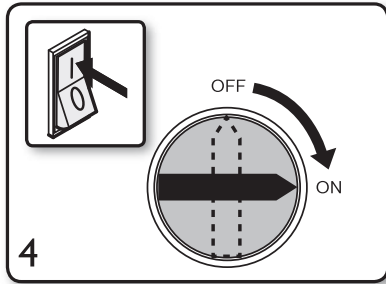
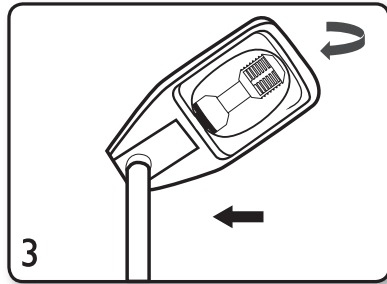
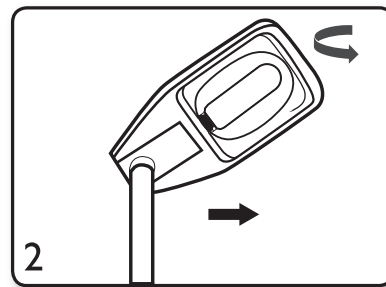
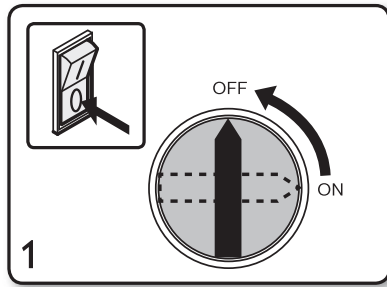
- The product is designed to fit in standard IEC compliant E27/E40 lamp holders.
- Always switch off the power supply before commencing work!
- Please read the installation instructions carefully to ensure safety.
- The product is not dimmable.
- The product is not compatible to use with electronic ballast.
- This product is not used to mains voltage directly.
- Suitable for use in operating temperature range between  $-40^{\circ}\text{C}$  to  $+45^{\circ}\text{C}$ .
- Do not change the structure or any components of the product to ensure safety.
- The product should be installed by professional electrician.
- Perform inspection before installation to ensure the luminaire and lamp holder are in good condition to carry the weight and performance of the product.
- The product fulfills IP40 requirements, outdoor applications require the lamps to be used in luminaires with suitable IP rating.
- Use in horizontal  $\pm 15^{\circ}$  burning position only.
- Please do not apply the product in applications which contains emergency or/and explosive proof luminaires.
- The total system performance may vary depending on the lighting/luminaire system.
- For latest information, please refer to [www.philips.com/lighting](http://www.philips.com/lighting).
- In case of doubt, please consult Signify representative.
- If LED lamp is being use within luminaire, for lamp with E27 cap, the minimum dimensions requirement on lamp compartment is (Hx $\emptyset$ ) 220mmx 170mm, for lamp with E40 cap, the minimum dimensions requirement on lamp compartment is (Hx $\emptyset$ ) 280mmx 185mm. If the luminaire comes with a glass/cover, it's recommended to detach it for optimal light efficiency and product lifetime. Please check the tc temperature in application guide for best performance.
- Do not install any lamp which is deformed or damaged from transportation or handling.
- Compatible with EM ballasts 50Hz only.
- Keep lamps clear during application (esp. no oil contamination on glass tube), to ensure good lamp performance.
- Do not use in open luminaires

#### DISCLAIMER:

Signify disclaims liability for any direct, indirect or incidental damages in case of installation performed either not according to this guide or not performed by a professional electrician.

CE **RoHS**  
COMPLIANT **IP40**

**PHILIPS**



SYMBOL	MEANING
	Lamp suitable for 50hz or 60hz operation
	Caution, risk of electric shock! Do not dismount lamp housing and lightsource
	Dimming not allowed
	Lamp not suitable for use under dust and moisture
	Lamp not suitable for emergency operation.
	Do not stare at the operating light source
	This product should not be disposed with other household wastes throughout the EU

Please inform yourself about the local waste disposal, separation and collection system for electrical and electronic products and packaging. Please act according to your local rules and do not dispose your old product and packaging with your normal household waste. The correct disposal of the packaging, your product and/or batteries will help prevent potential negative consequences for the environment and human health. Batteries should be disposed separately from the municipal waste stream via designated collection facilities. When disposing a product that contains non-user replaceable batteries, the non-user replaceable batteries shall be removed by a professional.

© 2022 Signify Holding  
@ignify

Philips and the Philips Shield Emblem are registered trademarks of Koninklijke Philips N.V. and are used under license. All rights reserved. Reproduction in whole or in part is prohibited without the prior written consent of the copyright owner. The information presented in this document does not form part of any quotation or contract, is believed to be accurate and reliable and may be changed without notice. No liability will be accepted by the publisher for any consequence of its use. Publication thereof does not convey nor imply any license under patent or other industrial or intellectual property rights.

