

WESLEY VREESWIJK, THE NETHERLANDS
FEBRUARY 2020

First experience with the Philips CoralCare Gen2.

2 months ago, I started testing the new Philips CoralCare generation.

The first thing I noticed is that the corals have more fluorescence during daytime.

Some of the colors of the corals are only visible in the blue phase in the morning or evening. Great to see all these beautiful colors the whole day.

The looks of the unit are great, beautiful compact design and they are much lighter than the first generation.

The first month it was not easy to find the perfect schedule for the right colors and growth.

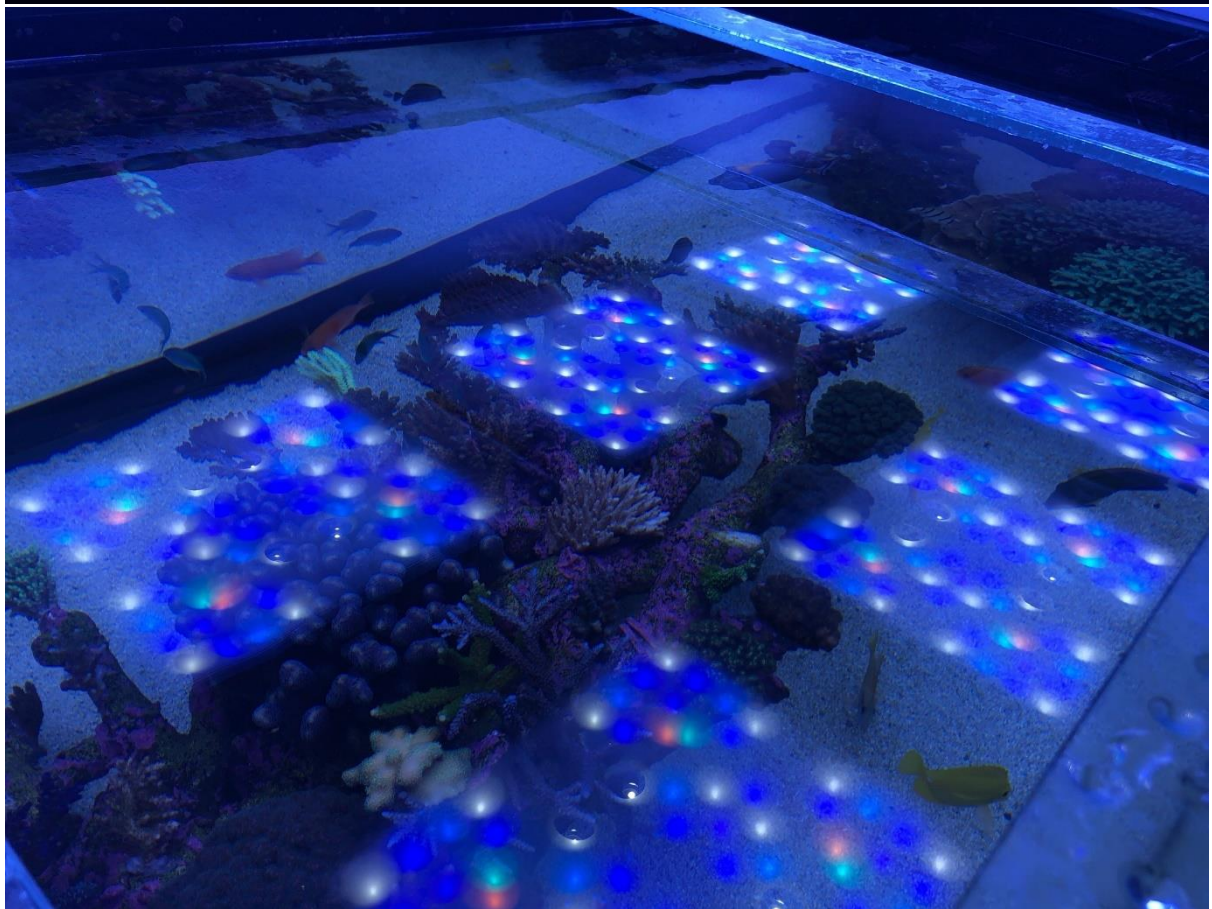
But now I have found the perfect schedule for my sps dominated tank.

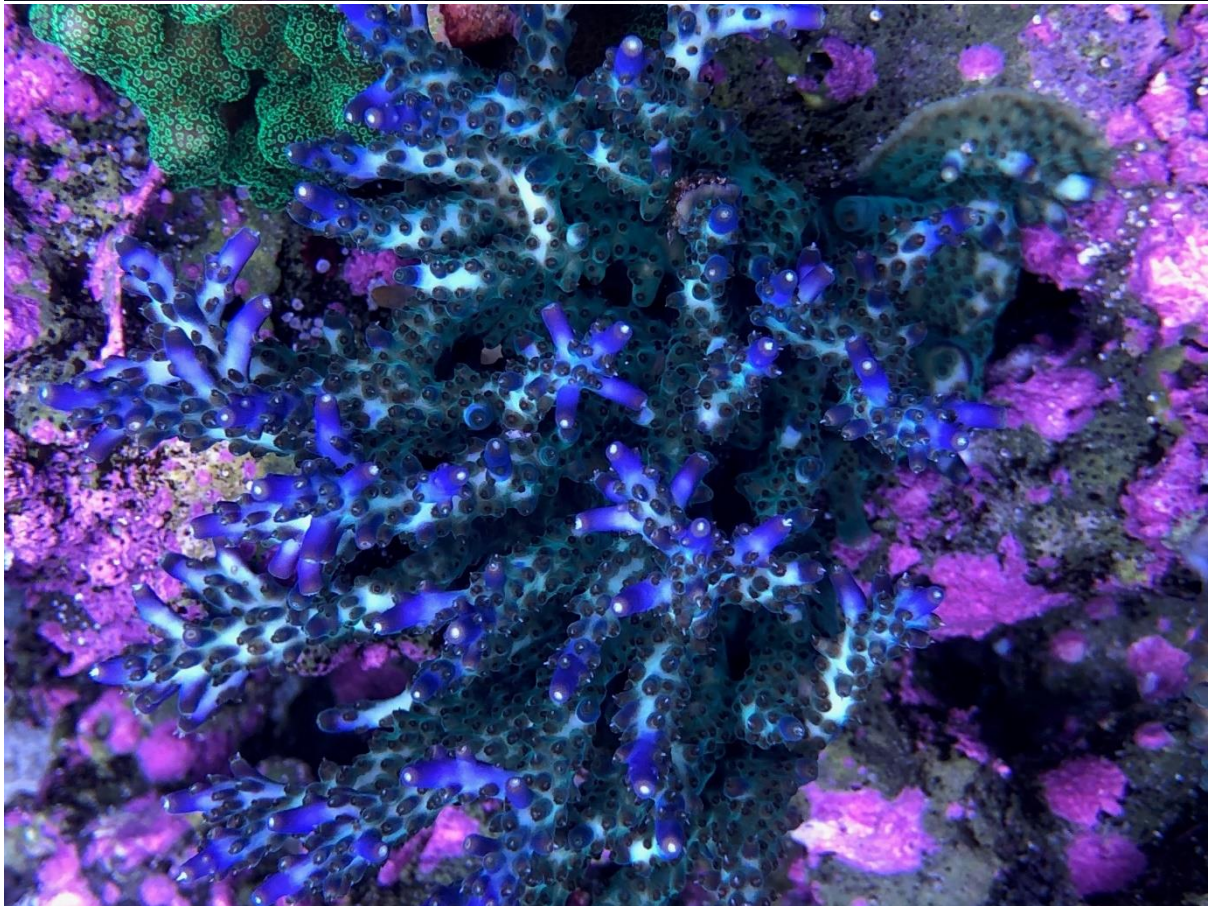
Colors are great and growth is perfect.

On my tank I love to use more blue settings for my corals, with my current light schedule I run at 82% intensity.

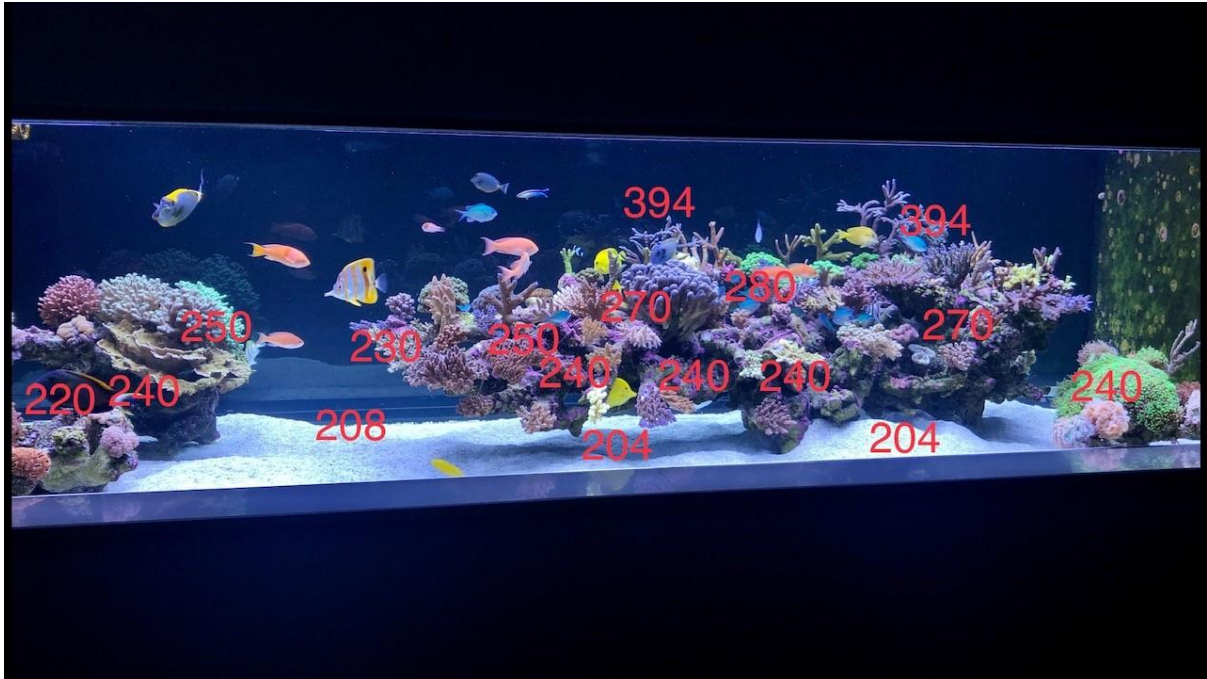
I have also done a par measurement with the apogee quantum plus. Great test results.

In the pictures below you can find my schedule and the par measurements.



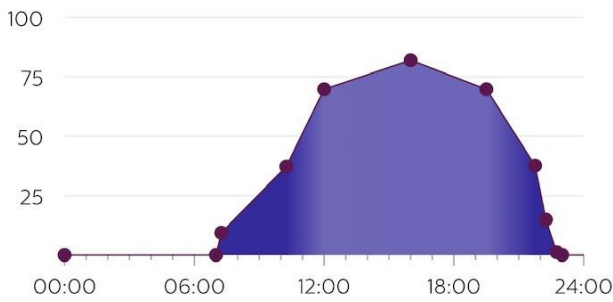






< Home

Basic scheduler



Active schedule

Wesley's reef



Start time

00:00

End time

23:00

Intensity factor

0.82

Acclimatization

Off



Schedule editor

