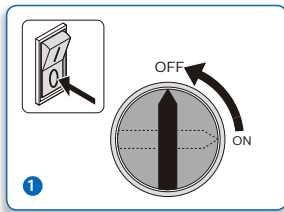
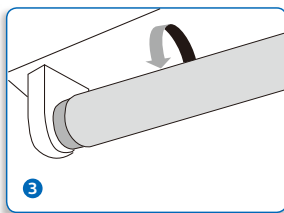
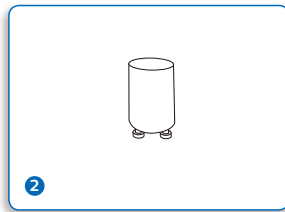


Mounting instructions for LED tubes

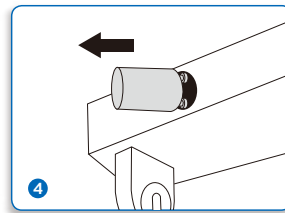
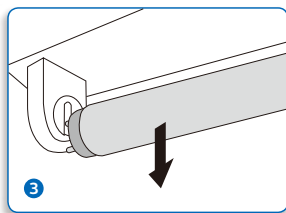
- EM ballast based system



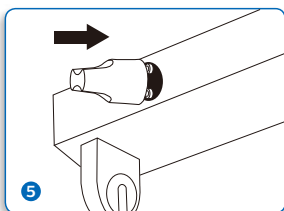
Mains Off



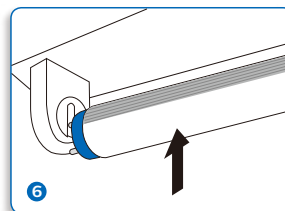
Remove all existing FLUORESCENT TUBES from luminaire



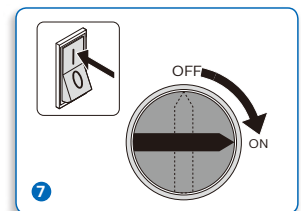
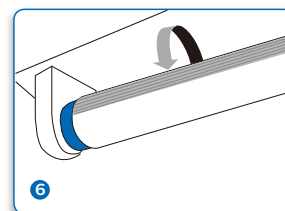
Remove all existing STARTERS from luminaire



Install EMP starter replacement only



Install the LEDtube

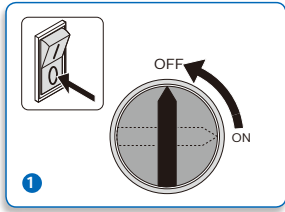


Turn on mains

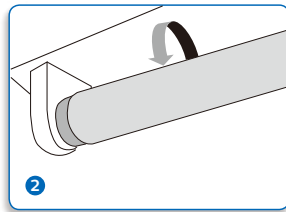
For EM ballast installations please check if a Power Factor Correcting Capacitor is installed in the existing circuit. If yes, please follow the instructions below:

- Please simply remove the capacitor if it is in parallel with the EM Ballast
- In case of 2ft/600mm lamps, if there is only one starter in the luminaire for 2 lamps, or 2 starters for 4 lamps, then rewire according to the SAFE rewiring instructions in next section
- The lamp is made of glass material and therefore not recommended to use in food applications or installations that have to comply with HACCP standards.

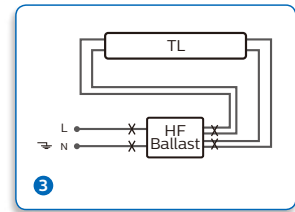
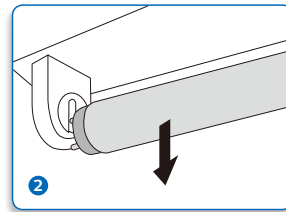
• HF ballast based system



Mains Off

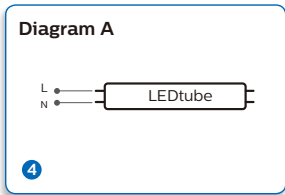


Remove all existing FLUORESCENT TUBES from luminaire

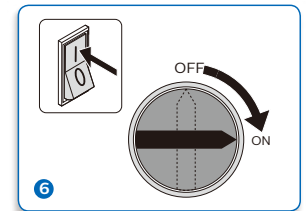
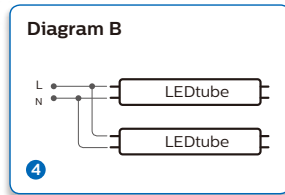


By pass HF

For 3 lamps use diagram A & B



For 4 lamps use diagram B & B



Turn on mains

Bypass existing HF BALLAST and rewire according to the following diagrams. Please check the L/N markings on the lamp end and insert the lamp with AC mains supplied to the corresponding end. To install the lamp in the wrong direction will lead to malfunction.



The supplied warning sticker must be placed on the luminaire and must be visible during lamp replacement

• New built luminaires

Number of tube	Wire according to diagram
1	C
2	D
3	C+D
4	D+D

Please check the L/N markings on the lamp end and insert the lamp with AC mains supplied to the corresponding end. To install the lamp in the wrong direction will lead to malfunction.

