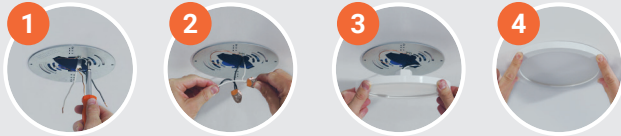


HALO SURFACE MOUNT DOWNLIGHTING

Suitable for a variety of applications!

- Below the ceiling installation with no plates or clips required
- Designed for square, octagon, pancake or round junction boxes
- Ideal for closets, storage areas, attics and basements

Quick and Easy Installation



HALO SURFACE MOUNT DOWNLIGHT Product Selection Guide

Good Better Best



	HLCE	HLS	FM	JBD	SMD	SLD	SMX	
FEATURES/PERFORMANCE	Size / Shape	4", 6" w/ Motion Round	4", 6", 9", 9" w/ Motion Round	8", 11", 15" Round	4" Round, Square	4", 6", 12" Round, Square	4", 6" Round	14", 18" Round, Square
	Trim & Lens	Curved Trim & Lens	Chamfered edge	Full-lensed Flushmount	Interchangeable Flat/Baffle, Round/Square Trims or Full Lens Diffuser	Square-Edge Trim & Flat Lens	Beveled Trim & Flat Low-glare Prismatic Lens	Edgeless Wraparound Trim & Flat Lens
	Max Lumens (By size @ 3000K)	820, 965	945, 1,330	920, 1,250, 1,510	715	740, 790, 2,240	635, 1,300	Lumen Select 1,200/1,600/2,000 1,500/2,000/2,500
	Colour Temperatures (CCT)	5 CCT 27/30/35/40/ 5000K Dedicated: 3000K, 4000K, 5000K	5 CCT 27/30/35/40/ 5000K Dedicated: 3000K, 4000K, 5000K	3 CCT 30/40/5000K, 5 CCT 27/30/35/40/ 5000K	5 CCT 27/30/35/ 40/5000K	5 CCT 27/30/35/ 40/5000K	5 CCT 27/30/35/ 40/5000K	5 CCT 27/30/35/ 40/5000K
CONTROL	Dimming Phase Cut (LE/TE) / 0-10V	10% Phase Cut ¹	10% Phase Cut ¹	10% Phase Cut	5% Phase Cut	5% Phase Cut, 0-10V	5% Phase Cut, 0-10V	5% Phase Cut, 0-10V
	Estimated Life Hours	35,000	35,000	50,000	50,000	50,000	50,000	50,000
	Input Voltage	120V	120V	120V	120V	120V, 120-277V	120V, 120-277V	120V, 120-277V
HARDWARE	Decorative Overlays²	✓			✓	✓	✓	✓

¹ Motion sensing downlights are not dimmable.

² Matte Black, Tuscan Bronze, Satin Nickel, Paintable Matte White.

HLS Disk Lights

SURFACE MOUNT DOWNLIGHTS - 4", 6", & 9"

- Wet-rated ultra-thin disk light with chamfered rim
- 9" motion sensing version available
- Installs in most 3-1/2" or 4" ceiling junction and pancake boxes (or retrofits into housings)
- 5 Colour Field-Selectable in 27/30/35/40/5000K; dedicated in 3000K, 4000K, or 5000K
- Includes LED Downlight, jbox mounting and wiring hardware, and housing retrofit kit
- 10% Dimming (Phase Cut LE/TE), 50,000 hrs, 90+ CRI
- NEW! Decorative overlays are available



Dedicated CCT & Lumens

Catalog Number	Description	Replaces	CCT	Voltage	Lumens	Watts	UPC	Energy Star ID
HLS4079301EWH-6BP	4" Disk Light (6-Pk)	70W	3000K	120V	765	12	080083256662	2401097
HLS6099301EWH-6BP	6" Disc Light (6-Pack)	70W	3000K	120V	925	15.4	080083256785	2401101
HLS6099401EWH-6BP	6" Disc Light (6-Pk)	75W	4000K	120V	945	15.4	080083256808	2401102
HLS9129401EWH	9" Disc Light	75W	4000K	120V	1,295	18	080083256921	2401111
HLSMS9129301EWH	9" Disk Light with Motion Sensor	75W	3000K	120V	1,265	18	080083256969	2401115

FM Full-lensed

FLUSHMOUNTS - 8", 11", & 15"

- LED flushmount installs in most 3-1/2" or 4" junction boxes or retrofits 5" and 6" recessed housings
- Round die-formed lens design with 360-degrees of light distribution
- 3 Colour Field-Selectable in 30/40/5000K (8" fixture) or 5 Colour Field-Selectable in 27/30/35/40/5000K (11" & 15" fixtures)
- Includes LED Downlight, jbox mounting and wiring hardware, and housing retrofit kit
- 10% Dimming (Phase Cut LE/TE), 50,000 hrs, 90+ CRI



Catalog Number	Description	Replaces	Selectable CCT	Voltage	Lumens	Watts	UPC	Energy Star ID
FM89S1EWHR	8" Flushmount	70W	3000K-5000K	120V	920	10	080083256587	2399871
FM119S1EWHR	11" Flushmount	75W	2700K-5000K	120V	1,250	18	080083257706	2399874
FM159S1EWHR	15" Flushmount	100W	2700K-5000K	120V	1,510	14	080083257720	2399877

JBD Slim SURFACE MOUNT DOWNLIGHTS - 4"

- Ultra-thin surface mount downlight with smooth flat lens
- Ceiling or wall mounting in compatible 4" junction boxes or recessed housings
- Interchangeable round, square, and full-lensed designer trims in multiple finishes
- 5 Colour Field-Selectable in 27/30/35/40/5000K
- Includes LED Downlight, jbox mounting and wiring hardware, and housing retrofit kit
- 5% Dimming (Phase Cut LE/TE), 50,000 hrs, 90+ CRI



Catalog Number	Description	Finish	Replaces	Selectable CCT	Voltage	Lumens	Watts	UPC	Energy Star ID
JBD4079FS1EWH	4" Slim Light w/ Matte White Trim	White	65W	2700K-5000K	120V	715	10	080083283514	2567962

Accessories (optional)

Catalog Number	Description	Finish	UPC
JBD4TRMMW	4" Round Flat Trim	Matte White	080083283538
JBD4TRMMB	4" Round Flat Trim	Matte Black	080083283590
JBD4STRMMW	4" Square Flat Trim	Matte White	080083285679
JBD4STRMMB	4" Square Flat Trim	Matte Black	080083285730
JBD4DIFF	4" Full Lens Diffuser	Diffuser	080083283613

Smooth Flat Trims

JBD4TRMMW
Paintable
Matte White

JBD4TRMMB
Matte Black

JBD4TRMSN
Satin Nickel

JBD4TRMTBZ
Tuscan Bronze

JBD4STRMMW
Paintable
Matte White

JBD4STRMMB
Matte Black

JBD4STRMSN
Satin Nickel

JBD4STRMTBZ
Tuscan Bronze

Recessed Baffle Trims

JBD4TRMMWB
Paintable
Matte White

JBD4TRMMBB
Matte Black

JBD4TRMSNB
Satin Nickel

JBD4TRMTBZB
Tuscan Bronze

JBD4STRMMWB
Paintable
Matte White

JBD4STRMMBB
Matte Black

JBD4STRMSNB
Satin Nickel

JBD4STRMTBZB
Tuscan Bronze

JBD4DIFF
Full Lens Diffuser

SMD Square Edge

SURFACE MOUNT DOWNLIGHTS - 4", 6", & 12"

- Round or square surface mount downlight with squared edge design
- Ceiling or wall mounting in compatible junction boxes or retrofit into recessed housings
- 5 Colour Field-Selectable in 27/30/35/40/5000K
- Includes LED Downlight, jbox mounting and wiring hardware, and housing retrofit kit
- 5% Dimming (Phase Cut or 0-10V), 50,000 hrs, 90+ CRI



Catalog Number	Description	Replaces	Selectable CCT	Voltage	Lumens	Watts	UPC	Energy Star ID
SMD4R69SWH-C	4" Surface Mount, Round	65W	2700K-5000K	120V	735	9	080083150045	2365919
SMD6R69SWH-C	6" Surface Mount, Round	65W	2700K-5000K	120V	755	9	080083150083	3417577
SMD12R209SWHE	12" Surface Mount, Round (0-10V)	150W	2700K-5000K	120-277V	2,240	27	080083138005	3417581
SMD14R209SWHE	14" Surface Mount, Round (0-10V)	150W	2700K-5000K	120-277V	2,232	27	080083138401	2388938

SLD Beveled Edge

SURFACE MOUNT DOWNLIGHTS - 4" & 6"

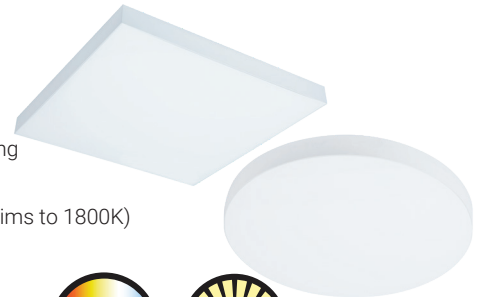
- Low profile surface mount downlight with sleek beveled edge and glare-reducing flat lens
- Ceiling or wall mounting in compatible junction boxes or retrofit into recessed housings
- 5 Colour Field-Selectable in 27/30/35/40/5000K
- Includes LED Downlight and jbox mounting and wiring hardware (6" includes housing retrofit kit)
- 5% Dimming (Phase Cut or 0-10V), 50,000 hrs, 90+ CRI



Catalog Number	Description	Replaces	Selectable CCT	Voltage	Lumens	Watts	UPC	Energy Star ID
SLDSL4069S1EMWR	4" Surface Downlight	60W	2700K-5000K	120V	635	9	080083153107	2366149
SLDSL6069S1EMWR	6" Surface Downlight	60W	2700K-5000K	120V	635	9	080083153121	2366163
SLD6129S1EMWR	6" Surface Downlight	75W	2700K-5000K	120V	1,300	15	080083153145	2373952
SLDACCKIT	4" and 6" SLD Accessory Kit	N/A	N/A	N/A	N/A	N/A	080083159819	2373954

SMX Edgeless SURFACE MOUNT DOWNLIGHTS - 14" & 18"

- A bright fully luminous lens face and sleek edgeless design blends effortlessly into any ceiling
- Ceiling or wall mounting in compatible junction boxes or recessed housings
- 6-Position Switch: 5 Colour Field-Selectable (27/30/35/40/5000K) + Dim-to-Warm (3000K dims to 1800K)
- Includes j-box mounting and wiring hardware
- 5% Dimming (Phase Cut or 0-10V), 50,000 hrs, 90+ CRI



Catalog Number	Description	Replaces	Selectable CCT	Voltage	Selectable Lumens	Watts	UPC
SMX14RLSFSD2W	14" Surface Mount, Round	90-150W	2700K-5000K + D2W	120V	1200/1600/2000	16/21/26	080083292141
SMX14RLSFS010	14" Surface Mount, Round (0-10V)	90-150W	2700K-5000K + D2W	120-277V	1200/1600/2000	16/21/26	080083292424
SMX18RLSFSD2W	18" Surface Mount, Round	90-150W	2700K-5000K + D2W	120V	1500/2000/2500	17/24/30	080083292165
SMX18RLSFS010	18" Surface Mount, Round (0-10V)	90-150W	2700K-5000K + D2W	120-277V	1500/2000/2500	17/24/30	080083292448

Catalog Number	Description	UPC
SMX14RTRMMB	14" Round Decorative Overlay Matte Black	080083293742
SMX18RTRMMB	18" Round Decorative Overlay Matte Black	080083293766

