



MARKETPRO

Stock Lighting Solutions



STOCK PRODUCT GUIDE

Lighting & Controls

HALO

METALUX

GREENGATE

WAVELINX

LUMARK



Commercial

Industrial

Residential

2025

VOL. 1



COOPER
Lighting Solutions

a **signify** business

At Cooper Lighting Solutions, we deliver industry-leading indoor and outdoor lighting products, lighting controls, smart lighting systems, programs and services.



VISIT OUR
MARKETPRO
WEBSITE

Your one-stop shop for tools
and resources designed to
help grow your business

- ✓ Product Guide
- ✓ E-Commerce Tools
- ✓ Find Utility Rebates
- ✓ Sample Before You Buy
- ✓ Marketing & Training

READILY-AVAILABLE SOLUTIONS FROM OUR TRUSTED BRANDS

The MarketPro program provides our customers with top selling lighting and controls products from industry-preferred brands for their trusted performance, reliability and quality. These products are in-stock and ready to ship to meet your project needs.



In-Stock

Our essential products are in stock and readily-available to ship



Top Brands

Trusted products from HALO, Metalux, Greengate and Lumark



Proven Best Sellers

Contractor preferred top selling lighting and controls products



Sample Before You Buy

Try new products risk free



Innovation

State-of-the-art product innovation, direct mount installation, selectable technology and integrated controls



Utility Incentives

Products qualify for ENERGY STAR® and DLC®, saving money and adding value



Quick Solutions

Easily access our most popular, readily available products through our Quick Spec program



Training & Education

Online and instructor-led classes to expand your lighting and controls knowledge



Visit the MarketPro website to download the product guide

OUR BRANDS AND THE MARKETS WE SERVE



RESIDENTIAL

Residential lighting fixtures for single and multi-family construction and remodel projects.



COMMERCIAL

Lighting and control solutions for healthcare, education, hospitality, retail and office.



INDUSTRIAL

Lighting and control solutions for warehouses, distribution centers and logistic facilities.



OUTDOOR

Lighting that provides easy installation, area safety, and energy savings in commercial and industrial spaces.

We deliver a range of innovative and reliable indoor and outdoor lighting and controls product solutions specifically designed to maximize performance, energy efficiency and cost savings.

- 8 | **HALO**
Recessed & Surface Downlights
- 28 | **METALUX**
Ambient Commercial & Industrial
- 40 | **CONNECTED LIGHTING & CONTROLS**
WaveLinx LITE
WaveLinx CAT
Greengate
- 48 | **LUMARK, LUMARK AP & HALO OUTDOOR**
Outdoor Commercial & Industrial

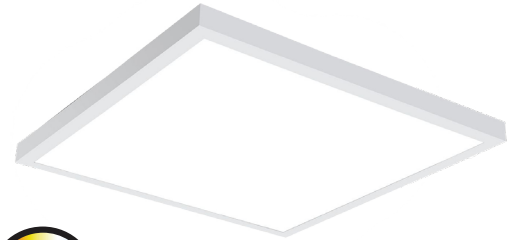
PRODUCT SPOTLIGHT

At Cooper Lighting Solutions, we build forward-thinking lighting solutions that make people's lives safer, while making buildings, homes, and cities smarter and more sustainable. Learn about our latest lighting solutions and new MarketPro products.

▶ METALUX MMS Multi-Mount Selectable Panel

MMS is a versatile selectable panel that can mount directly to the ceiling or wall without the cost and labor of a surface mount kit. In addition, it can be recessed or suspended (with kit) to make it the "go to" panel for any mounting requirement.

PAGE 29



▶ HALO RL & RA Smart Wi-Fi® Baffle Canless Downlights

The RL and RA Smart LED Baffle Canless Downlights with WiZ Pro allows users to effortlessly illuminate their space with 16 million colours and white tuning through the WiZ app.

Page 25



▶ HALO SMX EDGELESS SURFACE MOUNT DOWNLIGHT 14" & 18"

The SMX series redefines the surface downlighting experience. With a fully luminous lens face, this series provides exceptional light quality with a sleek, edgeless design that blends effortlessly into any ceiling.

Page 21



SELECTABLE TECHNOLOGY

Multiple Light Choices, One Fixture.

Explore **125+**
selectable products
from HALO, Metalux
and Lumark

Field-Selectable technology empowers you to take control. Go selectable to choose your way, every time. Adjust colour temperatures (CCT) and lumen outputs with the flip of a switch!



SELECTABLE COLOURS (CCT)

Choose from a wide range of colour temperatures to set the ideal lighting scene.



SELECTABLE LUMENS

Select between the preset lumen outputs to create your optimal lighting experience.

For details visit:

cooperlighting.com/marketpro/canada to download the latest MarketPro Canada Stock Product Guide to find our selection of selectable lighting products.

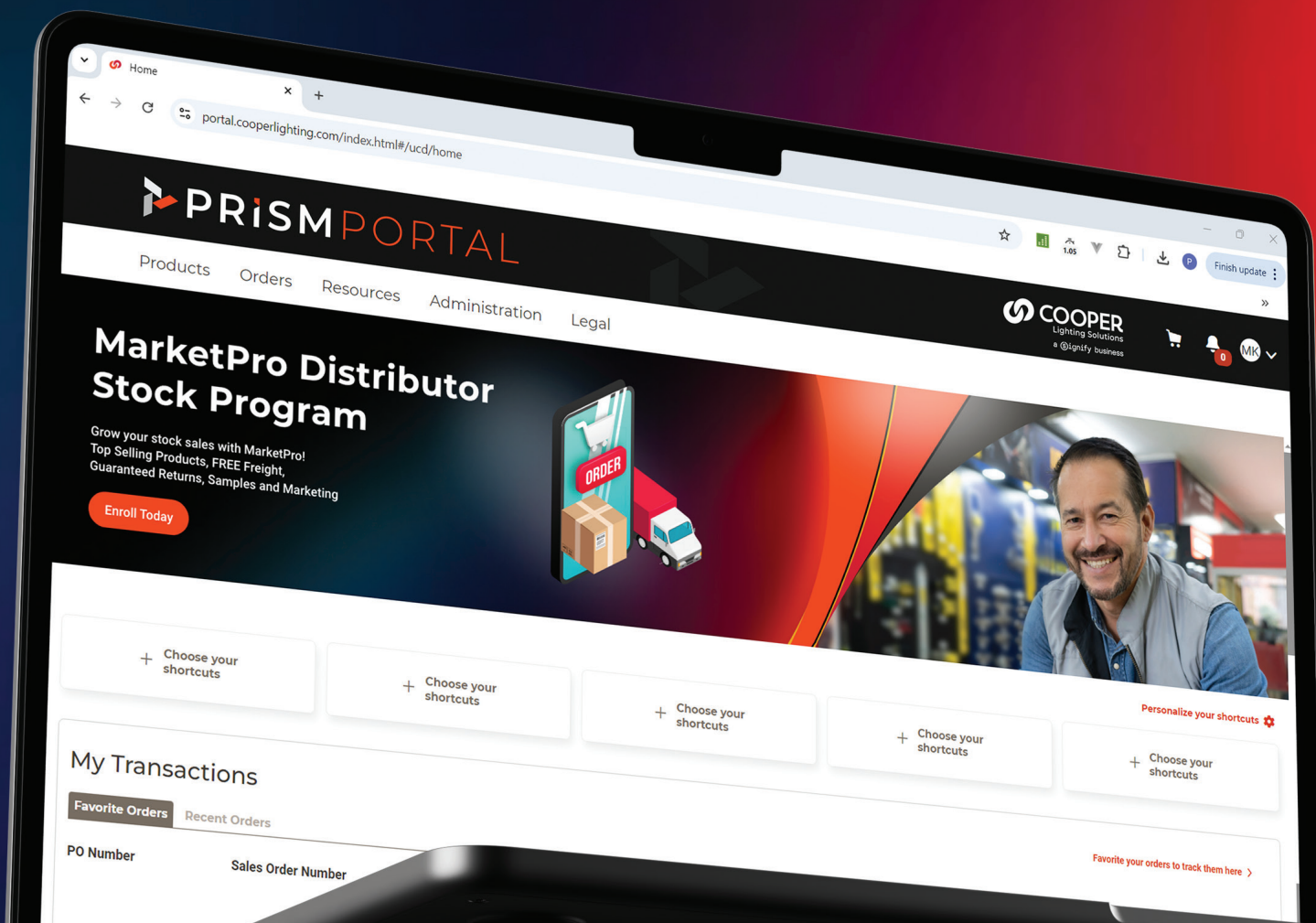
PRISM PORTAL

Our Central Hub for Distributor Business.

Cooper Lighting Solutions PRISM Portal is a digital hub for authorized partners to self-serve reliable product data, place orders, and manage orders. It offers hassle-free access to price and availability, spec sheets, order tracking, invoices, and more!

- **Advanced Product Search at Your Fingertips**
- **Real-Time Pricing & Availability**
- **Seamless Online Order Entry**
- **Comprehensive Order Status Tracking**

CLICK HERE to register
for PRISM Portal



Explore the PRISM Portal for Streamlined Business Solutions.



Canless
Downlighting
p. 9-15



Surface Mount
Downlighting
p. 17-21



Recessed LED and
Traditional Trims
p. 22-24



Recessed
Housing
p. 25



Smart Wi-Fi
Lighting
p. 26



Commercial
Downlighting
p. 27-28

HALO®

HALO is the industry leader in high-quality recessed downlighting, offering the widest selection of innovative and flexible solutions for your application needs.

GO CANLESS! Installs Virtually Anywhere!

- Field-Selectable colour temperatures
- Mounts to drywall or suspended ceilings (no housing required)
- Remote driver/junction box included
- Rated for insulation contact (IC) & non-IC ceilings

Quick and Easy Installation



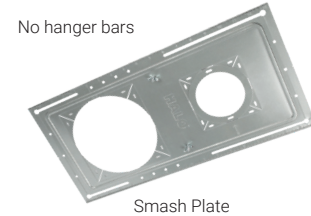
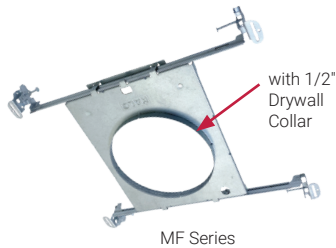
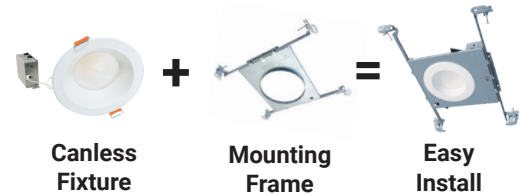
MORE FLEXIBILITY!
SAVE TIME AND MONEY!
NO HOUSING NEEDED!



New Construction Mounting Frames and Smash Plate

For Installing Canless Downlights in New Construction

- Use HALO Mounting Frames/Smash Plates on your next new construction project
- Toolless thumbscrews hold remote driver/jbox to the frame during rough in
- **MF Series** - 4" & 6" rounds with 1/2" drywall collar
- **HL Series** - 4" & 6" rounds that convert to squares with corner knockouts
- **Smash Plate** - Our most cost-effective single frame solution that can fit 3", 4", or 6" HALO Canless Fixtures (convert 4" or 6" openings to squares with corner knockouts)



Catalog Number	Description	UPC
MF4RC	4" Round Mounting Frame with 1/2" Drywall Collar	080083268009
MF6RC	6" Round Mounting Frame with 1/2" Drywall Collar	080083268023
HL4RSMF	4" Round/Square Mounting Frame	080083876167
HL6RSMF	6" Round/Square Canless Mounting Frame	080083876181
SP346RS	3"/4"/6" Round/Square Smash Plate	080083288236

SLIM CANLESS DOWNLIGHT Product Selection Guide

Good
Better
Best

	HLBE & HLBSL	HLBPH	HLB	HLBC/HLBC+	
FEATURES/PERFORMANCE	Slim 1/2" Thin	✓	✓	✓	✓
	Size / Shape	4", 6" Round	4", 6" Round	3", 4", 6", 8", 12" Round, Square	4", 6" Round, Square ¹
	Lens	Smooth	Smooth	Low-glare Prismatic	Regresse, Low-glare Prismatic
	Max Lumens (By size @ 3000K)	745, 1,025	805, 1,015	595, 790, 1,020, 2,350, 2,300	975, 1,270 (Lumen Select, Dedicated)
	Colour Temperatures (CCT)	3 CCT 27/30/3500K 30/40/5000K, Dedicated: 3000K	5 CCT 27/30/35/40/5000K	5 CCT 27/30/35/40/5000K	5 CCT w/ D2W D2W/27/30/35/40/5000K
CONTROL	Dimming	10% Phase Cut	5% Phase Cut	5% Phase Cut, 0-10V ²	5% Phase Cut, 0-10V
	Estimated Life Hours	35,000	50,000	50,000	50,000
	Input Voltage	120V	120V	120V, 120-277V	120V, 120-277V
ACCESSORIES	Fits Mounting Frames	✓	✓	✓	✓
	Decorative Overlays³	✓	✓	✓	✓ ¹
	Slide-in-Side™ Wire Traps⁴		✓	✓	✓
	Mounting Bar	✓ ⁵	✓	✓	✓

¹ Overlay Trims sold separately. ² Available in QuickLink Low Voltage (Phase Cut or 0-10V) or Smart Wi-Fi® Connected by WiZ Pro versions. ³ Matte Black, Tuscan Bronze, Satin Nickel, Paintable Matte White. ⁴ Slide-N-Side wire traps eliminate the need to use knockouts in most instances. Pre-wire outside of the jbox, fold down the tab(s), and insert non-metallic sheathed cable into the Slide-N-Side strain relief. ⁵ Mounting Bars are included with HLBSL but are sold separately for the HLBE Bulk Packs (HLBEMOUNT-12PK).

HLBSL Slim CANLESS LED DOWNLIGHTS - 4" & 6"

- Matches the HLBPH with simplified features for budget-conscious installers
- Suitable for installation in IC (insulation contact) and non-IC applications
- Available in 5 Colour Field-Selectable in 27/30/35/40/5000K; 90+CRI
- Includes LED downlight and remote driver/junction box
- 10% Phase Cut (LE/TE) Dimming, 35,000 hrs
- Slim polymer dead front trim with smooth lens



Selectable CCT

Catalog Number	Description	Replaces	CCT	Voltage	Lumens	Watts	UPC	Energy Star ID
HLBSL406FS5	4" Round LED Direct Mount	65W	2700K-5000K	120V	600	8.5	080083297221	3543535
HLBSL406FS5-12PK	4" Round LED Direct Mount, 12 Pack	65W	2700K-5000K	120V	600	8.5	080083302109	3543535
HLBSL609FS5	6" Round LED Direct Mount	65W	2700K-5000K	120V	900	10	080083297245	3543537
HLBSL609FS5-12PK	6" Round LED Direct Mount, 12 Pack	65W	2700K-5000K	120V	900	10	080083302123	3543537

HLBPH Slim CANLESS DOWNLIGHTS - 4" & 6"

- An ultra-thin flange and sleek 1/2"-thin downlight design that fits under any obstruction
- Dead-front trim & smooth lens
- 5 Color Field-Selectable in 27/30/35/40/5000K
- Includes LED downlight and remote driver/junction box
- 5% Dimming (Phase Cut or 0-10V), 50,000 hrs, 90+ CRI



Catalog Number	Description	Replaces	Selectable CCT	Voltage	Lumens	Watts	UPC	Energy Star ID
HLBPH4069FS1EMWR-C	4" Downlight, Round	65W	2700K-5000K	120V	805	10	080083252398	2385132
HLBPH6099FS1EMWR-C	6" Downlight, Round	70W	2700K-5000K	120V	1,015	14	080083253517	2385133

HLB Slim CANLESS DOWNLIGHTS - 3", 4", 6", 8" & 12"

- An ultra-thin flange and sleek 1/2"-thin downlight design that fits under any obstruction
- Die-cast trim & low-glare prismatic lens
- 5 Colour Field-Selectable in 27/30/35/40/5000K
- Includes LED downlight and remote driver/junction box with mounting bar
- 5% Dimming (Phase Cut or 0-10V), 50,000 hrs, 90+ CRI



Catalog Number	Description	Replaces	Selectable CCT	Voltage	Lumens	Watts	UPC	Energy Star ID
HLB4LSFS5-C	4" Downlight, Round	65W	2700K-5000K	120V	700/850/100 (Lumen Select)	12	080083297344	3706760
HLB6LSFS5-C	6" Downlight, Round	65W	2700K-5000K	120V	800/1000/1200 (Lumen Select)	14	080083297368	3706764
HLB6099FSE010MWR	6" Downlight, Round (0-10V)	70W	2700K-5000K	120-277V	1,060	15	080083912285	2351377
HLB8169FS1EMWR	8" Downlight, Round	100W	2700K-5000K	120V	1761	21	080083150601	2358047
HLB8LS9FSE010MWR	8" Downlight, Round (0-10V)	90-150W	2700K-5000K	120-277V	1,400/1,900/2,400 (Lumen Select)	17/25/32	080083083367	2358045

Accessories (optional)

Catalog Number	Description	Finish	UPC
HLB4RTRMMB	4" Round HLB Trim	Matte Black	080083268375
HLB6RTRMMB	6" Round HLB Trim	Matte Black	080083268412



HLB4RTRMMB



HLB4RTRMMW



HLB4RTRMSN



HLB4RTRMTBZ

CANLESS DOWNLIGHT Product Selection Guide

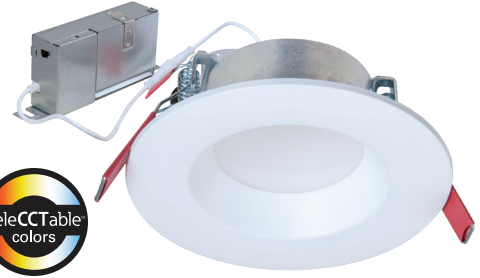


		DOWNLIGHTS			ADJUSTABLES		
		LT-DM	CJB/CJB+	RL-DM, RLFR, RL-DM Night Light	HLA	RA-DM	RL-Slope
FEATURES / PERFORMANCE	Fixture Types	Downlights	Slim Downlight with Attached Jbox + 2-in-1 Canless-to-Can Versions Available	Recessed Downlights, Fire Rated Downlight, & Downlight + Night Light	Gimbal Adjustables (30° Tilt/360° Rotation)	Gimbal Adjustables (35° Tilt/360° Rotation)	Regressed Slope Adjustable (9-45° Tilt)
	Sizes (Round)	3", 4", 6"	4", 6"	4", 6"	3", 4"	4", 6"	4", 6"
	Trim & Lens	Baffle or Smooth Trim w/ Flat Lens	Slim Trim w/ Flat Smooth Lens	Baffle Trim w/ Curved Lens (NL has Transparent Trim)	Low-glare Prismatic or Smooth Lens	Baffle Trim w/ Flat Lens	Deep Baffle Trim w/ Integrated Optic
	Max Lumens (By size @ 3000K)	570, 645, 785	745, 920	955, 1,300 (Lumen Select, Dedicated) (NL: 780, 1,020)	710	790, 775	960, 1,630
	Colour Temperatures (CCT)	5 CCT 27/30/35/40/5000K Dedicated: 3000K	5 CCT 27/30/35/40/5000K	5 CCT w/ D2W D2W/27/30/35/40/5000K (NL: 2000K)	5 CCT 27/30/35/40/5000K	5 CCT 27/30/35/40/5000K	5 CCT 27/30/35/40/5000K
CONTROL	Dimming Phase Cut (LE/TE)/0-10V	10% Phase Cut ¹	10% Phase Cut ¹	5% Phase Cut, 0-10V ² , ³ (NL: 5% Phase Cut - Both zones)	5% Phase Cut	5% Phase Cut ³	5% Phase Cut
	Estimated Life Hours	35,000	35,000	70,000 (RL & NL: 50,000)	50,000	50,000	50,000
	Input Voltage	120V	120V	120V	120V	120V	120V
HARDWARE	Fits Mounting Frames/Smash Plate	✓	✓	✓	✓	✓	✓
	Decorative Overlays ⁴	✓		✓ (RL-DM only)	✓		
	Slide-in-Side™ Wire Traps ⁵			✓	✓	✓	✓
	Mounting Bar	✓		✓	✓	✓	✓

¹ LT-DMs are also available in QuickLink Low Voltage (Phase Cut) versions. ² Available in QuickLink Low Voltage (0-10V) versions. ³ Available in Smart Wi-Fi® Connected by WIZ Pro versions. ⁴ Matte Black, Tuscan Bronze, Satin Nickel, Paintable Matte White. ⁵ Slide-N-Side wire traps eliminate the need to remove knockouts. Pre-wire outside of the j-box, fold down the tab, and insert non-metallic sheathed cable into the Slide-N-Side strain relief

LT-DM Recessed Baffle & Smooth Splay Trim CANLESS DOWNLIGHTS - 3", 4", & 6"

- Closely mirrors the RL-DM design with simplified features for maximum savings
- Dead-front plastic trim in either baffle or smooth splay and flat lens
- 5 Colour Field-Selectable in 27/30/35/40/5000K
- Includes LED downlight and remote driver/junction box with mounting bar
- 10% Dimming (Phase Cut LE/TE), 35,000 hrs, 90+ CRI



Catalog Number	Description	Replaces	Selectable CCT	Voltage	Lumens	Watts	UPC	Energy Star ID
LTC305FSSB	3" Baffle	60W	2700K-5000K	120V	550	6	080083297047	3557102
LTC406FSSB	4" Baffle	60W	2700K-5000K	120V	650	7.2	080083297061	3557103
LTC608FSSB	6" Baffle	60W	2700K-5000K	120V	750	8.5	080083297085	3557105

Accessories (optional)

Catalog Number	Description	Finish	UPC
LT30MW	3" Smooth Splay Overlay	Matte White	080083297528
LT40MW	4" Smooth Splay Overlay	Matte White	080083297542
LT60MW	6" Smooth Splay Overlay	Matte White	080083297566

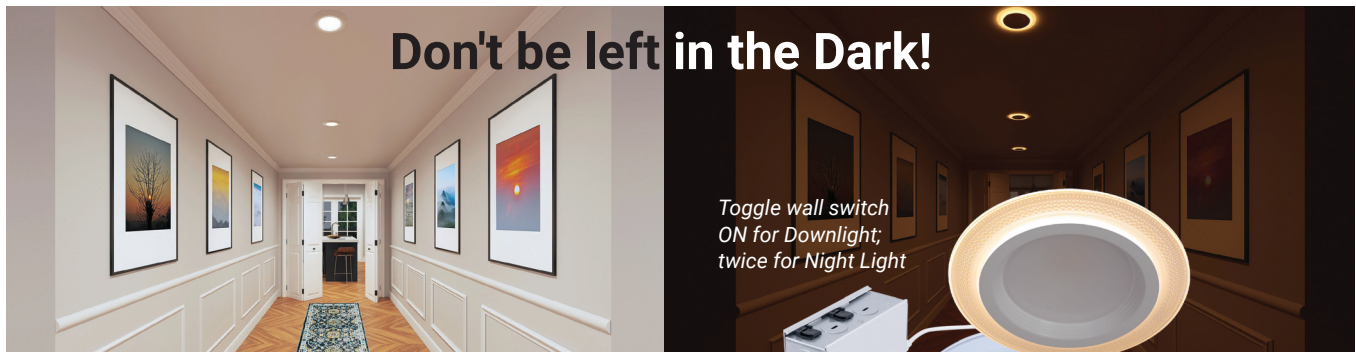


RL-DM Recessed Baffle Trim CANLESS DOWNLIGHTS - 4" & 6"

- The perfect balance of value and visual comfort, available as a canless direct mount
- Die-cast aluminum baffle trim with curved lens and selectable lumen options
- 6-Position Switch: 5 Colour Field-Selectable (27/30/35/40/5000K) + Dim-to-Warm (3000K dims to 1800K)
- LED downlight with remote driver/junction box
- 5% Phase Cut (LE/TE) Dimming, 70,000 hrs, 90+ CRI



Catalog Number	Description	Replaces	Selectable CCT	Voltage	Lumens	Watts	UPC	Energy Star ID
RL4LS9FSD2W1EWHDM-C	4" Baffle Downlight	60-70W	2700K-5000K+D2W	120V	600/900	7.5/11.5	080083259045	2403141
RL6069FSD2W1EWHDM-C	6" Baffle Downlight	60W	2700K-5000K+D2W	120V	750 (Dedicated)	7	080083259106	2402947
RL6LS9FSD2W1EWHDM-C	6" Baffle Downlight	70-75W	2700K-5000K+D2W	120V	900/1,200	10/14	080083259120	2403144



RL-DM/RL Night Light CANLESS DOWNLIGHTS & RECESSED LED TRIMS - 4" & 6"

- 2 Modes: Downlight for general illumination and Night Light with gentle glow (2000K)
- Dead-front plastic trim with smooth splay and curved lens
- 6-Position Switch: 5 Colour Field-Selectable (27/30/35/40/5000K) + Dim-to-Warm (3000K dims to 1800K); Night Light CCT: Warm glow 2000K
- 5% Dimming (Phase Cut LE/TE), 70,000 hrs, 90+ CRI



Canless LED Downlights



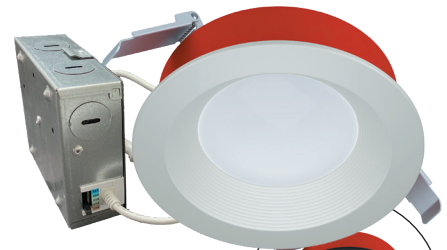
Recessed LED Trims

Canless LED Downlights with remote/driver/junction box

Catalog Number	Description	Replaces	Selectable CCT	Voltage	Lumens	Watts	UPC	Energy Star ID
RLNL4079FSD2W1EWHDM	4" Night Light + Downlight	65W	2700K-5000K + D2W + Night Light (2000K)	120V	780	9	080083265039	2403400
RLNL6109FSD2W1EWHDM	6" Night Light + Downlight	70W	2700K-5000K + D2W+ Night Light (2000K)	120V	1,020	12	080083265053	2403403

RLFR Fire-rated Recessed Baffle Trim CANLESS DOWNLIGHTS - 4" & 6"

- Prevent the passage of flames & toxic gases for up to 2 hours
- Die-cast aluminum baffle trim and curved lens
- 5 Colour Field-Selectable in 27/30/35/40/5000K
- Includes LED downlight and remote driver/junction box with mounting bar
- 5% Dimming (Phase Cut LE/TE), 50,000 hrs, 90+ CRI



Available in black

Catalog Number	Description	Finish	Replaces	Selectable CCT	Voltage	Lumens	Watts	UPC	Energy Star ID
RLFRC4FS	4" Fire Rated Baffle Downlight, white	White	70W	2700K-5000K	120V	1,000	11	080083295838	3549872
RLFRC6FS	6" Fire Rated Baffle Downlight, white	White	75W	2700K-5000K	120V	1,400	13	080083295852	3549873

RLS Slope Recessed Baffle Trim Adjustable CANLESS DOWNLIGHTS - 4" & 6"

- Tilt the adjustment mechanism from 9° to 45° to match ceiling pitches from 2/12 to 12/12
- Better lighting and improved visual comfort with its integrated optic and regressed light engine
- 5 Colour Field-Selectable in 27/30/35/40/5000K
- Includes LED downlight and remote driver/junction box with mounting bar
- 5% Dimming (Phase Cut LE/TE), 50,000 hrs, 90+ CRI



Catalog Number	Description	Replaces	Selectable CCT	Voltage	Lumens	Watts	UPC	Energy Star ID
RLS4099FS1EWHDMR-C	4" Slope Ceiling Recessed Downlight, white	70W	2700K-5000K	120V	960	11	080083253531	2382794
RLS6159FS1EWHDMR-C	6" Slope Ceiling Recessed Downlight, white	150W	2700K-5000K	120V	1,630	19	080083253555	2382795

LCR Light Commercial Downlight CANLESS DOWNLIGHTS

- Light commercial LED downlight in 2, 4, 6 and 8-inch sizes
- Installs into drywall/suspended ceiling (no j-box or housing required)
- 5 field-selectable CCT: 2700K, 3000K, 3500K, 4000K, 5000K; 90 CRI
- Regressed lens and smooth baffle provide high optical cutoff
- Wide distribution pattern is ideal for general area illumination; Airtight
- 120-277V input, 0-10V dimming to 5%



Catalog Number	Description	Replaces	Selectable CCT	Voltage	Lumens	Watts	UPC	Energy Star ID
LCR208RD9FSE020	2" LCR Direct Mount, White	65W	2700K-6500K	120-277V	800	10	080083259144	2405806
LCR408RD9FSE020	4" LCR Direct Mount, White	65W	2700K-6500K	120-277V	800	10.7	080083261505	2405430
LCR412RD9FSE020	4" LCR Direct Mount, White	75W	2700K-6500K	120-277V	1200	14.5	080083261567	2405436
LCR615RD9FSE020	6" LCR Direct Mount, White	75W	2700K-6500K	120-277V	1500	17.7	080083261628	2405442
LCR621RD9FSE020	6" LCR Direct Mount, White	150W, 2-26W CFL	2700K-6500K	120-277V	2100	23	080083261680	2405603
LCR630RD9FSE010	6" LCR Direct Mount, White	150W, 2-26W CFL	2700K-6500K	120-277V	3000	32.4	080083261741	2405609

Accessories (optional)

Catalog Number	Description	UPC
LCR6TRMSC	6" Accessory Skin, Specular	080083890361

Source Lighting Education Center

The benchmark for lighting educational facilities and programs for 30 years.



Expand Your Knowledge!

The SOURCE is an excellent resource for training and professional development.

As the industry's leading lighting educational facility, the SOURCE offers numerous online and instructor-led courses and workshops for those wanting to expand their lighting and controls knowledge.



- ▶ Instructor-led Classes
- ▶ Free Online Courses
- ▶ Continuing Education
- ▶ reSource Articles

To start learning today, visit:

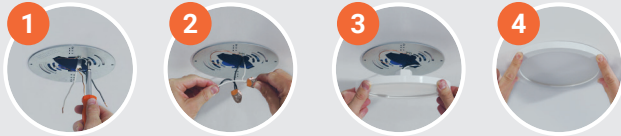
cooperlighting.com/global/resources/source-lighting-education

HALO SURFACE MOUNT DOWNLIGHTING

Suitable for a variety of applications!

- Below the ceiling installation with no plates or clips required
- Designed for square, octagon, pancake or round junction boxes
- Ideal for closets, storage areas, attics and basements

Quick and Easy Installation



HALO SURFACE MOUNT DOWNLIGHT Product Selection Guide

Good Better Best



	HLCE	HLS	FM	JBD	SMD	SLD	SMX	
FEATURES/PERFORMANCE	Size / Shape	4", 6" w/ Motion Round	4", 6", 9", 9" w/ Motion Round	8", 11", 15" Round	4" Round, Square	4", 6", 12" Round, Square	4", 6" Round	14", 18" Round, Square
	Trim & Lens	Curved Trim & Lens	Chamfered edge	Full-lensed Flushmount	Interchangeable Flat/Baffle, Round/Square Trims or Full Lens Diffuser	Square-Edge Trim & Flat Lens	Beveled Trim & Flat Low-glare Prismatic Lens	Edgeless Wraparound Trim & Flat Lens
	Max Lumens (By size @ 3000K)	820, 965	945, 1,330	920, 1,250, 1,510	715	740, 790, 2,240	635, 1,300	Lumen Select 1,200/1,600/2,000 1,500/2,000/2,500
	Colour Temperatures (CCT)	5 CCT 27/30/35/40/ 5000K Dedicated: 3000K, 4000K, 5000K	5 CCT 27/30/35/40/ 5000K Dedicated: 3000K, 4000K, 5000K	3 CCT 30/40/5000K, 5 CCT 27/30/35/40/ 5000K	5 CCT 27/30/35/ 40/5000K	5 CCT 27/30/35/ 40/5000K	5 CCT 27/30/35/ 40/5000K	5 CCT 27/30/35/ 40/5000K
CONTROL	Dimming Phase Cut (LE/TE) / 0-10V	10% Phase Cut ¹	10% Phase Cut ¹	10% Phase Cut	5% Phase Cut	5% Phase Cut, 0-10V	5% Phase Cut, 0-10V	5% Phase Cut, 0-10V
	Estimated Life Hours	35,000	35,000	50,000	50,000	50,000	50,000	50,000
	Input Voltage	120V	120V	120V	120V	120V, 120-277V	120V, 120-277V	120V, 120-277V
HARDWARE	Decorative Overlays²	✓			✓	✓	✓	✓

¹ Motion sensing downlights are not dimmable.

² Matte Black, Tuscan Bronze, Satin Nickel, Paintable Matte White.

HLS Disk Lights

SURFACE MOUNT DOWNLIGHTS - 4", 6", & 9"

- Wet-rated ultra-thin disk light with chamfered rim
- 9" motion sensing version available
- Installs in most 3-1/2" or 4" ceiling junction and pancake boxes (or retrofits into housings)
- 5 Colour Field-Selectable in 27/30/35/40/5000K; dedicated in 3000K, 4000K, or 5000K
- Includes LED Downlight, jbox mounting and wiring hardware, and housing retrofit kit
- 10% Dimming (Phase Cut LE/TE), 50,000 hrs, 90+ CRI
- NEW! Decorative overlays are available



Dedicated CCT & Lumens

Catalog Number	Description	Replaces	CCT	Voltage	Lumens	Watts	UPC	Energy Star ID
HLS4079301EWH-6BP	4" Disk Light (6-Pk)	70W	3000K	120V	765	12	080083256662	2401097
HLS6099301EWH-6BP	6" Disc Light (6-Pack)	70W	3000K	120V	925	15.4	080083256785	2401101
HLS6099401EWH-6BP	6" Disc Light (6-Pk)	75W	4000K	120V	945	15.4	080083256808	2401102
HLS9129401EWH	9" Disc Light	75W	4000K	120V	1,295	18	080083256921	2401111
HLSMS9129301EWH	9" Disk Light with Motion Sensor	75W	3000K	120V	1,265	18	080083256969	2401115

FM Full-lensed

FLUSHMOUNTS - 8", 11", & 15"

- LED flushmount installs in most 3-1/2" or 4" junction boxes or retrofits 5" and 6" recessed housings
- Round die-formed lens design with 360-degrees of light distribution
- 3 Colour Field-Selectable in 30/40/5000K (8" fixture) or 5 Colour Field-Selectable in 27/30/35/40/5000K (11" & 15" fixtures)
- Includes LED Downlight, jbox mounting and wiring hardware, and housing retrofit kit
- 10% Dimming (Phase Cut LE/TE), 50,000 hrs, 90+ CRI



Catalog Number	Description	Replaces	Selectable CCT	Voltage	Lumens	Watts	UPC	Energy Star ID
FM89S1EWHR	8" Flushmount	70W	3000K-5000K	120V	920	10	080083256587	2399871
FM119S1EWHR	11" Flushmount	75W	2700K-5000K	120V	1,250	18	080083257706	2399874
FM159S1EWHR	15" Flushmount	100W	2700K-5000K	120V	1,510	14	080083257720	2399877

JBD Slim SURFACE MOUNT DOWNLIGHTS - 4"

- Ultra-thin surface mount downlight with smooth flat lens
- Ceiling or wall mounting in compatible 4" junction boxes or recessed housings
- Interchangeable round, square, and full-lensed designer trims in multiple finishes
- 5 Colour Field-Selectable in 27/30/35/40/5000K
- Includes LED Downlight, jbox mounting and wiring hardware, and housing retrofit kit
- 5% Dimming (Phase Cut LE/TE), 50,000 hrs, 90+ CRI



Catalog Number	Description	Finish	Replaces	Selectable CCT	Voltage	Lumens	Watts	UPC	Energy Star ID
JBD4079FS1EWH	4" Slim Light w/ Matte White Trim	White	65W	2700K-5000K	120V	715	10	080083283514	2567962

Accessories (optional)

Catalog Number	Description	Finish	UPC
JBD4TRMMW	4" Round Flat Trim	Matte White	080083283538
JBD4TRMMB	4" Round Flat Trim	Matte Black	080083283590
JBD4STRMMW	4" Square Flat Trim	Matte White	080083285679
JBD4STRMMB	4" Square Flat Trim	Matte Black	080083285730
JBD4DIFF	4" Full Lens Diffuser	Diffuser	080083283613

Smooth Flat Trims

JBD4TRMMW
Paintable
Matte White

JBD4TRMMB
Matte Black

JBD4TRMSN
Satin Nickel

JBD4TRMTBZ
Tuscan Bronze

JBD4STRMMW
Paintable
Matte White

JBD4STRMMB
Matte Black

JBD4STRMSN
Satin Nickel

JBD4STRMTBZ
Tuscan Bronze

Recessed Baffle Trims

JBD4TRMMWB
Paintable
Matte White

JBD4TRMMBB
Matte Black

JBD4TRMSNB
Satin Nickel

JBD4TRMTBZB
Tuscan Bronze

JBD4STRMMWB
Paintable
Matte White

JBD4STRMMBB
Matte Black

JBD4STRMSNB
Satin Nickel

JBD4STRMTBZB
Tuscan Bronze

JBD4DIFF
Full Lens Diffuser

SMD Square Edge

SURFACE MOUNT DOWNLIGHTS - 4", 6", & 12"

- Round or square surface mount downlight with squared edge design
- Ceiling or wall mounting in compatible junction boxes or retrofit into recessed housings
- 5 Colour Field-Selectable in 27/30/35/40/5000K
- Includes LED Downlight, jbox mounting and wiring hardware, and housing retrofit kit
- 5% Dimming (Phase Cut or 0-10V), 50,000 hrs, 90+ CRI



Catalog Number	Description	Replaces	Selectable CCT	Voltage	Lumens	Watts	UPC	Energy Star ID
SMD4R69SWH-C	4" Surface Mount, Round	65W	2700K-5000K	120V	735	9	080083150045	2365919
SMD6R69SWH-C	6" Surface Mount, Round	65W	2700K-5000K	120V	755	9	080083150083	3417577
SMD12R209SWHE	12" Surface Mount, Round (0-10V)	150W	2700K-5000K	120-277V	2,240	27	080083138005	3417581
SMD14R209SWHE	14" Surface Mount, Round (0-10V)	150W	2700K-5000K	120-277V	2,232	27	080083138401	2388938

SLD Beveled Edge

SURFACE MOUNT DOWNLIGHTS - 4" & 6"

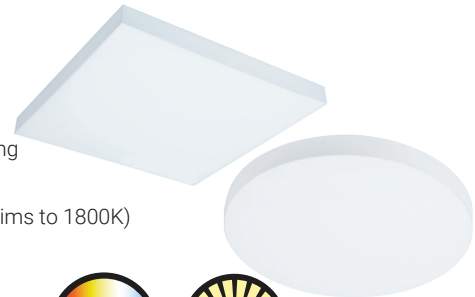
- Low profile surface mount downlight with sleek beveled edge and glare-reducing flat lens
- Ceiling or wall mounting in compatible junction boxes or retrofit into recessed housings
- 5 Colour Field-Selectable in 27/30/35/40/5000K
- Includes LED Downlight and jbox mounting and wiring hardware (6" includes housing retrofit kit)
- 5% Dimming (Phase Cut or 0-10V), 50,000 hrs, 90+ CRI



Catalog Number	Description	Replaces	Selectable CCT	Voltage	Lumens	Watts	UPC	Energy Star ID
SLDSL4069S1EMWR	4" Surface Downlight	60W	2700K-5000K	120V	635	9	080083153107	2366149
SLDSL6069S1EMWR	6" Surface Downlight	60W	2700K-5000K	120V	635	9	080083153121	2366163
SLD6129S1EMWR	6" Surface Downlight	75W	2700K-5000K	120V	1,300	15	080083153145	2373952
SLDACCKIT	4" and 6" SLD Accessory Kit	N/A	N/A	N/A	N/A	N/A	080083159819	2373954

SMX Edgeless SURFACE MOUNT DOWNLIGHTS - 14" & 18"

- A bright fully luminous lens face and sleek edgeless design blends effortlessly into any ceiling
- Ceiling or wall mounting in compatible junction boxes or recessed housings
- 6-Position Switch: 5 Colour Field-Selectable (27/30/35/40/5000K) + Dim-to-Warm (3000K dims to 1800K)
- Includes j-box mounting and wiring hardware
- 5% Dimming (Phase Cut or 0-10V), 50,000 hrs, 90+ CRI



Catalog Number	Description	Replaces	Selectable CCT	Voltage	Selectable Lumens	Watts	UPC
SMX14RLSFSD2W	14" Surface Mount, Round	90-150W	2700K-5000K + D2W	120V	1200/1600/2000	16/21/26	080083292141
SMX14RLSFS010	14" Surface Mount, Round (0-10V)	90-150W	2700K-5000K + D2W	120-277V	1200/1600/2000	16/21/26	080083292424
SMX18RLSFSD2W	18" Surface Mount, Round	90-150W	2700K-5000K + D2W	120V	1500/2000/2500	17/24/30	080083292165
SMX18RLSFS010	18" Surface Mount, Round (0-10V)	90-150W	2700K-5000K + D2W	120-277V	1500/2000/2500	17/24/30	080083292448

Catalog Number	Description	UPC
SMX14RTRMMB	14" Round Decorative Overlay Matte Black	080083293742
SMX18RTRMMB	18" Round Decorative Overlay Matte Black	080083293766

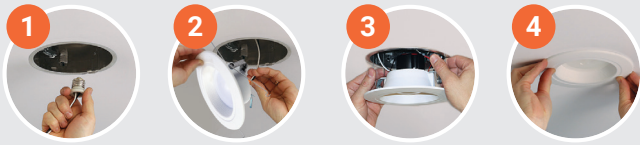


HALO RECESSED LED TRIMS

Maximum energy savings with easy installation!

- Compatible with most recessed housings and sizes
- Suitable for new construction and remodel
- Replaces traditional incandescent lighting

Quick and Easy Installation



HALO RECESSED LED TRIM Product Selection Guide



		DOWNLIGHTS			ADJUSTABLES	
		HLBT	LT	RL & RL Night Light	LA	RA
FEATURES / PERFORMANCE	LED Trim Type	Downlights	Downlights	Downlights	Gimbal Adjustables (35° Tilt/360° Rotation)	Gimbal Adjustables (35° Tilt/360° Rotation)
	Size & Shape	4" & 6" Round	4", 5"/6" Round	3", 4", 5"/6" Round	4", 5"/6" Round	3", 4", 5"/6" Round
	Trim & Lens	Smooth w/ Flat Lens	Baffle or Smooth w/ Flat Lens	Baffle w/ Curved Lens (NL has Transparent Trim)	Baffle w/ Flat Lens	Baffle w/ Flat Lens
	Max Lumens (By size @ 3000K)	705, 965	570, 645, 785	610, 900, 1,200 (Lumen Select, Dedicated) (NL: 775, 1065)	610, 635	500 (3"), 600/900 (4" & 5"/6")
	Colour Temperatures (CCT)	5 CCT 27/30/35/40/5000K	5 CCT 27/30/35/40/5000K Dedicated: 3000K	5 CCT w/ D2W D2W/27/30/35/40/5000K (NL: 2000K)	Dedicated 3000K	5 CCT w/ D2W D2W/27/30/35/40/5000K
CONTROL	Dimming Phase Cut (LE/TE)	10%	10%	5% ¹	10%	5%
	Estimated Life Hours	50,000	50,000	70,000 (NL: 50,000)	35,000	50,000
	Input Voltage	120V	120V	120V, 120-277V	120V	120V
HARDWARE	Decorative Overlays ²	✓	✓ (Baffle Overlays for Baffle LT/LTEs)	✓ Smooth & Baffle Overlays for Standard RLs)		

¹ Available in Smart Wi-Fi® Connected by WiZ Pro versions.

² Matte Black, Tuscan Bronze, Satin Nickel, Paintable Matte White.

LT Recessed Baffle or Smooth Splay LED TRIMS - 4" & 5"/6"

- The LT LED trims offer a cost-saving alternative to the RL Series
- Dead-front plastic fixture with either baffle or smooth splay trims and smooth flat lens
- **LT** - 5 Colour Field-Selectable in 27/30/35/40/5000K; **LT/LTE** - Dedicated in 3000K
- Includes LED Trim, E26 medium socket adapter, and mounting hardware (4" - friction blades; 5"/6" - torsion springs - only fits housings with spring receivers)
- 10% Dimming (Phase Cut LE/TE), 35,000 hrs, 90+ CRI



Smooth Splay Trim

Selectable 5-CCT

Catalog Number	Description	Replaces	CCT	Voltage	Lumens	Watts	UPC	Energy Star ID
LT4069FS1EWHR	4" Baffle Trim	60W	2700K-5000K	120V	680	7	080083283965	2508121
LT56079FS1EWHR	5"/6" Baffle Trim	60W	2700K-5000K	120V	805	7	080083284047	2508127

Dedicated CCT & Lumens

Catalog Number	Description	Replaces	CCT	Voltage	Lumens	Watts	UPC	Energy Star ID
LT460WH6930R-C	4" Baffle Trim, CA T20	60W	3000K	120V	665	7	080083873692	2309297
LT560WH6930R-C	5"/6" Baffle Trim, CA T20	60W	3000K	120V	745	8	080083873715	2309300

RL Recessed Baffle

LED TRIMS - 3", 4", & 5"/6"

- Delivers long life, exceptional performance, selectable lumens, and installs into almost any recessed housing
- Die-cast aluminum baffle trim and curved lens reduces glare and provides a traditional downlight appearance
- 6-Position Switch: 5 Colour Field-Selectable (27/30/35/40/5000K) + Dim-to-Warm (3000K dims to 1800K)
- Includes LED Trim, E26 medium socket adapter, and mounting hardware (3" & 4" - friction blades and 5"/6" - torsion springs & friction blades)
- 5% Dimming (Phase Cut LE/TE), 70,000 hrs, 90+ CRI



Catalog Number	Description	Replaces	Selectable CCT	Voltage	Lumens	Watts	UPC	Energy Star ID
RL4LS9FSD2W1EWH-C	4" Baffle Trim	60-70W	2700K-5000K+D2W	120V	600/900 (Lumen Select)	7/11	080083259021	2402940
RL56069FSD2W1EWH-C	5"/6" Baffle Trim	60W	2700K-5000K+D2W	120V	700	8	080083259069	2356074
RL56LS9FSD2W1EWH-C	5"/6" Baffle Trim	70-75W	2700K-5000K+D2W	120V	900/1,200 (Lumen Select)	8.5/14	080083259083	2354587

4" & 5" Series

TRIMS AND ACCESSORIES

- Trims shape light to minimize aperture glare and reduce ceiling brightness
- Open trims focus the downlighting beam to provide uniform distribution
- Can be used in new construction and remodel housings
- Offered in a variety of styles and accept different lamp types



Catalog Number	Description	Finish	Lamp Source	UPC
993W	4" Coilex Baffle	White	Halogen, INC, LED, CFL	080083628483
5010W	5" Trim White Coilex Trim	White	Accessory	662400602750
H347	Stepdown Transformer from 347V to 120V, 75VA	Accessory	Accessory	662400151289
VBB2	Vapour Barrier Boot 24pcs Per Carton	Blue	N/A	662400500575

H Series Housings -4" & 6"

The industry standard recessed housing for commercial and residential applications.

- Ideal for commercial and residential applications
- Compatible with recessed LED trims or E26 socket-based lamps (bulbs)
- Optimized and listed for EISA compliant tungsten-halogen lamps along with incandescent, CFL, and LED lamps with E26 bases
- For installation in insulated contact (IC) and non-IC rated ceilings
- Available in 120V or 120-277V configurations



LED Housings

Catalog Number	Description	Connection	Lamp Source	Voltage	Pallet Quantity	UPC
H245ICAT	4" LED Ultra-Shallow New Construction (No Socket)	LED Quick Connect	LED Modules	120-277V	180 (30 cartons)	080083770717

Traditional Housings

Catalog Number	Description	Connection	Lamp Source	Voltage	Qty / Single Catalog #	UPC
H99ICAT	4" New Construction, IC Air-Tite, Shallow	E26 Socket	Halogen, INC, LED, CFL	120V	108 (18 cartons)	080083582259
H99TAT	4" New Construction, Non-IC, Air-Tite, Shallow	E26 Socket	Halogen, INC, LED, CFL	120V	168 (28 cartons)	080083584260
E5ICAT	5" IC, Air-Tite, New Construction	E26 Socket	Halogen, INC, LED, CFL	120V	144 (24 cartons)	080083737420



HALO is now available with WiZ and Matter!

Illuminate spaces with the perfect lighting. Set the mood with 16 million colours + white tuning using the WiZ App or preferred compatible voice assistant.

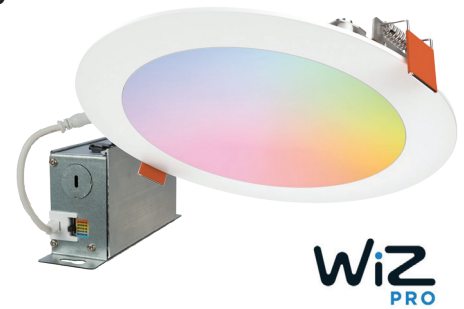
Introducing Matter, which allows you to control your WiZ fixtures from more than one smart platform, providing ultimate flexibility and an Open Platform.



HLB Smart Wi-Fi Slim

CANLESS LED DOWNLIGHTS (Connected by WiZ Pro) - 4" & 6"

- Set up with the WiZ app to wirelessly control lighting via WiZ app
- Fixtures provide 16 million colours and tunable white light from 2200-6500K
- Dead-front plastic frame and smooth lens
- Includes LED downlight and remote driver/junction box with mounting bar
- Wi-Fi® Control & Dimming to 5% via WiZ app, 50,000 hrs, 90+ CRI



Catalog Number	Description	Finish	Selectable CCT	Voltage	Lumens	Watts	UPC	Energy Star ID
HLB4069WZRGBWMWR-C	4" Smart Slim Canless Downlight (WiZ Pro)	White	Full Colour & Tunable White (2200-6500K)	120V	600	9	080083256563	2408244
HLB6099WZRGBWMWR-C	6" Smart Slim Canless Downlight (WiZ Pro)	White	Full Colour & Tunable White (2200-6500K)	120V	974	11.2	080083256549	2408245

RL Smart Wi-Fi Recessed Baffle

LED TRIMS (Connected by WiZ Pro) - 4" & 5"/6"

- Set up with the WiZ app to wirelessly control lighting via WiZ app
- Fixtures provide 16 million colours and tunable white light from 2200-6500K
- Die-cast aluminum baffle trim reduces glare
- Includes LED Trim, E26 medium socket adapter, and mounting hardware (4" - friction blades and 5"/6" - torsion springs & friction blades)
- Wi-Fi® Control & Dimming to 5% via WiZ app, 50,000 hrs, 90+ CRI



Catalog Number	Description	Finish	Selectable CCT	Voltage	Lumens	Watts	UPC	Energy Star ID
RL4069WZRGBWWHR-C	4" Smart Baffle LED Trim (WiZ Pro)	White	Full Colour & Tunable White (2200-6500K)	120V	615	8	080083256525	2397256
RL56069WZRGBWWHR-C	5"/6" Smart Slim Canless Downlight (WiZ Pro)	White	Full Colour & Tunable White (2200-6500K)	120V	690	8	080083256501	2397259

HC Downlight Series

HALO COMMERCIAL DOWNLIGHTS - 4" & 6"

- 4" & 6" aperture new construction/remodel downlights
- Retrofit downlighting kit installs from below ceiling for LED upgrades
- 5 Colour Field-Selectable in 27/30/35/40/5000K; 80 or 90CRI
- 2 light engines; Lumens: 1,000, 1,500, 2,000 or 3,000, 4,000
- Distributions: Precision-formed reflectors in Narrow, Medium and Wide
- Universal voltage, 0-10V dimming down to 1%
- L70 at 60,000 hours



Housing

Catalog Number	Description	Voltage	Lumens	Watts	UPC
HC410D010	4" Housing, Round, 0-10V	120-277V	1000	10.1W	080083860586
HC415D010	4" Housing, Round, 0-10V	120-277V	1500	14.5W	080083860609
HC420D010	4" Housing, Round, 0-10V	120-277V	2000	20.9W	080083860623
HC430D010	4" Housing, Round, 0-10V	120-277V	3000	28.6W	080083860654
HC610D010	6" Housing, Round, 0-10V	120-277V	1000	10W	080083883646
HC615D010	6" Housing, Round, 0-10V	120-277V	1500	14.5W	080083883660
HC620D010	6" Housing, Round, 0-10V	120-277V	2000	20.9W	080083883684

Power Module

Catalog Number	Description	Replaces	CCT	Voltage	Lumens	Watts	UPC
HM40525830	4" LED Module	150W INC, 2-26W CFL	3000K	120-277V	500-2500	6/10/15/21/28W	080083213924
HM40525835	4" LED Module	150W INC, 2-26W CFL	3500K	120-277V	500-2500	6/10/15/21/28W	080083213948
HM40525840	4" LED Module	150W INC, 2-26W CFL	4000K	120-277V	500-2500	6/10/15/21/28W	080083213962
HM40525935	4" LED Module	150W INC, 2-26W CFL	3500K	120-277V	500-2500	6/10/15/21/28W	080083214044
HM60525830	6" LED Module	150W INC, 2-26W CFL	3000K	120-277V	500-2500	6/10/15/21/28W	080083214648
HM60525835	6" LED Module	150W INC, 2-26W CFL	3500K	120-277V	500-2500	6/10/15/21/28W	080083214662
HM60525840	6" LED Module	150W INC, 2-26W CFL	4000K	120-277V	500-2500	6/10/15/21/28W	080083214686

Trim

Catalog Number	Description	UPC
41MDC	4" Trim Conical Reflector, Medium 60° Beam Angle, Specular Clear, Polished Flange	080083850167
41MDCWF	4" Trim Conical Reflector, Medium 60° Beam Angle, Specular Clear, White Flange	080083850228
41MDH	4" Trim Conical Reflector, Medium 60° Beam Angle, Semi-Specular Clear, Polished Flange	080083850181
41MDHWF	4" Trim Conical Reflector, Medium 60° Beam Angle, Semi-Specular Clear, White Flange	080083850242
41MDW	4" Trim Conical Reflector, Medium 60° Beam Angle, White, White Flange	080083850204
41WDC	4" Trim Conical Reflector, Wide 75° Beam Angle, Specular Clear, Polished Flange	080083850266
41WDH	4" Trim Conical Reflector, Wide 75° Beam Angle, Haze Semi-Specular, Polished Flange	080083850280
61MDC	6" Trim Conical Reflector, Medium 60° Beam Angle, Specular Clear, Polished Flange	080083850969
61MDCWF	6" Trim Conical Reflector, Medium 60° Beam Angle, Specular Clear, White Flange	080083851027
61MDH	6" Trim Conical Reflector, Medium 60° Beam Angle, Semi-Specular Clear, Polished Flange	080083850983
61MDHWF	6" Trim Conical Reflector, Medium 60° Beam Angle, Semi-Specular Clear, White Flange	080083851041
61MDW	6" Trim Conical Reflector, Medium 60° Beam Angle, White, White Flange	080083851003
61NDW	6" Trim Conical Reflector, Narrow 55° Beam Angle, White, White Flange	080083850907
61WDC	6" Trim Conical Reflector, Wide 65° Beam Angle, Specular Clear, Polished Flange	080083851065
61WDH	6" Trim Conical Reflector, Wide 65° Beam Angle, Semi-Specular Clear, Polished Flange	080083851089

HCD468 Pro Direct Mount Downlight System

HALO COMMERCIAL DOWNLIGHTS - 4", 6" & 8"

- 4", 6", and 8" install-from-below retrofit/remodel/new construction downlighting
- All LED fixture kits fit any size, shape, or beam distribution of HCD reflector
- 5-colour Field-SeleCCTable or dedicated: 27/30/35/40/5000K CCT; 90 CRI
- Selectable or fixed lumens: Options from 500 to 5,000 lms (nominal)
- 0-10V dimming down to 1% (dim-to-off with WaveLinx)l
- L80 at 60,000 hours (80% lumen maintenance at 60,000 hours)



Selectable 5-CCT

Catalog Number	Description	Replaces	Selectable CCT	Voltage	Lumens	Watts	UPC	Energy Star ID
HCDJBS10CSD	Fixture Kit	150W INC, 2-26W CFL	2700K-5000K	120-277V	500-1,000	6/10/13	080083297962	3554154
HCDJBS1525CSD	Fixture Kit	150W INC, 2-26W CFL	2700K-5000K	120-227V	1,500-2,500	16/21/26	080083297979	3554155
HCDJBS3040CSD	Fixture Kit	250W INC, 4-26W CFL	2700K-5000K	120-277V	3,000-5,000	31/36/41	080083297986	3554156

Accessories

Catalog Number	Description	UPC
HCD41TRC	4" Reflector Round Wide (Shallow), Specular Clear	080083279470
HCD41TRMW	4" Reflector Round Wide (Shallow), Matte White	080083279517
HCD4TRC	4" Reflector Round Medium, Specular Clear	080083278039
HCD4TRMW	4" Reflector Round Medium, Matte White	080083278077
HCD4TSQC	4" Reflector Square Medium, Specular Clear	080083278275
HCD4TSQMW	4" Reflector Square Medium, Matte White	080083278312
HCD61TRC	6" Reflector Round Wide (Shallow), Specular Clear	080083279593
HCD61TRMW	6" Reflector Round Wide (Shallow), Matte White	080083279630
HCD6TRC	6" Reflector Round Medium, Specular Clear	080083278510
HCD6TRMW	6" Reflector Round Medium, Matte White	080083278558
HCD81TRC	8" Reflector Round Wide (Shallow), Specular Clear	080083277674
HCD81TRMW	8" Reflector Round Wide (Shallow), Matte White	080083279814
HCD8TRC	8" Reflector Round Medium, Specular Clear	080083278992
HCD8TRMW	8" Reflector Round Medium, Matte White	080083279036
HCD41TRLWW	4" Round Wide Lensed Wall Wash Kit	080083280667
HCD4TRLWW	4" Round Medium Lensed Wall Wash Kit	080083280544
HCD4TSQLWW	4" Square Medium Lensed Wall Wash Kit	080083280568
HCD61TRLWW	6" Round Wide Lensed Wall Wash Kit	080083280681
HCD6TRLWW	6" Round Medium Lensed Wall Wash Kit	080083280582
HCD81TRLWW	8" Round Wide Lensed Wall Wash Kit	080083280704
HCD8TRLWW	8" Round Medium Lensed Wall Wash Kit	080083280629

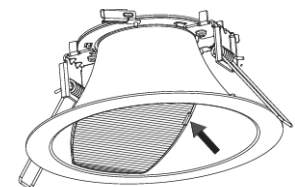


HCD4TSQC

HCD41TRC



HCD Round Wall Wash Kit



HCD Round Wall Wash Kit in Reflector



Flat Panels
p. 30-31



Troffers
p. 32



Strip Lights
p. 33-34



Wraps
p. 34-35

METALUX

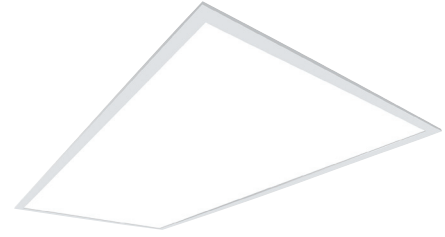
COMMERCIAL LED LIGHTING

Metalux Commercial features a wide selection of affordable yet aesthetically pleasing fixtures with an expanded offering of selectable colour temperatures and lumen options.

CGTS | CGT Series

FLAT PANEL

- Affordable contractor LED panel with fixed or selectable configurations
- Fits in shallow plenums with room to spare; Thin 2 1/8 - inch height
- 3 Colour Field-Selectable in 35/40/5000K and dedicated in 3500K, 4000K, 5000K
- 3 Field-Selectable Lumens: Low, Medium or High settings
- Ideal for office spaces, education, healthcare and retail merchandising



Selectable CCT & Lumens

Catalog Number	Description	Replaces	Selectable CCT	Voltage	Lumens	Watts	UPC	DLC Product ID
14CGTS-NUV	1'X4' Recessed Panel	3-T8, 3-T5	3500K-5000K	120-347V	3,500-4,500	30/35/40	080083247806	PLA9H842922L
22CGTS-NUV	2'x2' Recessed Panel	2-T8, 3-T8	3500K-5000K	120-347V	4,000-6,000	30/35/40	080083247837	PLDJXEJPEQR
24CGTS-NUV	2'x4' Recessed Panel	2-T8, 3-T8	3500K-5000K	120-347V	3,500-4,500	35/40/50	080083247851	PLJQJPJJ7TDJ

Note: DLC Premium items are noted in bold.

Dedicated CCT & Lumens

Catalog Number	Description	Replaces	CCT	Voltage	Lumens	Watts	UPC	DLC Product ID
14CGT4040C	1'X4' Recessed Panel	2-T8, 3-T8	4000K	120-277V	4,000	39.4/38.8	080083879540	PGNH8KOZ
22CGT3535C	2'X2' Recessed Panel	3-T8	3500K	120-277V	3,500	31.4/31.7	080083880003	P6WE1HNZ
22CGT3540C	2'x2' Recessed Panel	3-T8	4000K	120-277V	3,500	31.4/31.7	080083880027	POYGNM7S
24CGT4535C	2'x4' Recessed Panel	2-T8, 3-T8	3500K	120-277V	4,500	38.8/38	080083880089	P28JP113
24CGT4540C	2'x4' Recessed Panel	2-T8, 3-T8	4000K	120-277V	4,500	38.8/38	080083880102	PLTEVMIJ
24CGT4550C	2'x4' Recessed Panel	2-T8, 3-T8	5000K	120-277V	4,500	38.8/38	080083880126	P8BJJLKN
24CGT5540C	2'x4' Recessed Panel	2-T8, 3-T8	4000K	120-277V	5,500	46.8/46.6	080083880188	P5F04P82

Accessories (Optional)

Catalog Number	Description	UPC
CGTSURF14	1'X4' CGT Surface Mount Kit	080083083145
CGTSURF22	2'x2' CGT Surface Mount Kit	080083083121
CGTSURF24	2'x4' CGT Surface Mount Kit	080083083107

Multi-Mount Selectable

FLAT PANEL

- Visually comforting panel mounts directly to the ceiling or wall reducing labor and material cost by removing the need for a surface mount kit
- Versatile mounting allows for surface, wall, recessed, or suspended with kit
- Selectable Colour Temperatures in 90 CRI Standard:
2x2/2x4/1x4: 35/40/5000K | 4' x 6": 27/30/35/40/5000K
- Selectable Lumens: Low, Medium, High settings
- Ideal choice for commercial office, school, and healthcare spaces



Catalog Number	Description	Replaces	Selectable CCT	Voltage	Selectable Lumens	Watts	UPC	DLC Product ID
22MMS-L3C3-UNV	2'x2', Direct Mount Panel	3-T8 32W	3500K-5000K	120-277V	2,400-4,800	21/28/42	080083292042	S-28RRZT
24MMS-L3C3-UNV	2'x4', Direct Mount Panel	4-T8 32W	3500K-5000K	120-277V	3,500-6,200	28/36/48	080083292059	S-KJX1CZ
14MMS-L3C3-UNV	1'x4', Direct Mount Panel	2-T8 32W	3500K-5000K	120-277V	2,620-5,286	18/25/38	080083292035	S-V9CG2Y

Note: DLC Premium items are noted in bold.

FPanel Series

FLAT PANEL

- Ultra-thin LED flat panel; Less than 2-inches height for shallow plenums
- Fixed and selectable configurations available
- Selectable switch to set colour temperature, lumens and watts desired for task
- Refined visual optics, superior acrylic light guide; uniform corner to corner illumination
- Ideal solution for office spaces, schools, healthcare facilities and retail merchandising areas



Dedicated CCT & Lumens

Catalog Number	Description	Replaces	CCT	Voltage	Lumens	Watts	UPC	DLC Product ID
14FP4240C	1'X4' LED Flat Panel	2-T8 32W, 3-T8 32W	4000K	120-277V	4,451	39	080083833481	PBGLLF3K
22FP3240C	2'X2' LED Flat Panel	3-T8 32W, 3-T5 28W	4000K	120-277V	3,200	29	080083833542	PUOIG6S2
22FP4235C	2'x2' LED Flat Panel	3-T8	3500K	120-277V	4641	39	080083833580	P8HIK308
22FP4240C	2'x2' LED Flat Panel	3-T8	4000K	120-277V	4567	39	080083833603	PELH4PNQ
24FP4740C	2'x4' LED Flat Panel	2-T8 32W, 3-T8 32W	4000K	120-277V	4,858	40	080083833665	PGY6ID6B
24FP6440C	2'x4' LED Flat Panel	3-T8, 4-T9	4000K	120-277V	6,611	59	080083833726	Pending Approval

Accessories

Catalog Number	Description	UPC
FPSUS24	Suspension Kit for Panels (CGT, FP, FPX)	080083258895
FPXSURF14	1x4 LED Flat Panel Surface Mounting Kit	080083867424
FPXSURF22	2x2 LED Flat Panel Surface Mounting Kit	080083867387
FPXSURF24	2x4 LED Flat Panel Surface Mounting Kit	080083867400

Achieva™ Recessed Selectable TROFFER

- Ultra slim 1.5" center basket design fits into the shallowest of plenums
- 3 Colour Field-Selectable in 30/35/4000K in 80+ CRI
- 3 Selectable lumens in standard or HO options up to 8,150
- Ideal choice for commercial, institutional and healthcare facilities



Catalog Number	Description	Replaces	Selectable CCT	Voltage	Selectable Lumens	Watts	UPC	DLC Product ID
14ARS-L3C3-NUV	1'x4', Troffer	2-T8	3500K-5000K	120-347V	2,800-4,600	20/25/34	080083287529	S-TKCBT4
22ARS-L3C3-NUV	2'x2', Troffer	3-T8, 2-T5	3500K-5000K	120-347V	2,800-4,300	20/27/33	080083287543	S-G4W4DW
24ARS-L3C3-NUV	2'x4', Troffer	2-T8, 3-T8	3500K-5000K	120-347V	3,400-6,300	25/33/47	080083287567	S-3KXXVF

Note: DLC Premium items are noted in bold.



SLSTP Series STRIP LIGHT

- LED strip light with decorative end caps and toolless lens removal
- Suitable for either single or continuous row application
- 3 Colour Field-Selectable in 35/40/5000K and dedicated in 4000K
- Field-Selectable lumens 2,400 - 11,200 or dedicated up to 9300
- Impact resistant polycarbonate lens reduces maintenance



Catalog Number	Description	Replaces	Selectable CCT	Voltage	Selectable Lumens	Watts	UPC	DLC Product ID
4SLSTP4040DD-120V	4' Single Lens	2-T8 32W, 1-T5HO 54W	4000K (Dedicated)	120V	4000 (Dedicated)	40	080083705801	2268835
4SLSTP4040DD-UNV	4' Single Lens	2-T8 32W, 1-T5HO 54W	4000K (Dedicated)	120-277V	5,200 (Dedicated)	43	080083705825	PXZQGN9C
4SLSTP4040DD-UNV	4' Single Lens	2-T8 32W, 1-T5HO 54W	3500K-5000K	120-277V	2,400-6,000	18/31/48	080083174416	S-21NRBK
4SLSTP4040DD-347	4' Single Lens	2-T8 32W, 1-T5HO 54W	3500K-5000K	347V	2,400-6,000	18/31/47	080083249466	S-21NRBK
8SLSTP4040DD-UNV	8' Single Lens	4-T8 32W, 2-T12 75W	3500K-5000K	120-277V	4,300-11,200	33-85	080083174423	S-CQKM9L
8SLSTP4040DD-347	8' Single Lens	4-T8 32W, 2-T12 75W	3500K-5000K	347V	4500-11000	32/62/84W	080083249480	S-CQKM9L

Sensor Kits

Catalog Number	Description	PIR Sensor	UPC
SLSTP MS00 KIT	SLSTP Field Installable Sensor KIT	100%/50% / OFF	080083254200
SLSTP MS25 KIT	SLSTP Field Installable Sensor KIT	100%/50% / Low (~30%)	080083254224

Accessories (Optional)

Catalog Number	Description	UPC
WG-SLSTP-4	4' Wireguard	080083296330

ST Series STRIP LIGHT

- Full-length LED strip light ideal for replacing fluorescent strips
- Superior performance with lumens up to 9,300 and 129 lumens per watt
- 3 Colour Field-Selectable in 35/40/5000K
- Continuous row mount aligner included to add-on length as needed
- Low voltage 0-10V dimming to 10%



Catalog Number	Description	Replaces	Selectable CCT	Voltage	Lumens	Watts	UPC	DLC Product ID
4ST1L2040R	4' Single Lens, Non-Dimming	1-T8 32W	4000K	120-277V	4,800	41	080083838189	2382010
4ST2L40SC3	4' Dual Lens, Dimming	2-T8 32W, 1-T5HO 54W	3500K-5000K	120-277V	4,800	41	080083241583	S-TSP41D
8ST2L8040R	8' Dual Lens, Non-Dimming	4-T8 32W, 2-T12 75W	4000K	120-277V	8867	78	080083838202	2382033

Accessories

Catalog Number	Description	UPC
WG/SSF-4FT-B	4' Wireguard for Use with ST Series	662400106647

SNX Series STRIP LIGHT

- Contemporary single frosted radial lens LED strip light
- Replaces two or four lamp fluorescents up to 150W
- 3 Colour Field-Selectable in 35/40/5000K and dedicated in 4000K
- 3 Field-Selectable lumens: Low, Medium or High settings
- Single or continuous row via surface or suspended mount



Selectable CCT & Lumens

Catalog Number	Description	Replaces	Selectable CCT	Voltage	Selectable Lumens	Watts	UPC	DLC Product ID
4SNX-SL3-LW-UNV-CC83-CD1-U	4' Single Lens	2-T8 32W, 1-T5HO 54W	3500K-5000K	120-277V	2,000-6,100	17-51	080083265107	S-9ZYMUK
8TSNX-SL3-LW-UNV-CC83-CD2-U	8' Single Lens	4-T8 32W, 2-T12 75W	3500K-5000K	120-277V	4,100-12,000	34-101	080083265114	S-Q7H6AT

Accessories

Catalog Number	Description	UPC
WG-SNX/SN-4FT-B	4' Wireguard for Use with SNX/SN Series	080083265268

WP Series WRAP

- Compact LED wrap light delivers value and energy savings
- Perfect retrofit solution for replacing single or 2-lamp fluorescent wraparounds
- Low-profile, highly versatile design; Post-painted die-formed channel
- Prismatic lens ensures even, glare-free light distribution



Catalog Number	Description	Replaces	CCT	Voltage	Lumens	Watts	UPC
4WP3040R	4' Utility Wrap	2-T8 32W	4000K	120-277V	4010	34	080083847167

Achieva™ Surface Selectable WRAP

- Ideal for replacing up to four lamp and low-bay linear fluorescents
- 3 Colour Field-Selectable in 35/40/5000K, Field-Selectable lumens: 2,250 - 12,500
- Designed for single or continuous row mount
- Suitable for ceiling, wall, or suspension mounting



Catalog Number	Description	Replaces	Selectable CCT	Voltage	Selectable Lumens	Watts	UPC	DLC Product ID
4AWWS-L3C3-NUV	4' Wide Modern Wrap, Dimming	2-T8 32W	3500K-5000K	120-347V	4,500-6,500	32/40/50	080083289974	S-BN6VLX

NWS Series

WRAP

- Ideal for replacing two or three lamp fluorescents up to 96W
- 3 Colour Field-Selectable in 35/40/5000K
- Field-Selectable lumens: 2,000 - 5,272
- Surface (wall or ceiling) mount via junction box or direct to surface
- UNV 0-10V dimming to 10%



Catalog Number	Description	Replaces	Selectable CCT	Voltage	Lumens	Watts	UPC	DLC Product ID
4NW35C3R	4' Wrap, Dimming	2-T8 32W	3000K-4000K	120V	3500	35	080083257447	2398236
4NWS3C3-NUV	4' Wrap, Dimming	2-T8 32W	3500K-5000K	120-347V	3,300-4,800 (Selectable)	28/34/42	080083257546	S-YJTA0N

WN Series

WRAP

- 100% clear acrylic prismatic lens provide excellent illumination
- Lift-and-shift lens offers easy re-lamping
- Ends formed with housing for strength and row alignment
- Commercial or residential electronic ballast
- Rotorlock lampholders enable easy lamp engagement



Selectable CCT & Lumens

Catalog Number	Description	Replaces	CCT	Voltage	Lumens	Watts	UPC
WN-232A-UNV-EB81-U	4' Surface Commercial Wraparound	2-T8 32W	Lamp Dependant	120-277V	Lamp Dependant	Lamp Dependant	080083518845

Troffer Accessories

Catalog Number	Description	UPC
DF-14W-U	1x4 Drywall Frame Kit	662401232949
DF-22W-U	2x2 Drywall Frame Kit	662401232963
DF-24W-U	2x4 Drywall Frame Kit	662401232970



High Bays
p. 39 & 41



Vaportites
p. 40

METALUX

INDUSTRIAL LIGHTING

Metalux Industrial offers a selection of economical and energy-efficient high-bay and vapo-tite lighting solutions designed for a wide variety of applications.

UHBS Selectable Series

HIGH BAY

- Compact, 13" and 15" round die cast aluminum housing
- Up to 36,000 selectable lumens and 4000K/5000K selectable CCT
- Sensor ready port for quick plug and play install
- 120-347 volt operating range



Catalog Number	Description	Replaces	Selectable CCT	Voltage	Selectable Lumens	Watts	UPC	DLC Product ID
UHBS-1218-MV-L84050-U	Round, White*	320W Halide, 4-T5HO 54W	4000K-5000K	120-347V	12,000-18,000	81-120	080083256471	S-PEIA6S
UHBS-2436-MV-L84050-U	Round, White*	750W Halide, 8-T5HO 54W	4000K-5000K	120-347V	24,000-36,000	145-238	080083256488	S-Z5HGE1

* Medium Distribution. Note: DLC Premium items are noted in bold.

Accessories

Catalog Number	Description	UPC
Y-TOGGLE-10-2PK	Mounting Toggle and 10' Cable	080083259557
UHBS SENSOR REMOTE	Sensor remote	080083260249
UHBS-WG13	13 DIA Wire Guard	080083273348
UHBS-WG15	15 DIA Wire Guard	080083273355

PIR Sensor

Catalog Number	Description	UPC
UHBS-SENSOR PK	PIR Sensor, 360 Lens	080083257898

SPHB Selectable Series

HIGH BAY

- 2 Compact, lightweight designs for easy install
- Up to 36,000 selectable lumens and 4000K/5000K selectable CCT
- Sensor Ready port for quick plug and play install
- Great for industrial, manufacturing, gymnasium, and warehouse



Selectable lumen output and colour temperature with an easy to access toggle switch.



Catalog Number	Description	Replaces	Selectable CCT	Voltage	Selectable Lumens	Watts	UPC	DLC Product ID
SPHB-1224SE-M-UNV-L84050-CD-SP1-U	Med. Distr	6-T5HO, 8-T8, 400W MH	4000K-5000K	120-277V	12,000-24,000	82/123/166	080083289264	S-01PR4D
SPHB-2436SE-M-UNV-L84050-CD-SP1-U	Med. Distr	8-T5HO, 10-T8, 750W MH	4000K-5000K	120-277V	24,000-36,000	162/209/251	080083289288	S-7V2YTC

LHBS Series

HIGH BAY

- Economical industrial high bay/low bay LED linear luminaire
- CCT (4000/5000K) and lumen select for greater flexibility
- Standard diffused lens provides added protection and glare control
- Energy-efficient, one-for-one replacement of linear fluorescent and HID fixtures
- Perfect for industrial, manufacturing, gymnasium and warehouse applications



Catalog Number	Description	Replaces	Selectable CCT	Voltage	Selectable Lumens	Watts	UPC	DLC Product ID
LHBS-1218-UNV-L84050-U	Lensed HB Select*	4-T8, 3-T5HO, 175W MH	4000K-5000K	120-277V	13,000-18,000	85-124	080083274741	S-J1KSFT
LHBS-1824-UNV-L84050-U	Lensed HB Select*	6-T5HO, 8-T8, 400W MH	4000K-5000K	120-277V	18,800-24,000	119-156	080083275625	S-24YMLJ
LHBS-2436-UNV-L84050-U	Lensed HB Select*	8-T5HO, 10-T8, 750W MH	4000K-5000K	120-277V	24,388-36,000	155-246	080083276141	S-EUK8B9

* Medium Distribution. Note: DLC Premium items are noted in bold.

VHB Series

HIGH BAY

- Designed for a wide variety of applications and mounting heights
- Precision designed optics; High impact polycarbonate optical LED lens
- Compact, lightweight design for ease of installation
- Lumen selectable models available
- Solution for spaces utilizing traditional linear fluorescent and HID high bay
- Ideal for industrial, commercial, manufacturing and gymnasium applications



Catalog Number	Description	Replaces	CCT	Voltage	Selectable Lumens	Watts	UPC	DLC Product ID
VHB-1824-W-UNC-L840-CD-MP-U	Compact Linear, WD Distr, Selectable Lumens	400W HID, 6-T5HO 54W	4000K	347-480V	18,000-24,000	126-158	080083191611	PKWWO6XP
VHB-1824-W-UNV-L840-CD-MP-U	Compact Linear, WD Distr, Selectable Lumens	400W HID, 6-T5HO 54W	4000K	120-277V	18,000-24,000	126-158	080083191390	PKWWO6XP
VHB-24-W-UNC-L840-CD-MP-U	Compact Linear, WD Distr	400W HID, 6-T5HO 54W	4000K	347-480V	24,000 (Dedicated)	174	080083827282	PJ92YFP9
VHB-24-W-UNV-L840-CD-MP-U	Compact Linear, WD Distr	400W HID, 6-T5HO 54W	4000K	120-277V	24,000(Dedicated)	174	080083827299	PJ92YFP9

Note: DLC Premium items are noted in bold.

F-Bay Accessories

Catalog Number	Description	UPC
MMS-OSFHUITW-120V/277V/347V	Modular motion sensor kit	080083590148
AYC-CHAIN/SET-U	V Hooks & 36" Chain Set	080083545704
HBAYC-CHAIN/SET-U	Hook-style V-Hangers	080083575756
Y-TOGGLE-10-2PK	Aircraft Cable Y-Toggle 120"	080083259557
MC12	Modular Cord & Plug	080083552498
MC6	Modular Cord & Plug	623961368455

VT Series

VAPORTITE

- Contemporary surface-mount fixture featuring rugged and durable construction
- Sealed and gasketed, reinforced fiberglass housing with a high impact lens
- Internal fasteners and tethers provide maximum protection and rigidity
- Optical performance for interior and exterior applications; IP65 certified; NSF Listed
- Ideal for parking garages, food processing, canopy, manufacturing and complex environmen



Catalog Number	Description	Replaces	CCT	Voltage	Lumens	Watts	UPC	DLC Product ID
4VT2-LD5-6-DR-UNV-L835-CD1-WL-U	4' Fixed Output	3-T8, 1-T5HO	3500K	120-277V	6,197	50	080083146598	P1R4U9WP

APVT Series

VAPORTITE

- Durable polycarbonate housing with integral metal gear tray
- 4ft and 8ft sizes with CCT and lumen select capability
- UL Wet location, IP65 and operating temp -20C to 40C
- Stainless steel latches, single conduit hub, and mounting included



Catalog Number	Description	Replaces	Selectable CCT	Voltage	Selectable Lumens	Watts	UPC	DLC Product ID
4APVTLD-SL3C3	4' Selectable Output	3-T8 32W, 2-T5HO 54W	3500K-5000K	120-277V	3,000-6,000	21-46	080083264216	S-M39BJL



Good

Better

Best



		LHBS	SPHB	UHBS
APPLICABILITY ¹	Big Box Retail	★	★★	★★
	Sports / Recreation	★★	★★	★★
	Warehouses	★★★	★★★	★★
	Manufacturing	★★	★★★	★★
	Cold Storage	★	★★★	★
	Complex Environments		★	★★

		LHBS	SPHB	UHBS
FEATURES / PERFORMANCE	Lumen Range	12,000 - 36,000	12,000 - 36,000	12,000-36,000
	Selectable Lumens	12,000-18,000 or 18,000-24,000 or 24,000-36,000	12,000 - 24,000 or 24,000 - 36,000	12,000-18,000 or 24,000-36,000
	Efficacy (Max)	160 lm/W	158 lm/W	137 lm/W
	CRI	80	80	80
	Distribution	M	M	M
	Sizes	13' x 2' & 4'	12' x 18" or 12' x 36"	13" & 15"
	Housing ²	CRS	CRS	Diecast
	Lensing	Acrylic	Polycarbonate	Polycarbonate
	Uplight	None	None	None
	Life (@ 60K hrs)	L84	L86	L91
	Ambient Range	-20C to 50C	-40C to 45C	-40C to 45C
	Emergency	None	Optional	None
	Ratings	Damp	Damp, IP5X	IP65, NSF, Wet Location
DLC	Premium	Premium	Standard	

		LHBS	SPHB	UHBS
INTEGRATED CONTROLS	Basic Occupancy		✓	
	Stand Alone Daylight / Occupancy		✓	✓
	WaveLinx		✓	

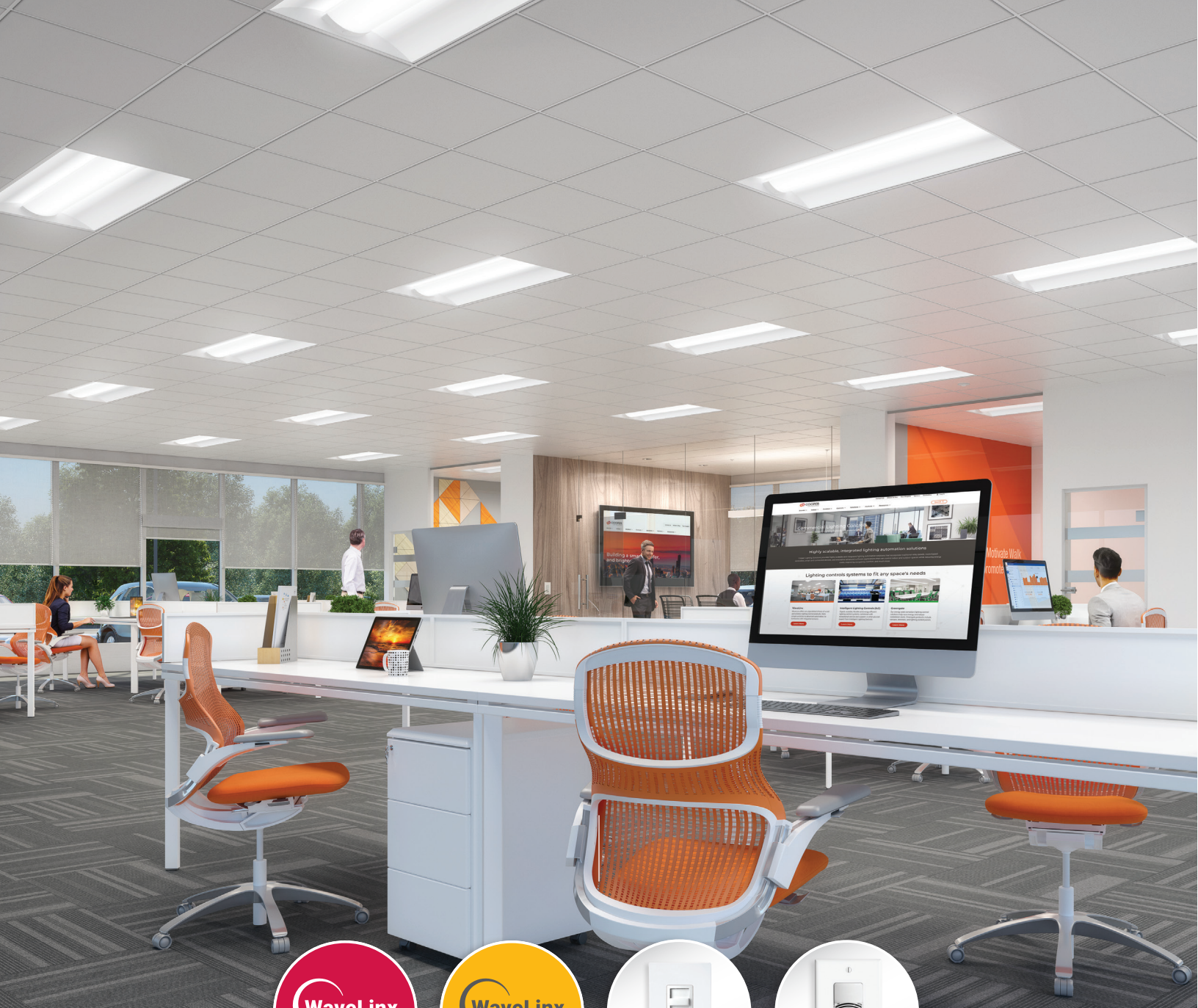
Notes: 1. ★★★ = high applicability, ★★ = medium applicability, ★ = low applicability, blank = non-applicable
 2. CRS=Cold-rolled Steel, Extruded= Extruded Aluminum, Diecast=Diecast Aluminum.

Compatible Controls

Warehouse facilities must meet requirements of ASHRAE Standard 90.1 2010. The High Bay Fixture Mount Sensor solves this by meeting and exceeding those requirements.



OEF High Bay Fixture Mount Sensor
 See page 46



WaveLinx LITE
p. 43



WaveLinx CAT
p. 44-45



GREENGATE
Switches
p. 46-48



GREENGATE
Sensors
p. 46-48

CONNECTED LIGHTING & CONTROLS

Meet lighting codes, save energy and reduce installation costs for all of your lighting and control needs with WaveLinx, Greengate switches, dimmers and sensors.



A smarter way to save energy is here!

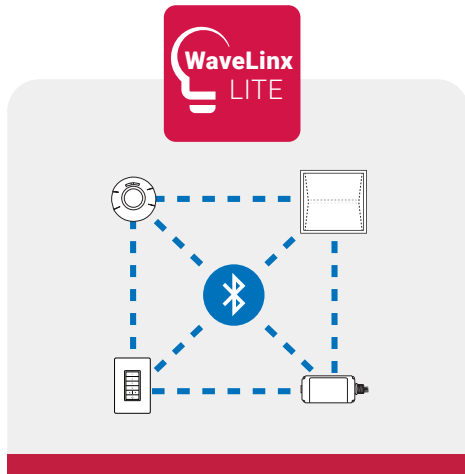
WaveLinX is a Cooper Lighting Solutions smart digital lighting system. The WaveLinX solution provides standalone/grouped occupancy sensing, manual/personal dimming control, daylighting and more.

Save 60%
in lighting
energy
with WaveLinX

One system for all your spaces

Wireless for Single Spaces

Eliminate low voltage wiring with wireless connected luminaires and control devices for single rooms, areas, or parking spaces.

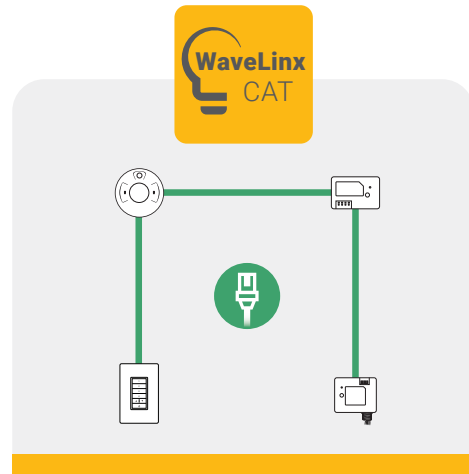


[CLICK HERE](#) to learn more about our WaveLinX LITE solution.

See [page 43](#) for our WaveLinX LITE products.

Wired for Single & Connected Spaces

Simply connect the WaveLinX CAT5 based lighting control devices to control the lights in a single room or area.



[CLICK HERE](#) to learn more about our WaveLinX CAT solution.

See [page 44](#) for our WaveLinX CAT products.

WTK Wireless Tilemount WaveLinx LITE SENSOR KIT

- Enable 0-10V luminaires to be controlled by the WaveLinx LITE system
- 120-277VAC with 3 amp relay and 0-10V continuous dimming
- Mounting heights of 8 to 15ft (2.4 to 4.5m)
- Provides PIR and photocell capabilities
- Installs into 1/2-3/4" (12-19mm) ceilings or octagonal junction boxes



Catalog Number	Description	Finish	Voltage	UPC	DLC Product ID
WTK	WaveLinx LITE Tilemount Sensor Kit	White	120-277V	080083293261	NM8502RF5T1

RSP WaveLinx LITE SWITCHPACK

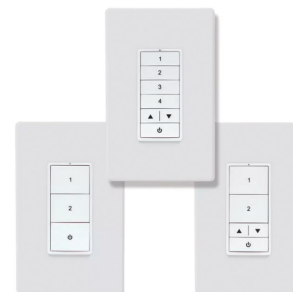
- 20A rated relay
- 0-10v dimming control
- Plenum-rated design with easy junction box mounting
- Universal voltage input (120, 277 and 347 VAC)
- Suitable for plug load control



Catalog Number	Description	Voltage	UPC	DLC Product ID
RSP-L-010-347	WaveLinx LITE Wireless, Dimming	120/347V	080083288229	NM8502RF5T1

WWL Wallstation WaveLinx LITE WALLSTATION

- Multi-scene selection, and zone programmable
- Suitable for standard single or multi-gang NEMA wall box
- Line voltage (120-277VAC) and battery powered options
- Configurable through software - no physical adjustments



Line Voltage Wallstation

Catalog Number	Description	Finish	Voltage	UPC	DLC Product ID
WWL3-W	Wallstation, 3 Button	White	120-277V	080083283170	NM8502RF5T1
WWL3-RL-W	Wallstation, 3 Button Raise/Lower	White	120-277V	080083282449	NM8502RF5T1
WWL5-RL-W	Wallstation, 5 Button Raise/Lower	White	120-277V	080083283149	NM8502RF5T1

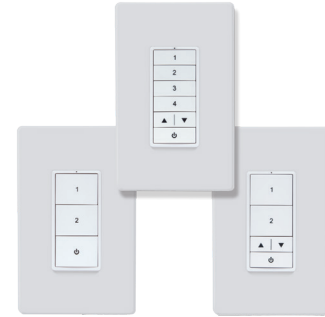
Wireless Battery Powered Wallstation

Catalog Number	Description	Finish	Voltage	UPC	DLC Product ID
WWBL3-W	Wallstation, 3 Button,	White	N/A	080083256600	NM8502RF5T1
WWBL3-RL-W	Wallstation, 3 Button Raise/Lower	White	N/A	080083256198	NM8502RF5T1
WWBL5-RL-W	Wallstation, 5 Button Raise/Lower	White	N/A	080083256181	NM8502RF5T1

WST WaveLinx CAT

WALLSTATION

- On/Off, Raise/Lower and Scene Presets with 1, 3, 5 and 6 button option
- Draws power from CAT communications bus to simplify wiring
- Clean and elegant with a custom button engraving option to enhance occupant experience
- Button actions are configurable through the WaveLinx app
- Remotely upgradeable firmware



Catalog Number	Description	Finish	UPC	DLC Product ID
WST-C-3	WaveLinx CAT Wallstation, 3 Button	White	080083272457	N-X04521
WST-C-3D	WaveLinx CAT Wallstation, 3 Button Dimming	White	080083272471	N-X04521
WST-C-5D	WaveLinx CAT Wallstation, 5 Button Dimming	White	080083272495	N-X04521

BPI Bluetooth Programing WaveLinx CAT

INTERFACE MODULE

- Bluetooth radio used to pair to a mobile device with WaveLinx CAT app
- Two RJ45 ports used to connect to CAT communication bus and other CAT devices
- Draws power from CAT communications bus to simplify wiring
- Remotely upgradeable firmware
- Encrypted authentication to a WaveLinx Mobile App for secure programming



Catalog Number	Description	UPC	DLC Product ID
BPI-C-L	L BPI-C Bluetooth Program Interface	080083272693	N-X04521

Accessories

Catalog Number	Description	UPC
ACC-C-TP-6PK	ACC-C Canbus Termination Plug - 6PK	080083285846

Occupancy Ceiling Sensor WaveLinx CAT

INTERFACE MODULE

- Passive Infrared sending technology to detect motion up to 12 ft mounting height
- 600 and 1200 sqft coverage with high sensitivity core
- Built-in photocell to dim or turn off the lights based on daylight coming into the space
- LED Status Indicator for simple troubleshooting
- Draws power from CAT communications bus to simplify wiring



Catalog Number	Description	Finish	Detection Type	Coverage	UPC	DLC Product ID
OCS-C-P12	OCS-C Occupancy Ceiling Sensor, 1200 sq ft.	White	PIR	1,200 sq ft.	080083272297	N-X04521
OCS-C-P06	OCS-C Occupancy Ceiling Sensor, 600 sq ft.	White	PIRh	600 sq ft.	080083272419	N-X04521

Accessories

Catalog Number	Description	UPC
ACC-C-TP-6PK	ACC-C Canbus Termination Plug - 6PK	080083285846

RSP Dimming WaveLinx CAT SWITCHPACK

- Control (on/off/dim) commercial fixtures using 20A Relay and an 0-10V dimming output
- Plenum-rated design with easy junction box mounting
- 120/277 VAC Input Voltage
- 24VDC output power to power the CAT bus and CAT devices
- Two RJ45 connectors to daisy chain with other CAT devices using standard CAT5 cabling



Catalog Number	Description	Voltage	UPC	DLC Product ID
RSP-C-010-Z1	WaveLinx CAT RSP-C Relay Switchpack - Zone 1	120-277V	080083272518	N-X04521

Accessories

Catalog Number	Description	UPC
ACC-C-TP-6PK	ACC-C Canbus Termination Plug - 6PK	080083285846

ESP Emergency Dimming WaveLinx CAT SWITCHPACK

- UL924 control device for emergency fixtures
- Control (on/off/dim) commercial fixtures using 20A Relay and an 0-10V dimming output
- Plenum-rated design with easy junction box mounting
- 120/277 VAC Input Voltage
- 24VDC output power to power the CAT bus and CAT devices
- Two RJ45 connectors to daisy chain with other CAT devices using standard CAT5 cabling



Catalog Number	Description	Voltage	UPC	DLC Product ID
ESP-C-010-Z1	ESP-C Emergency Relay Switchpack - Zone 1	120-277V	080083272570	N-X04521

Accessories

Catalog Number	Description	UPC
ACC-C-TP-6PK	ACC-C Canbus Termination Plug - 6PK	080083285846

WBSD 0-10V Decorator Dimmer

WALL SWITCH

- Provides a full-range of linear-slide dimming control of 0-10V compatible light sources
- Allows user to return to previous light level when turning lights ON
- Can be used in single-pole (1 location) and 3-way (multi-location) applications
- Neutral wire is not required for installation of device
- Ideal for light commercial applications; Compatible with decorator style devices and wallplates



Catalog Number	Description	Finish	Voltage	UPC
WBSD-010DEC-C1	0-10V Decorator Dimmer	White, Ivory, Almond	120V/277V	080083735266
WBSD-010SLD-W	0-10V Slide Dimmer	White	120V/277V	080083735280

OSW 0-10V Dimmer with Dual Tech Sensor

SENSOR

- 3-in-1 solution that combines functionality of a switchpack, a sensor and a 0-10V dimmer
- Saves labor costs, reduces installation time and meets energy codes and standards
- Ultrasonic occupancy (US) and passive infrared (PIR) sensing; Daylight harvesting
- Can be used in single-pole (1 location) as well as 3-way (multi-location) applications
- Compatible with Cooper Lighting Solutions' decorator style devices and wallplates



Catalog Number	Description	Finish	Voltage	Watts	Detection Type	Coverage	UPC
OSW-D-010-W	0-10V Decorative Dimmer	White	120/277V	960W/2,200W	PIR and Ultrasonic	1,000 sq ft.	080083816071
OSW-P-010-W	0-10V Wallbox Dimmer, Sensor	White	120/277V	1200W/2,200W	PIR	1,000 sq ft.	080083758661
OSW-P-0801-120-W	Sensor PIR 120VAC (Grd Req)	White	120V	600W	PIR	800 sq ft.	032664729829
OSW-P-1001-MV-W	Sensor PIR 120/277V (Grd Req)	White	120/277V	2200W	PIR	1,000 sq ft.	032664729775

Wall/Corner Dual Tech Low Voltage

SENSOR

- MicroSet self-adjusting time delay and sensitivity
- Optional built-in light level sensor
- Optional BAS/HVAC isolated relay
- NEMA WD 7 Guide robotic method utilized to verify coverage patterns
- Manual On feature



Catalog Number	Description	Finish	Voltage	Watts	Detection Type	Coverage	UPC
OAWC-DT-120W	Fixture Mount Sensor	White	0-30VDC	N/A	PIR	1,200 sq ft.	080083579563

ONW Switch with Sensor

SENSOR

- Passive Infrared (PIR) single level occupancy sensing switch for motion sensing control
- Also a conventional wall switch; Designed for energy savings and convenience
- Detects motion from a heat-emitting source (such as a person entering a room) within its field-of-view and automatically switches lights ON
- Neutral and non-neutral wiring options for installation; Ideal for retrofit applications



Catalog Number	Description	Finish	Voltage	Watts	Detection Type	Coverage	UPC
ONW-P-1001-MV-W	PIR Wall Sensor	White	120/277V	1,200W/2,200W	PIR	1,000 sq. ft.	080083523863
ONW-D-1001-MV-W	Dual Tech Wall Sensor	White	120/277V	1,200W/2,200W	PIR and Ultrasonic	1,000 sq. ft.	080083524709

OEF High Bay Fixture Mount Sensor

SENSOR

- Fixture-mount high bay/low bay occupancy sensor with integrated photocell
- Provides 0-10V control and 1-100% continuous dimming
- 2 interchangeable 360° high bay and low bay lenses; specifically designed for LED fixture control
- Easy to program; Quicksnap feature for easy installation
- Suitable for use in standard and cold storage applications



Catalog Number	Description	Finish	Voltage	Watts	Detection Type	Coverage	UPC
OEF-P-010V-MV	Fixture Mount Sensor	White	120/277V	1200	PIR	1,500 sq. ft.	080083758104

OAC Ceiling Mount Dual Tech Sensor

SENSOR

- Combines ultrasonic and Passive Infrared (PIR) technologies, eliminates false deactivations
- MicroSet self-adjusting technology provides an adaptive and airflow tolerant technology
- Ideal for spaces that have increased airflow due to higher occupant levels
- Drastically simplifies and reduces installation and adjustment time
- Available in line-voltage and low-voltage versions; Compatible with SP20 switchpacks



Catalog Number	Description	Finish	Voltage	Watts	Detection Type	Coverage	UPC
OAC-DT-1000	DT Ceiling Mount, Low Voltage	White	10-30VDC	N/A	PIR and Ultrasonic	1,000 sq. ft.	080083579242
OAC-DT-1000-R	DT Ceiling Mount, Isolated Relay	White	10-30VDC	N/A	PIR and Ultrasonic	1,000 sq. ft.	080083702060
OAC-DT-2000	DT Ceiling Mount, Low Voltage	White	10-30VDC	N/A	PIR and Ultrasonic	2,000 sq. ft.	080083579266
OAC-DT-2000-MV	DT Ceiling Mount, Line Voltage	White	120-347V	1200W-2700W	PIR and Ultrasonic	2,000 sq. ft.	080083579426
OAC-DT-2000-R	DT Ceiling Mount, Isolated Relay	White	10-30VDC	N/A	PIR and Ultrasonic	2,000 sq. ft.	080083702077
OAC-P-1500-MV	MicroSet Ceiling Sensor w/ Daylight Sensor	White	10-30VDC	N/A	PIR	1,500 sq. ft.	080083579402

Heavy Duty SWITCHPACKS

- Features robust and reliable mechanical latching relays, exclusive fail-safe circuitry, daylight harvesting, bi-level switching and is configurable for energy code requirements
- The switchpack is specifically designed to handle high inrush electronic ballast loads and offer unmatched durability and service
- Auto-ON / Auto-OFF with local switch



Catalog Number	Description	Finish	Voltage	Watts	UPC
SP15-347	Standard Heavy Duty	White	347V	5,200W	080083503230
SP20-MV	Standard Heavy Duty	White	120/277V	2,400-5,400W	080083503223
SP20-RD4	Heavy Duty 20A-24VDC	White	120/277V	2,400-5,500W	080083815869



Wall Mounts
p. 50



Floodlight
p. 51, 54-55



Ceiling Mount
p. 51



Area/Site
p. 52, 54

LUMARK & LUMARK AP OUTDOOR LED LUMINAIRES

Lumark brands offer a wide selection of high-quality product solutions that provide market-leading ease of installation, superior area safety, and maximum energy savings in commercial and industrial spaces.

LUMARK AP WALL MOUNTS

Lumark AP provides high-value outdoor lighting products that are in stock and supported with decades of experience and expertise in the industry.



ASWP Adjustable Slim Wall Pack Luminaire WALL MOUNT

- Adjustable slim wall pack available in small and medium sizes
- 3-colour selectable CCT: 3000K, 4000K, 5000K; 70CRI
- Lumen packages range from 2,100-10,200 lumens
- Internal toggle switches to easily adjust luminaire CCT and lumens
- Integrated button type photocontrol for dusk-to-dawn operation



Catalog Number	Description	Finish	Replaces	Selectable CCT	Voltage	Selectable Lumens	Watts	UPC	DLC Product ID
ASWPLED1S	Small LED Wall Pack	Bronze	155W HID	3000K-5000K	120-347V	2,000-4,000	15-30W	080083265169	S-YWC5DG
ASWPLED2S	Medium LED Wall Pack	Bronze	375W HID	3000K-5000K	120-347V	5,000-10,000	40-75W	080083265183	S-9DIVKW

Note: DLC Premium items are noted in bold.

WPM Wall Pack Luminaire WALL MOUNT

- LED wall pack available with selectable configurations
- Die-cast aluminum housing with hinged, removable die-cast aluminum door
- Heat and impact resistant borosilicate glass lens
- Energy and maintenance savings up to 89%
- Ideal for pathway illumination, building entrances, vehicle ramps, schools, tunnels, stairways and loading docks



Catalog Number	Description	Finish	Replaces	Selectable CCT	Voltage	Selectable Lumens	Watts	UPC	DLC Product ID
WPMLED15S	Medium LED Wall Pack	Bronze	150W HID	3000K-5000K	120-347V	3,977-7,535	29-59	080083176144	PLAP4BWH9V52
WPMLED25S	Medium LED Wall Pack	Bronze	250W HID	3000K-5000K	120-347V	9,779-12,829	72-101	080083176168	PLCDOB65Z8EN

LSF Selectable Flood Luminaire FLOODLIGHT

- Available in 3 housing sizes and multiple lumen packages
- 3-colour selectable CCT: 3000K, 4000K, 5000K; 70CRI
- Lumen packages ranging from 1,700-20,000 lumens
- Knuckle, slipfitter, trunnion and yoke mounting types
- Integrated button type photocontrol for dusk-to-dawn operation



Catalog Number	Description	Finish	Replaces	Selectable CCT	Voltage	Selectable Lumens	Watts	UPC	DLC Product ID
LSF25-KN-PC	Knuckle Mount, Photocontrol	Bronze	155W HID	3000K-5000K	120-347V	1,700-4,000	11-25W	080083267705	S-W43YTM
LSF65-KN-PC	Knuckle Mount, Photocontrol	Bronze	375W HID	3000K-5000K	120-347V	5,000-10,000	25-65W	080083267729	S-5HK1XN
LSF120-SF-PC	Slipfitter Mount, Photocontrol	Bronze	450W HID	3000K-5000K	120-347V	9,000-20,000	50-120W	080083267743	S-M4YHAF
LSF25-YK-PC	Yoke Mount, Photocontrol	Bronze	155W HID	3000K-5000K	120-347V	1,700-4,000	11-25W	080083267767	S-W43YTM
LSF65-YK-PC	Yoke Mount, Photocontrol	Bronze	375W HID	3000K-5000K	120-347V	5,000-10,000	25-65W	080083267781	S-5HK1XN
LSF120-TR-PC	Trunnion Mount, Photocontrol	Bronze	450W HID	3000K-5000K	120-347V	9,000-20,000	50-120W	080083267804	S-M4YHAF

Note: DLC Premium items are noted in bold.

CLCS Canopy Luminaire CEILING MOUNT

- LED canopy available with fixed output or selectable configurations
- 3-colour selectable CCT: 3000K, 4000K, 5000K
- High-performance, energy-efficient illumination
- Energy and maintenance savings up to 86% versus HID solutions
- Ideal for new or existing spaces including bank, retail, drive-thru, covered sidewalks and hospital entryways



Selectable CCT & Lumens

Catalog Number	Description	Finish	Replaces	Selectable CCT	Voltage	Selectable Lumens	Watts	UPC	DLC Product ID
CLCS17S	Small LED Canopy	Bronze	175W HID	3000K-5000K	120-277V	5,323-7,939	39-56	080083160006	P5MUAJIY
CLCS40S	Large LED Canopy	Bronze	400W HID	3000K-5000K	120-277V	12,614-17,427	91-123	080083160020	PUT80LSK

LAS Luminaire AREA/SITE

- Automatic dusk-to-dawn area lighting with included twistlock photocontrol
- 10-position, Field-Selectable lumens across 2 die-cast aluminum housing sizes
- Energy and maintenance savings up to 79% versus HID solutions up to 79%
- Pole mount arm or adjustable slipfitter mounting arm included
- Ideal for parking lots, walkways, building areas and other outdoor areas



Catalog Number	Description	Finish	Replaces	CCT	Voltage	Selectable Lumens	Watts	UPC	DLC Product ID
LAS100P-T3	T3 Distr., Pole Mount Arm	Bronze	1,000W HID	4000K	120-277V	8,200-34,000	48-250	080083248780	PP8AW4F5
LAS100P-T3-HV	T3 Distr., Pole Mount Arm	Bronze	1,000W HID	4000K	347-480V	8,200-34,000	48-250	080083248841	PP8AW4F5
LAS100P-T4	T4 Distr., Pole Mount Arm	Bronze	1,000W HID	4000K	120-277V	8,200-34,000	48-250	080083248803	POCHU9AS
LAS100P-T4-HV	T4 Distr., Pole Mount Arm	Bronze	1,000W HID	4000K	347-480V	8,200-34,000	48-250	080083248865	POCHU9AS
LAS100P-T5	T5 Distr., Pole Mount Arm	Bronze	1,000W HID	4000K	120-277V	8,200-34,000	48-250	080083248827	PMUFIF4F
LAS100P-T5-HV	T5 Distr., Pole Mount Arm	Bronze	1,000W HID	4000K	347-480V	8,200-34,000	48-250	080083248889	PMUFIF4F
LAS100S-T3	T3 Distr., Adjustable Slipfitter Arm	Bronze	1,000W HID	4000K	120-277V	8,200-34,000	48-250	080083155866	PP8AW4F5
LAS100S-T3-HV	T3 Distr., Adjustable Slipfitter Arm	Bronze	1,000W HID	4000K	347-480V	8,200-34,000	48-250	080083155989	PP8AW4F5
LAS100S-T4	T4 Distr., Adjustable Slipfitter Arm	Bronze	1,000W HID	4000K	120-277V	8,200-34,000	48-250	080083155880	POCHU9AS
LAS100S-T4-HV	T4 Distr., Adjustable Slipfitter Arm	Bronze	1,000W HID	4000K	347-480V	8,200-34,000	48-250	080083156009	POCHU9AS
LAS100S-T5	T5 Distr., Adjustable Slipfitter Arm	Bronze	1,000W HID	4000K	120-277V	8,200-34,000	48-250	080083155903	PMUFIF4F
LAS100S-T5-HV	T5 Distr., Adjustable Slipfitter Arm	Bronze	1,000W HID	4000K	347-480V	8,200-34,000	48-250	080083156023	PMUFIF4F
LAS45P-T3	T3 Distr., Pole Mount Arm	Bronze	450W HID	4000K	120-277V	4,900-20,000	30-150	080083248360	P1T4HG08
LAS45P-T3-HV	T3 Distr., Pole Mount Arm	Bronze	450W HID	4000K	347-480V	4,900-20,000	30-150	080083248728	P1T4HG08
LAS45P-T4	T4 Distr., Pole Mount Arm	Bronze	450W HID	4000K	120-277V	4,900-20,000	30-150	080083248384	PJZTZ423
LAS45P-T4-HV	T4 Distr., Pole Mount Arm	Bronze	450W HID	4000K	347-480V	4,900-20,000	30-150	080083248384	PJZTZ423
LAS45P-T5	T5 Distr., Pole Mount Arm	Bronze	450W HID	4000K	120-277V	4,900-20,000	30-150	080083248704	PW39PQB3
LAS45P-T5-HV	T5 Distr., Pole Mount Arm	Bronze	450W HID	4000K	347-480V	4,900-20,000	30-150	080083248766	PW39PQB3
LAS45S-T3	T3 Distr., Adjustable Slipfitter Arm	Bronze	450W HID	4000K	120-277V	4,900-20,000	30-150	080083155804	P1T4HG08
LAS45S-T3-HV	T3 Distr., Adjustable Slipfitter Arm	Bronze	450W HID	4000K	347-480V	4,900-20,000	30-150	080083155927	P1T4HG08
LAS45S-T4	T4 Distr., Adjustable Slipfitter Arm	Bronze	450W HID	4000K	120-277V	4,900-20,000	30-150	080083155828	PJZTZ423
LAS45S-T4-HV	T4 Distr., Adjustable Slipfitter Arm	Bronze	450W HID	4000K	347-480V	4,900-20,000	30-150	080083155941	PJZTZ423
LAS45S-T5	T5 Distr., Adjustable Slipfitter Arm	Bronze	450W HID	4000K	120-277V	4,900-20,000	30-150	080083155842	PW39PQB3
LAS45S-T5-HV	T5 Distr., Adjustable Slipfitter Arm	Bronze	450W HID	4000K	347-480V	4,900-20,000	30-150	080083155965	PW39PQB3

Note: DLC Premium items are noted in bold.



LUMARK WALL MOUNTS

Lumark combines value-engineered, specification-grade lighting features with market-leading retrofit installation solutions, to enable contractors to get on and off the job quickly and deliver superior illumination coverage.



XTOR Crosstour Luminaire WALL MOUNT

- Architectural style with super bright, energy-efficient LEDs
- Low-profile, rugged die-cast aluminum construction and stainless steel hardware
- Universal back box with sealed and gasketed optical compartment
- Wall, surface, post, bollard, low-level, inverted, floodlight mounting
- Ideal for multi-use facilities, pathway illumination and building entrances



Catalog Number	Description	Finish	Replaces	CCT	Voltage	Lumens	Watts	UPC	DLC Product ID
XTOR1B	Small Full Cutoff	Carbon Bronze	70W HID	5000K	120-277V	1,418	12	080083777969	PRVAZAZR
XTOR2B	Small Full Cutoff	Carbon Bronze	100W HID	5000K	120-277V	2,135	18	080083778225	PGP4FYV3
XTOR3B	Small Full Cutoff	Carbon Bronze	150W HID	5000K	120-277V	2,751	26	080083778041	PWFZHYJH
XTOR3B-347V	Small Full Cutoff	Carbon Bronze	150W HID	5000K	347V	2,751	26	080083778386	PWFZHYJH
XTOR4B	Medium Full Cutoff	Carbon Bronze	250W HID	5000K	120-277V	4,269	38	080083778003	PUJ1NXGY
XTOR6B	Large Full Cutoff	Carbon Bronze	320W HID	5000K	120-277V	6,129	58	080083774807	X7BH39
XTOR6BRL	Large Refractive Lens	Carbon Bronze	320W HID	5000K	120-277V	6,225	58	080083774821	N/A
XTOR8B	Large Full Cutoff	Carbon Bronze	400W HID	5000K	120-277V	8,502	81	080083774814	P5557CRH
XTOR8BRL	Large Refractive Lens	Carbon Bronze	400W HID	5000K	120-277V	8635	81	080083774852	N/A
XTOR8BRL-347V	Large Refractive Lens	Carbon Bronze	400W HID	5000K	347V	8635	81	080083777068	N/A
XTOR12BRL	Large Refractive Lens	Carbon Bronze	450W HID	5000K	120-277V	13458	102	080083779581	PAEAG8NM
XTOR12BRL-347V	Large Refractive Lens	Carbon Bronze	450W HID	5000K	347V	13458	102	080083778201	PAEAG8NM

CTKR Caretaker Luminaire

AREA/SITE

- Rugged die-cast housing for durability in security applications
- Uniform distribution with excellent vertical illumination for maximum light coverage
- Wall/pole-mount bracket and integral slipfitter for versatility in mounting
- Versatile universal mounting plate allows quick and easy installation
- Low-cost, low-maintenance solution for residential street lighting, perimeter area lighting, parking areas, loading platforms, boat docks, access drives or pathways



Catalog Number	Description	Finish	Replaces	CCT	Voltage	Lumens	Watts	UPC	DLC Product ID
CTKR3B	Area site with PC, UNV Mount Arm	Raw	250W HID	4000K	120-277V	9,741	71	080083865413	P3P0FHML

Note: DLC Premium items are noted in bold.

Accessories

Catalog Number	Description	Finish	UPC
SR-CARETAKER	Small Acrylic Refractor	Clear	08008377969

NFFLD Night Falcon Luminaire

FLOODLIGHT

- Cost-effective LED floodlight available in medium or large sizes
- Precision engineered and high-efficiency optics delivers superior uniformity
- Compact, robust die-cast aluminum housing, driver compartment and door
- 6H x 6V NEMA wide distribution
- Ideal for area lighting for security, building facade and signage



Catalog Number	Description	Finish	Replaces	CCT	Voltage	Lumens	Watts	UPC
NFFLD-C25-T	Medium, Trunnion	Carbon Bronze	250W HID	4000K	120-277V	10,530	85	080083801220
NFFLD-C40-S	Medium, Slipfitter	Carbon Bronze	400W HID	4000K	120-277V	16,932	128	080083801206
NFFLD-C40-T	Medium, Trunnion	Carbon Bronze	400W HID	4000K	120-277V	16,932	128	080083801183
NFFLD-C40-T-347	Medium, Trunnion	Carbon Bronze	400W HID	4000K	347V	16,932	129	080083801060
NFFLD-L-C100-T	Large, Trunnion	Carbon Bronze	1,000W HID	4000K	120-277V	33,941	252	080083800902

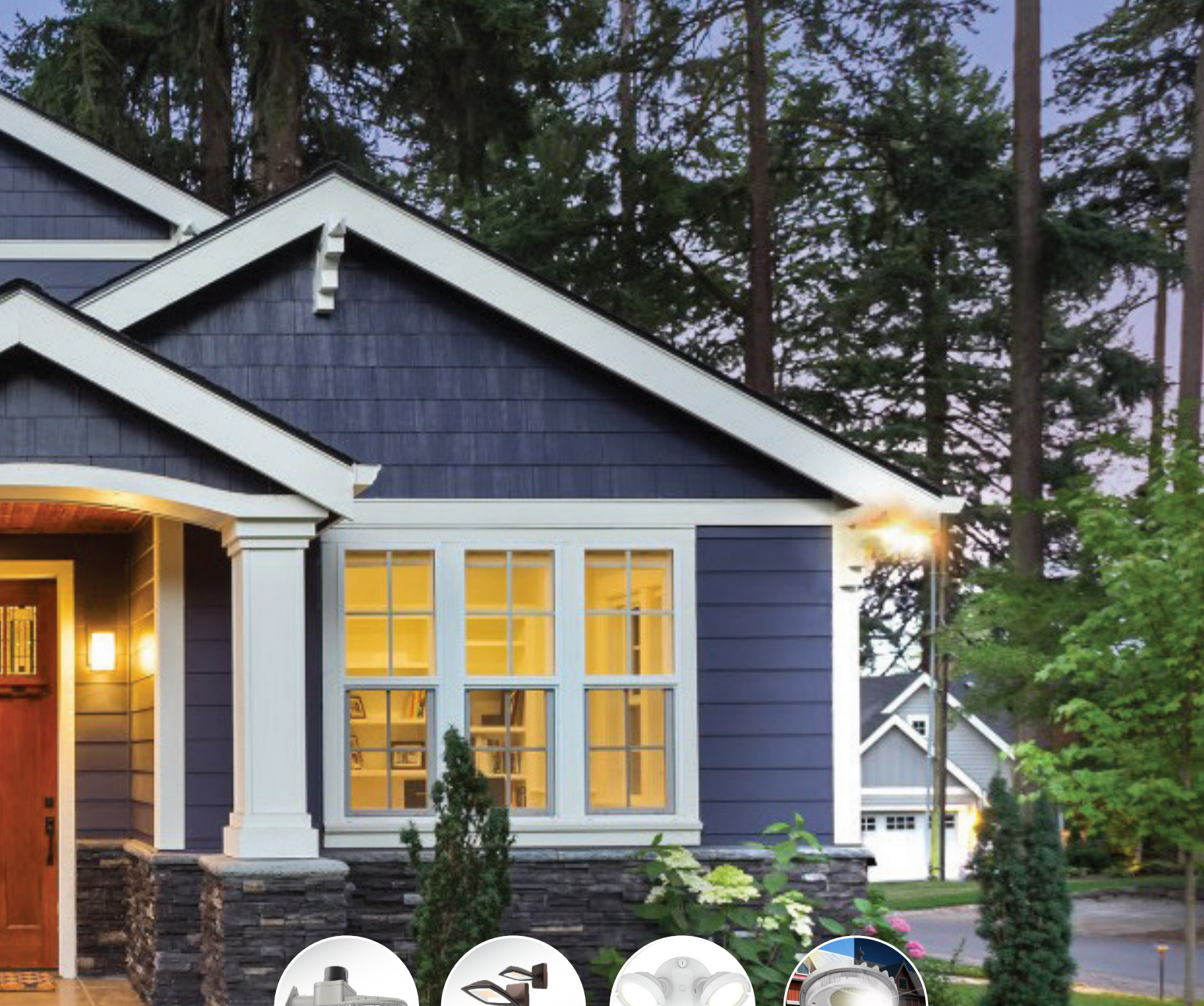
NHR Night Harrier FLOODLIGHT

- Cutting edge innovated design offering years of maintenance-free service
- 3-colour selectable CCT: 3000K, 4000K, 5000K
- Lumen packages ranging from 5,500-22,000 lumens
- Slipfitter and trunnion mounting types
- Ideal for area lighting such as facade, wall washing, building and sign lighting



Catalog Number	Description	Finish	Replaces	Selectable CCT	Voltage	Selectable Lumens	Watts	UPC	DLC Product ID
NHRS50UT	500W Trunnion Mount	Bronze	70W to 500W HID	3000K-5000K	120-277V	5,500-22,000	40-155W	080083283903	S-2FNDXP
NHRS50US	500W Slipfitter Mount	Bronze	70W to 500W HID	3000K-5000K	120-277V	5,500-22,000	40-155W	080083283910	S-2FNDXP
NHRS50HT	500W Trunnion Mount	Bronze	70W to 500W HID	3000K-5000K	347-480V	5,500-22,000	40-155W	080083283927	S-2FNDXP
NHRS50UT-BPC	500W Trunnion Mount, Photocontrol	Bronze	70W to 500W HID	3000K-5000K	120-277V	5,500-22,000	40-155W	080083283941	S-2FNDXP





Area/Site
p. 57



Slim Wall &
Floodlight
p. 57



Floodlight
p. 57



Solar
p. 58

HALO[®]

OUTDOOR LIGHTING

HALO Outdoor provides security and utility lighting for residential and light commercial applications.

TGS Series – Twin Head

SECURITY FLOODLIGHT

- Three different brightness levels using Lumen Select Technology
- Durable die-cast aluminum square head with UV resistant lens
- Easy install to wall or eave mounting, with integrated easy connector
- Switch activated, Dusk-to-Dawn, and motion activated models available
- Ideal for security lighting in residential and commercial applications



Dusk-To-Dawn models available



with sensor also available in square head

Catalog Number	Description	Finish	Replaces	CCT	Voltage	Lumens	Watts	UPC	Energy Star ID
TGS2S402MSRB	Twin Head LED Flood	Bronze	180W HID	4000K	120V	1,500-2,500	20.9	080083801220	2362292
TGS2S402MSRW	Twin Head LED Flood	White	180W HID	4000K	120V	1,500-2,500	20.9	080083801206	2362292

ALP - Premium Area Light

AREA/SITE

- All-in-1 brightness adjustable and colour selectable premium LED area light
- Includes 3 LED brightness settings using physical switch on the fixture
- Includes 3 light colour temperatures using physical switch on fixture housing
- Dusk to Dawn nighttime on daytime off operation with replaceable Photocell



Catalog Number	Description	Finish	Replaces	CCT	Voltage	Lumens	Watts	UPC	Energy Star ID
ALP90LSFSUNVDGY	Barn Light	Grey	250W HID	3000K-5000K	120-277V	4,450-9,300	28W/40W/60W	080083801220	S-JDR6ZI

ARFL Series

SLIMWALL AND FLOODLIGHT

- Modern slim flood light with decorative wall mount
- 5 selectable colour temperatures and photocell on/off with included remote control
- Nighttime on daytime off with photocontrol sensor or can be switch activated
- For illuminating areas such as driveways, backyards, garages, or signage.



Catalog Number	Description	Finish	Replaces	CCT	Voltage	Lumens	Watts	UPC	Energy Star ID
ARFL15DBZ	Slim Wall Flood	Bronze	100W HID	2700K-5000K	120V	1,500	15	080083260928	2404319
ARFL30DBZ	Slim Wall Flood	Bronze	200W HID	2700K-5000K	120V	3,000	30	080083260942	2404320
ARFL50DBZ	Slim Wall Flood	Bronze	250W HID	2700K-5000K	120V	5,000	45	080083260966	N/A
ARFL80DBZ	Slim Wall Flood	Bronze	150W HID	2700K-5000K	120V	9,000	80	080083260980	2404323

SBL Solar Area Light

AREA/SITE

- Off-Grid – completely free to operate, plus no expensive wiring required
- All-in-one design with LED, Solar Panel, and Battery built in for easy installation
- Motion sensor included with 120° detection range and 25' distance
- 3 selectable modes of operation with remote control Including Motion, Dusk-to-dawn, and Motion + Dusk-to-dawn
- Battery runs up to 90mins at maximum output on full charge and lasts up to 500 cycles



Catalog Number	Description	Finish	Replaces	CCT	Voltage	Lumens	Watts	UPC
SBL10A50GY	Motion, Dusk-to-Dawn	Grey	70W HID	5000K	Solar	1,000	7	080083260461
SBL30A50GY	Motion, Dusk-to-Dawn	Grey	100W HID	5000K	Solar	3,000	15	080083260508

SBL Solar Area Light

AREA/SITE

- Robust die-cast housing for harsh outdoor environments
- Integrated LED with traditional area light design
- Solar panel can be mounted two ways, on top of fixture, or remote mounted and can be mounted up to 25ft
- For illuminating areas such as driveways, backyards, garages, or signage.
- Three selectable modes of operation with remote control
- Premium PIR motion sensor with 180° detection range



Catalog Number	Description	Finish	Replaces	CCT	Voltage	Lumens	Watts	UPC
SBL100A50GY	High Output, Motion, Dusk-to-Dawn	Grey	250W HID	5000K	Solar	1,000	79.5	080083260546
SBL50A50GY	High Output, Motion, Dusk-to-Dawn	Grey	150W HID	5000K	Solar	5,000	33.5	080083260522

Halo Outdoor Accessories

Catalog Number	Description	UPC
EA24	SBL/ALP Mounting Arm	044427000717



Rapid Response

RAPID RESPONSE

The Rapid Response program is designed to offer the most popular Metalux commercial and industrial lighting products with options delivered to you when you need them.

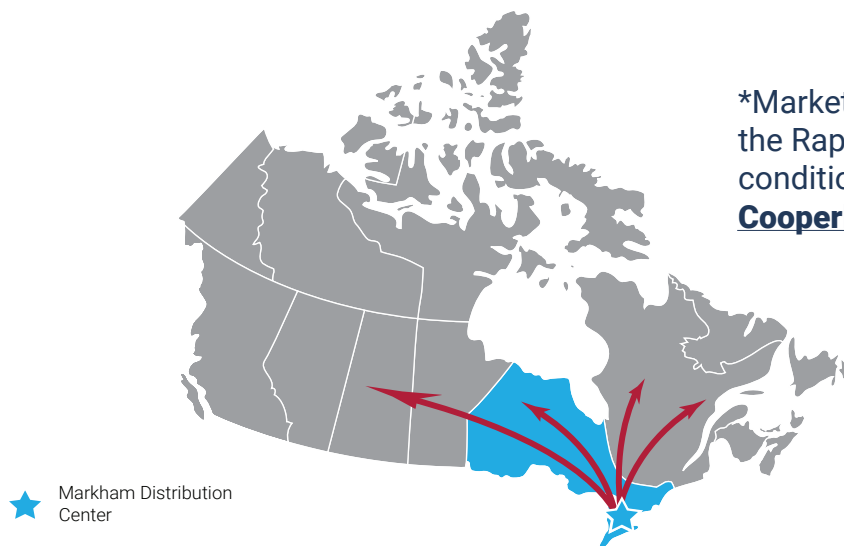
RAPID RESPONSE

Check out the site and find:

Customizable Metalux commercial and industrial products

Troffers, high bays and strips

Options include: sensors, battery packs, flex, modular wiring, 347V drivers



*MarketPro freight terms do not apply to the Rapid Response program. See terms, conditions and quantity limits at [Cooperlighting.com/MarketPro/Canada](https://www.cooperlighting.com/MarketPro/Canada)

★ Markham Distribution Center

The Rapid Response Program by Cooper Lighting Solutions was designed to keep key ambient, industrial and commercial lighting products flowing to your customers. With Rapid Response, completing projects has never been easier. Rapid Response provides flexibility through customizable options that makes ordering the most popular products simple. Combining easy-to-order modifications and quick-turnaround, Rapid Response allow you to deliver products faster, so projects are completed sooner.

Rules and Guidelines:

- Standard Cooper Lighting Solutions Terms and Conditions for MTO items apply
- Pre-approval required for custom build requests and orders exceeding 60 units
- 10-business day lead time will apply for all Rapid Response orders
- 10-business day window starts from initial acceptance of the order by Cooper in our FLASH order system
- If necessary, longer lead times will be appropriately communicated
- All orders are to be submitted with "QSC-" prefix
- HFR (Hold for Release) orders are not permissible
- Order scheduling to commence only upon receipt of order in our FLASH order system



Contact Patrick Millar for more information

Supply Chain Specialist

mobile: +1 647 278-2528

patrick.millar@cooperlighting.com

RAPID RESPONSE TROFFER | HIGH BAY

Cruze ST Recessed LED Luminaire Metalux

- Advanced optical control married with contemporary styling
- High performance efficacy greater than 135 lumens per watt
- Standard 0-10V continuous dimming driver
- Shallow depth housing (3.25")
- Latchless design and matte white architectural paint for clean look
- cULus damp location / IC Rated / RoHS compliant / DLC Qualified



SAMPLE NUMBER: QSC-22CZ2-39-UNV-EL7W-L835-CD1-U

RR Code	Rating	Series	LED Lumens Output		Shielding	
QSC =Quick Ship Canada	[Blank] = Standard	22CZ2 = 2' x 2' Cruze 24CZ2 = 2' x 4' Cruze	2' x 2' Standard Efficacy 20 = 2000 Lumens ^{(1),(2)} 24 = 2400 Lumens ^{(1),(2)} 32 = 3200 Lumens ⁽¹⁾ 39 = 3900 Lumens ⁽¹⁾ 44 = 4400 Lumens ⁽¹⁾	2' x 4' Standard Efficacy 30 = 3000 Lumens ⁽¹⁾ 35 = 3500 Lumens ⁽¹⁾ 40 = 4000 Lumens ⁽¹⁾ 45 = 4500 Lumens ⁽¹⁾ 50 = 5000 Lumens ⁽¹⁾ 55 = 5500 Lumens ⁽¹⁾ 60 = 6000 Lumens ⁽¹⁾ 65 = 6500 Lumens ⁽¹⁾	[Blank] = Ribbed Frosted Acrylic Lens (Standard) S = Smooth Frosted Acrylic Lens RDP = Smooth Lens with Round Pattern Insert SQR =Square Ribbed Frosted Acrylic Lens	
Voltage ⁽⁴⁾		CRI/CCT	Driver Type		Number of Drivers	Packaging
UNV = Universal Voltage 120-277 347V = 347 Volt ⁽⁵⁾		L835 = 3500K L840 = 4000K L850 = 5000K	CD = 0-10V Dimming Driver (10% - 100% Dimming) 5LTD = Fifth Light DALI Driver (5%-100% Dimming) ⁽²⁾ 5LTHD = Fifth Light Dimming Driver (1%-100% Dimming) ⁽²⁾		1 = 1 Driver 2 = 2 Drivers ⁽³⁾ (2' x 4' only)	U = Unit Pack
Options						
Emergency [Blank] = No Emergency EL7W = 7-watt, 120V-277V emergency battery pack installed ⁽⁶⁾ EL14W = 14-watt 120V-277V emergency battery pack installed ⁽⁶⁾			Flex [Blank] = No Flex A3/8-5/18G DIM = 3/8" cable, 3-wire, ground, dimming leads		Sensors [Blank] = No Sensor WPS (formerly WAA) = WaveLinX PRO Wireless Integrated Sensor ^(A) WLS (formerly WAB) = WaveLinX LITE Wireless Integrated Sensor	

NOTES: (1) White tuning not available with this model. (2) Products also available in non-US voltages and frequencies for international markets. (3) 347 versions 6000 lumens and below are available with emergency options, 5LTHD emergency battery pack (100 lm/W x 7=700 lumens). IES-format photometry for luminaire under emergency operation available. Battery option increases total height by 1 inch. (A) and step-dim options or sensors are not available. (6) With integral test switch/indicator/laser test. For approximate delivered lumens multiply the lumens per watt of the desired fixture by the wattage of the Consult WaveLinX system pages for additional details and compatibility. (B) Consult SVPD series system pages for additional details and compatibility. (C) Consult Fifth Light system pages for additional details and compatibility.

OHB LED High Bay Metalux

- Precision designed optical performance
- Offered in both standard and high efficacy versions
- High performance efficacy up to 210 lumens per watt
- Efficient 1-for-1 replacement of linear fluorescent & HID fixtures
- Lumen packages -18K, 24K, 30K
- Narrow, medium, and wide distribution



SAMPLE NUMBER: QSC- OHB-24SE-MFL-UNV-L840-CD-U
Includes V Hangers for rapid installation

RR Code	Series ⁽¹⁾	Lumen Packages / Standard Efficacy		Distribution / Shielding	Voltage ^{(3), (4), (5)}
QSC =Quick Ship Canada	OHB = Optimized High Bay	9SE = 9,000 Lumens 12SE = 12,000 Lumens 15SE = 15,000 Lumens 18SE = 18,000 Lumens	24SE = 24,000 Lumens 30SE = 30,000 Lumens 36SE = 36,000 Lumens	N = Narrow MFL = Medium Frosted MCL = Medium Clear W = Wide NL = No Lens ⁽²⁾	UNV = Universal Voltage 120-277V UNC = Universal Voltage 347/480
CCT/CRI		Driver Type	Options	Packaging	
L840 = 80CRI / 4000K L850 = 80CRI / 5000K		CD = 0- 10V Dimming Driver 5LTD = Fight Light DALI ⁽⁶⁾	MP = Modular Plug ⁽⁸⁾ Motion Sensors MS = 360° or 180° Motion Sensor Installed, (specify voltage) ^{(7),(8),(9)} OEFP010VMV =Occupancy Sensor with Integrated Photocell ^{(7),(8),(10)} WPS4 =WaveLinX PRO, Dimming Motion and Daylight, WAC Programmable, 15' - 40' Mounting ^{(7),(9),(11)} WLS4 =WaveLinX Lite Wireless Integrated Sensor, 15'–40' Mounting Height ^{(7),(9),(11)}	U = Unit Pack	

NOTES: (1) DesignLights Consortium® Qualified and classified for both DLC Standard and DLC Premium refer to www.designlights.org for details. (2) Voltage must be specified when ordering with plugs or emergency drivers. (3) When ordering sensor or EBP/TD option, specify as UNV (for 120V or 277V), 347V or 480V. (4) Ambient temperatures limited to 40C when using emergency, sensors, or 5LTD in conjunction with 347V or 480V. (5) Sensor or UNC not available in conjunction with 5LTD driver. (6) When ordering sensor or EBP/TD option, specify as UNV (for 120V or 277V), 347V or 480V. (7) When ordering sensor or EBP/TD option, specify as UNV (for 120V or 277V), 347V or 480V. (8) UNV and 347V only. (9) Sensor option not available for 36K lumen package with 347V or 480V. (10) Sensor option not available for 36K lumen package with 480V. (11) WaveLinX Lite devices are not currently compatible with the WaveLinX Pro Wireless Area Controller.

RAPID RESPONSE HIGH BAY | STRIP

VHB LED High Bay Series

Metalux

- Compact, lightweight design for ease of installation
- High Impact Polycarbonate optical lens
- 4 lumen packages available (12,000, 15,000, 18,000 and 24,000)
- High-Performance efficacy up to 133 lm/W
- Occupancy and daylight sensor for added savings
- Lumen Maintenance – L82 @ 60,000 hours



SAMPLE NUMBER: QSC-VHB-12-W-UNV-L840-CD1-U

RR Code	Series ⁽¹⁾	LED Lumen Output	Distribution	Shielding	Voltage ⁽²⁾	CCT
QSC =Quick Ship Canada	VHB = LED High Bay	9 =9,000 Lumens 12 =12,000 Lumens 15 =15,000 Lumens 18 =18,000 Lumens 24 =24,000 Lumens ⁽²⁾	N = Narrow (Aisle) W = Wide (General)	[Blank] = High Impact Polycarbonate Lens	UNV = Universal Voltage 120-277 UNC = Universal Voltage 347/480 ⁽²⁾	L840 = 4000K L850 = 5000K
Driver Type	Options	Motion Series			Packaging	
CD = 0-10V Dimming Driver SLTD = Fifth Light DALI (not available in 24,000 lumens)	MP = Modular Power Receptacle (used for all Cord or Cord and Plug options) ⁽⁴⁾	MS = 360° or 180° Motion Sensor Installed, (specify voltage) ^{(7),(8),(11)} OEFP010VMV =Occupancy Sensor with Integrated Photocell WLS4 = WaveLinX Lite Wireless Integrated Sensor 15'-40' Mounting Height ⁽¹²⁾ WPS4 =WaveLinX PRO, Dimming Motion and Daylight, WAC Programmable, 15' - 40' Mounting ⁽¹²⁾			U = Unit Pack	

NOTES: (1) DesignLights Consortium® Qualified and classified for both DLC Standard and DLC Premium refer to www.designlights.org for details. (2) Y-toggle mounting is required when installing the VHB 24K lumen combined with UNC, 347V, 480V, and a motion sensor. (3) Voltage must be specified when ordering accessory cord and plug. (4) Requires use of MC or MPC cord accessories. (5) When ordering MS, WLS4, or WLP4 option, specify as UNV (for 120 or 277V), or 347V, or 480V. (7) When ordering sensor, specify as UNV (for 120 or 277V), or 347V, or 480V. (8) Y-toggle mounting is required when installing the VHB 24K lumen combined with UNC, 347V, 480V, and a motion sensor. (10) UNV and 347V only. (11) Sensor option not available for 36K lumen package with 480V. (12) Sensor not available with 48K lumen package at UNC, 347V, or 480V.

SNX Series Base

Metalux

- Standard (SL) and High lumen/High Efficacy (HL) packages
- Three CCT and Lumen selectable options available
- Up to 22,000 lumen and 176 LPW
- 80 and 90CRI option for superior colour quality
- Standard with 0-10V dimming driver (10% standard, 1% optional)



SAMPLE NUMBER: 4SNX-48SL-UNV-L935-CD1-BLK-U

RR Code	Length	Series	Standard Nominal Lumen Packages ⁽⁴⁾	Voltage ⁽²⁾
QSC =Quick Ship Canada	2 = 2 ft. 4 = 4 ft. 8T = 8 ft.	SNX =Commercial LED Strip ⁽¹⁾	4 ft. Base SL3, 20SL, 22SL, 26SL, 31SL, 33SL, 37SL, 41SL, 45SL, 48SL, 51SL, 57SL, 60SL, 63SL, 67SL, 74HL, 81HL, 84HL, 87HL, 90HL, 93HL, 100HL, 104HL 8 ft. Base SL3, 40SL, 44SL, 52SL, 62SL, 66SL, 74SL, 82SL, 90SL, 96SL, 102SL ⁽⁵⁾ , 114SL ⁽⁵⁾ , 120SL ⁽⁵⁾ , 126SL ⁽⁵⁾ , 134SL ⁽⁵⁾ , 148HL ⁽⁵⁾ , 162HL ⁽⁵⁾ , 168HL ⁽⁵⁾ , 174HL ⁽⁵⁾ , 180HL ⁽⁵⁾ , 186HL ⁽⁵⁾ , 200HL ⁽⁵⁾	UNV = Universal Voltage 120-277 347 = 347V 480 = 480V ⁽³⁾
CRI/CCT	Options			
CCT Select ^{(19),(20)} CC83 =Switchable CCT, 80CRI, 35/4/5000K CC93 =Switchable CCT, 90CRI 35/4/5000K CCT/CRI L830 =3000K, 80 CRI L835 =3500K, 80 CRI L840 =4000K, 80 CRI L850 =5000K, 80 CRI L930 =3000K, 90 CRI L935 =3500K, 90 CRI L940 =4000K, 90 CRI L950 =5000K, 90 CRI	Emergency ^{(3),(6)} EL7W =7-watt 120V-277V emergency battery pack ⁽⁷⁾ EL10W =10-watt 120V-277V emergency battery pack ⁽⁷⁾ EL14W =14-watt 120V-277V emergency battery pack ⁽⁷⁾ EL10WSD =10W emergency battery pack with self-diagnostic installed ^{(7),(8)} EL14WSD =14W emergency battery pack with self-diagnostic installed ^{(7),(8)} Sensor Location MID =Mid-row ⁽¹⁶⁾			Wiring ^{(10),(11)} PI =Wiring Plug-in Option ⁽¹³⁾ CPI =Crossover Plug-in Option ⁽¹³⁾ PC6/120 =(NEMA 5-15P) 6 ft. Cord with NEMA Straight Plug PC6/277 =(NEMA L7-15P) 6 ft. Cord with NEMA Twist Plug C6(1) =1 Circuit, 6 ft. Cord no Plug C3(1) =1 Circuit, 3 ft. Cord no Plug Sensor ⁽⁶⁾ [Blank] =No Sensor WPS (formerly WAA) =WaveLinX PRO Wireless Integrated Sensor ^(A) WLS (formerly WAB) =WaveLinX LITE Wireless Integrated Sensor ^(B) WLS4 =WaveLinX LITE, Dimming Motion and Daylight, Bluetooth Programmable, 15' - 40' Mounting ^{(12),(18),(9)} WPS4 =WaveLinX PRO, Dimming Motion and Daylight, WAC Programmable, 15' - 40' Mounting ^(A)
Driver Type	Number of Drivers		Packaging	
CD =0-10V Dimming Driver (10%-100% Dimming) HCD =0-10V Dimming Driver (1%-100% Dimming) SLTD =Fifth Light (DALI) Driver ⁽¹⁵⁾	1 = 1 Driver 2 = 2 Drivers		U = Unit Pack	

RAPID RESPONSE STRIP

SNX Series Lensed Strip

Metalux

- Standard (SL) and High lumen/High Efficacy (HL) packages
- Three CCT and Lumen selectable options available
- Up to 22,000 lumen and 176 LPW
- Square, Round and Flat Lens
- Standard with 0-10V dimming driver (10% standard, 1% optional)



SAMPLE NUMBER: 4SNX-48SL-LN-UNV-L835-CD1-U

RR Code	Length	Series	Lens	Voltage ⁽⁴⁾	
QSC =Quick Ship Canada	2 = 2 ft. 4 = 4 ft. 8T = 8 ft.	SNX =Commercial LED Strip ⁽²⁾	Round LC = Clear Lens LN = Semi-Frost Lens - Narrow LW = Full Frost Lens - Wide Square SLW = Square / Frost Lens - Wide Flat FDL = Flat Frost / Diffuse Lens	UNV = Universal Voltage 120-277 347 = 347V 480 = 480V ⁽⁹⁾	
CRI/CCT					
CCT Select ^{(19), (20)} CC83 =Switchable CCT, 80CRI, 35/4/5000K CC93 =Switchable CCT, 90CRI 35/4/5000K CCT/CRI L830 =3000K, 80 CRI L835 =3500K, 80 CRI L840 =4000K, 80 CRI L850 =5000K, 80 CRI L930 =3000K, 90 CRI L935 =3500K, 90 CRI L940 =4000K, 90 CRI L950 =5000K, 90 CRI		Standard Nominal Lumen Packages ⁽³⁾ 4 ft. Round Lens SL3 ⁽²⁵⁾ , 20SL, 22SL, 26SL, 31SL, 33SL, 37SL, 41SL, 45SL, 48SL, 51SL, 57SL, 60SL, 63SL, 67SL, 74HL, 81HL, 84HL, 87HL, 90HL, 93HL, 100HL, 104HL 8 ft. Round Lens SL3 ⁽⁵⁾ , 40SL, 44SL, 52SL, 62SL, 66SL, 74SL, 82SL, 90SL, 96SL, 102SL ⁽⁵⁾ , 114SL ⁽⁵⁾ , 120SL ⁽⁵⁾ , 126SL ⁽⁵⁾ , 134SL ⁽⁵⁾ , 148HL ⁽⁵⁾ , 162HL ⁽⁵⁾ , 168HL ⁽⁵⁾ , 174HL ⁽⁵⁾ , 180HL ⁽⁵⁾ , 186HL ⁽⁵⁾ , 200HL ⁽⁵⁾			
Options		Driver Type ⁽¹⁴⁾	Number of Drivers	Packaging	
Emergency ^{(3), (6)} EL7W =7-watt 120V-277V emergency battery pack ⁽⁷⁾ EL10W =10-watt 120V-277V emergency battery pack ⁽⁷⁾ EL14W =14-watt 120V-277V emergency battery pack ⁽⁷⁾ EL10WSD =10W emergency battery pack with self-diagnostic installed ^{(7), (8)} EL14WSD =14W emergency battery pack with self-diagnostic installed ^{(7), (8)} GTR2 =Bodine Generator Transfer Relay ⁽⁹⁾ ETRD =Emergency Transfer Relay with dimming control ⁽⁹⁾ Sensor Location MID =Mid-row		Wiring ^{(10), (11)} PI =Wiring Plug-in Option ⁽¹³⁾ CPI =Crossover Plug-in Option ⁽¹³⁾ PC6/120 =(NEMA 5-15P) 6 ft. Cord with NEMA Straight Plug PC6/277 =(NEMA L7-15P) 6 ft. Cord with NEMA Twist Plug C6(1) =1 Circuit, 6 ft. Cord no Plug C3(1) =1 Circuit, 3 ft. Cord no Plug Sensor ⁽⁶⁾ [Blank] =No Sensor WPS (formerly WAA) ==WaveLinX PRO Wireless Sensor, Occupancy w/ photocell, Networked ⁽⁴⁾ WLS (formerly WAB) =WaveLinX LITE Wireless Sensor, Occupancy w/ photocell, Independent & Networked ⁽⁶⁾ WLS4 =WaveLinX LITE, Dimming Motion and Daylight, Bluetooth Programmable, 15' - 40' Mounting ^{(17), (18), (8)} WPS4 =WaveLinX PRO, Dimming Motion and Daylight, WAC Programmable, 15' - 40' Mounting ⁽⁴⁾	CD =0-10V Dimming Driver (10%-100% Dimming) HCD =0-10V Dimming Driver (1%-100% Dimming) 5LTD =Fifth Light (DALI) Driver ⁽¹⁵⁾	1 = 1 Driver 2 = 2 Drivers	U = Unit Pack

NOTES: (1) DesignLights Consortium® Qualified and classified for both DLC Standard and DLC Premium refer to www.designlights.org for details. (2) 347/480V max ambient temp 40C. (3) 4 ft and 8 ft only. (4) Nominal lumen values. See table for value and fixture length. (5) Requires two drivers. (6) When ordering sensor or EBP option, specify UNV (for 120 or 277V), 347 or 480V. (7) Factory installed with integral test switch/indicator/laser test. For approximate delivered lumens multiply the lumens per watt of the desired fixture by the wattage of the emergency battery pack (100 lm/W x 7=700 lumens). IES-format photometry for luminaire under emergency operation available. (8) EL10WSD and EL14WSD not available with 347V. (9) Used to bypass local control during outage. Must be used in conjunction with UL 1008 device (provided by others). GTR2 include 2 relays on fixtures with dimming drivers. ETRD option only requires one relay when used on a dimming fixture. Must specify voltage as 120 or 277V when ordering GTR2. (10) Consult tech support on numerous options for this feature. (11) Most common C&P shown. Must specify location for cord. All "end" locations will be on the end with sensor installed. (12) WLSx provided in separate enclosure. (13) For more information on PI/CPI options, refer to 022341_LI_tilw (cooperlighting.com). (14) 2ft with Sensor limited to CD and HCD drivers only. (15) For a complete listing of Fifth Light products, visit www.cooperlighting.com (16) Integral Mid-Row sensor does not apply for ZW-SVPD3. (17) WLSx provided in separate enclosure. (18) Not available in Mid-Row Configuration. (19) SL3 must be ordered in conjunction w/CCT Select. CC83 or 93 default setting is 4000K and Medium output. (20) Selectable Lumens or Selectable CCT not compatible with WaveLinX Sensor options.

Integrated options must be used in conjunction with the associated system and may not be compatible with other options or accessories. Please refer to the following: (A) Consult WaveLinX system pages for additional details and compatibility. (B) WaveLinX Lite devices are not currently compatible with the WaveLinX Wireless Area Controller. Consult WaveLinX Lite system pages for additional details and compatibility.

DREAM. EXPERIMENT. PLAN.

A more powerful way to design.

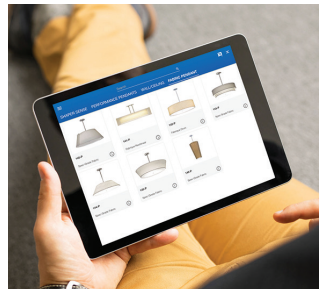
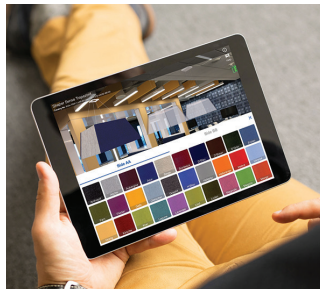


Light ARchitect™

► See your space in a new light with augmented reality

We've taken the guesswork out of lighting design with Light ARchitect, an augmented reality mobile app that lets you instantly visualize light fixtures in your space.

- Browse state-of-the-art light LED fixtures and choose the ones you want to see in your space
- Adjust the fixture's finish, lumen output, mounting height, colour temperature and more
- Virtually turn lights on to get the full effect
- Take screenshots to share and email to clients or colleagues



Light ARchitect is free and available for iOS and Android devices

Download **Light ARchitect**



To learn how Light ARchitect has changed our customers' way of working, visit cooperlighting.com/lightarchitect

Literature, product photography, videos, case studies, logos & more!

Visit Cooperlighting.com and click on the Resources tab. The Resource Center is a central location of supportive product selection tools, inspirational images and downloadable digital resources.

 Product Resources	 Inspiration	 Tools	 Programs	 Education
<ul style="list-style-type: none">• Brochures & Guides• Spec sheets• Installation sheets and guides	<ul style="list-style-type: none">• Application Photography• Product Photography & Videos• Case studies• Logos	<ul style="list-style-type: none">• Energy Incentive Finder• Photometric IES• Revit Models• Calculators & Audit Tools	<ul style="list-style-type: none">• MarketPro• Quick Spec• Overstock	<ul style="list-style-type: none">• Instructor-led Classes• Free online courses• Continuing education

Learn. Grow. Visualize.

Explore our one-stop-shop for Cooper Lighting Solutions digital tools.

Explore Our Video Library!

Visit Cooper Lighting Solutions' YouTube page to explore our ever-expanding product video library! Everything you need to know about our innovative product offering can be found here. Get the facts on newly introduced solutions, discover product benefits and watch videos on how to install them. Explore our curated playlists to easily find informative videos by industry-leading brand, market and product category.

youtube.com/cooperlightingsolutions



Lighting & Controls

STOCK PRODUCT GUIDE

LIGHTING BRANDS

Ametrix
AtLite
Corelite
Ephesus
Fail-Safe
HALO
HALO Commercial
Invue
iO
Iris
Lumark
LumarkAP
Lumière
McGraw-Edison
Metalux
MWS
NeoRay
Portfolio
PrentaLux - 3D Printed Lighting
RSA
Shaper
Streetworks

CONTROLS BRANDS

Greengate
Fifth Light
Intelligent Lighting Controls

CONNECTED LIGHTING SYSTEMS AND SMART SPACES PLATFORM

WaveLinx
Trellix Infrastructure



Cooper Lighting Solutions
1121 Highway 74 South
Peachtree City, GA 30269
P: 770-486-4800
www.cooperlighting.com

Canada Sales
5925 McLaughlin Road
Mississauga, Ontario L5R 1B8
P: 905-501-3000
F: 905-501-3172

© 2025 Cooper Lighting Solutions
All Rights Reserved
Printed in USA
Publication No. CA5250002
January 2025

Cooper Lighting Solutions is a registered trademark.

All other trademarks are property of their respective owners.

Product availability, specifications, and compliances are subject to change without notice.