

**PHILIPS**

DALI, potentiometer

UID8620



IP20

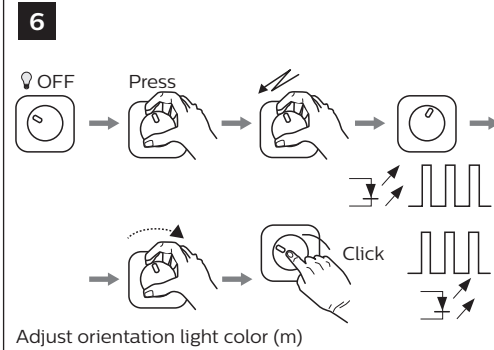
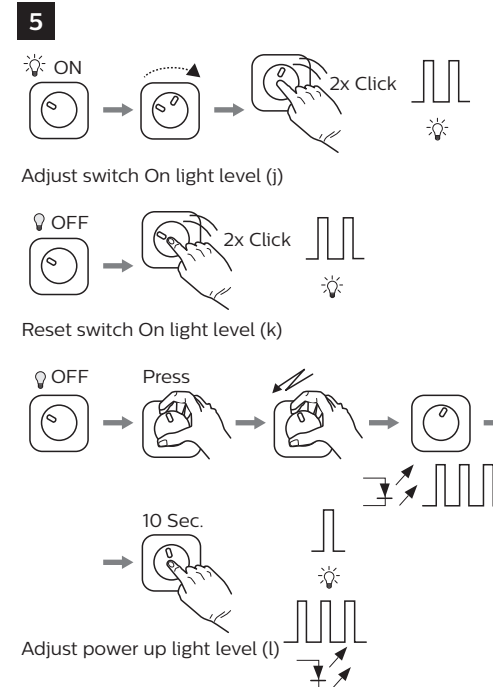
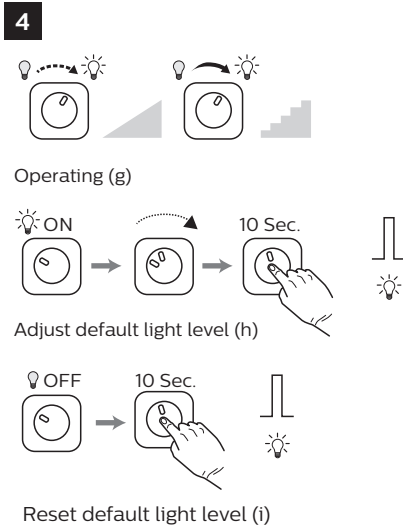
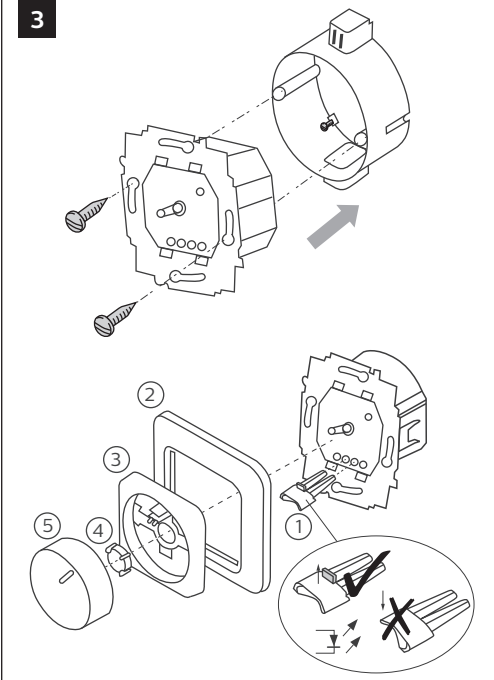
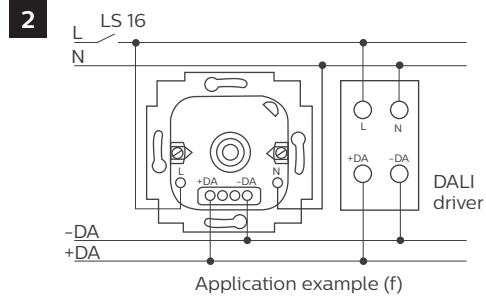
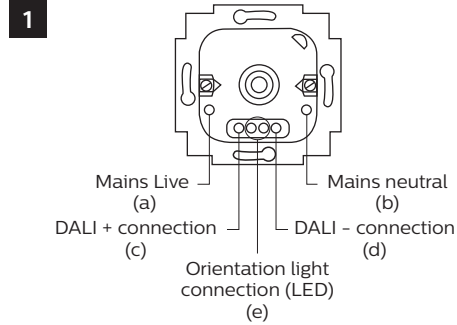
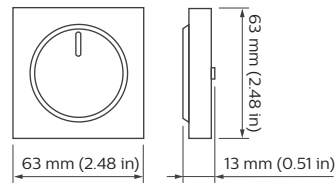
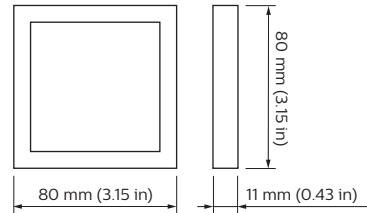
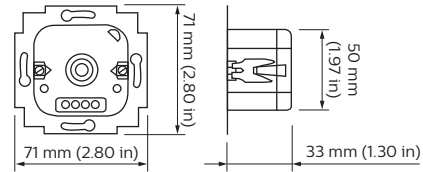
3222 636 43312  
4 February 2019

[www.philips.com/lighting](http://www.philips.com/lighting)



© 2019 Signify Holding. All rights reserved.  
Specifications are subject to change without notice.  
No representation or warranty as to the accuracy or completeness of the information included herein is given and any liability for any action in reliance thereon is disclaimed. Philips and the Philips Shield Emblem are registered trademarks of Koninklijke Philips N.V. All other trademarks are owned by Signify Holding or their respective owners.  
3222 636 43312

4 February 2019



**Technical data**

Supply	230 Vac ±10%, 50 to 60 Hz
Power consumption	≤ 2.5 W
DALI output voltage	15.5 Vdc
DALI output current	75 mA
Maximum DALI loads	37
Max. cable length in system	300 m